

A. B. C. & A. 1 Codes used.

Telegraphic Address, Latch, Haymills.

LATCH & BATCHELOR, Ltd.

AMALGAMATED WITH
WEBSTER & HORSFALL,
(ESTABLISHED 1730.)

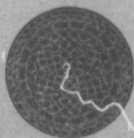
Works: **HAYMILLS, BIRMINGHAM, ENGLAND.**

AGENT: **H. M. WYLDE,** P O Box, 529 **HALIFAX N. S.**

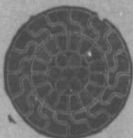
Patentees and Manufacturers of

Locked Coil and Flattened Strand **WIRE ROPES.**

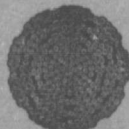
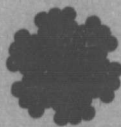
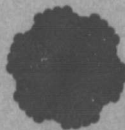
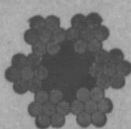
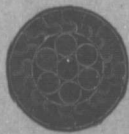
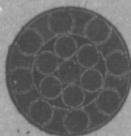
Manufacturers of all Kinds of **WIRE ROPES** for
**Mines, Tramways, Aerial Ropeways, Suspension
Bridges, Cranes, Elevators, Transmission of
Power, Steam Ploughing and General
Engineering Purposes.**



Locked Coil Winding Cable.



Locked Coil Aerial Cable or Colliery Guide.



Lang's Lay or Ordinary, Patent Flattened Strand Winding or Hauling, Patent Flattened Strand, (non spinning)

DRAWERS OF all Sections of **HIGH CLASS STEEL-WIRE.**

for Ropes, Springs, Pianos, Needles, Fish-Hooks
Binding Armatures and all other Purposes.