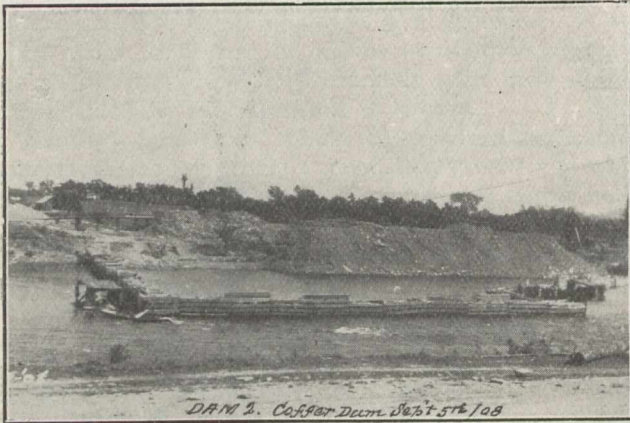


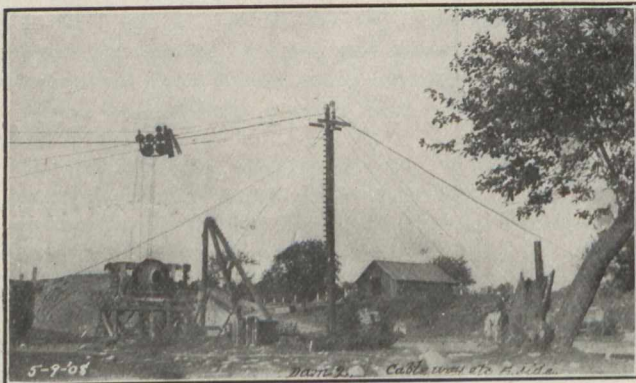
low the proposed top of dam, and the east bank about 8 feet below, very high masts to carry the cable where required in order to allow the buckets to clear the tops of piers when completed. The top of the east shore mast is 50 feet above the ground surface, and the west shore mast 48 feet,—the distance between them being 725 feet.

A 2-inch steel wire cable was used, and two single trap buckets of one cubic yard capacity, one bucket being filled at the mixer while the other was being run out to the work and back. A one cubic yard Smith mixer was used in connection with the cableway, and when everything was running smoothly, about 14 cubic yards per hour could be run out, the amount varying slightly with the length of the run, etc.



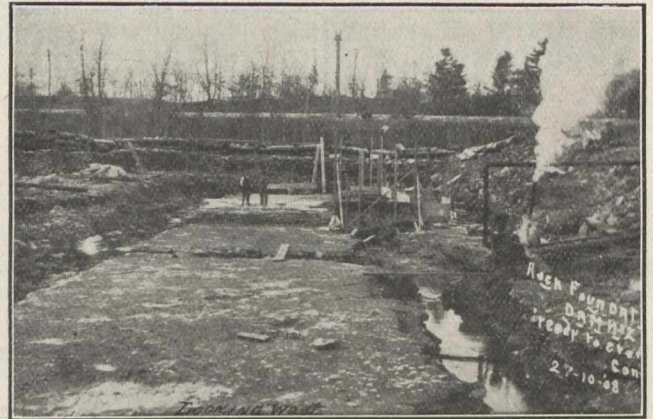
A considerable quantity of crushed stone having to be mixed with the gravel provided for this work, (the exact quantity having been ascertained by screening a large quantity of the gravel), to save extra handling and to ensure that the proper proportions of stone and gravel were used in each batch of concrete, an ingenious method was adopted by the contractors for the work, a description of which is as follows:—

On the east bank just north of the cableway, and convenient to the gravel pile, cement house, etc., an elevated platform was built. On opposite ends of this platform two



large triangular shaped bins were constructed, and immediately below, and connecting with the large bins by sheet iron doors, or traps, a smaller bin, divided into two compartments, was placed. These smaller bins were gauged to hold respectively, the quantity of stone, and gravel or sand, required for each batch of concrete, and at the top of each bin was an opening through which the necessary quantity of cement could be added. The small bins discharged directly into the mixer by means of sheet iron sliding doors in the bottom.

Just south of the platform directly under the cableway, a short length of track was laid, on which two flat trolleys were placed to receive the buckets and to run them under the mixer for loading. Along the west end of the elevated platform and about ten feet below it, an elevated plank roadway was constructed and a stone crusher erected underneath with its top, or feed, level with the roadway so that the stone could be hauled up and unloaded directly into the crusher, and as the stone was discharged from the crusher it dropped into a derrick box standing on a truck on a short length of track underneath. On the opposite side a large derrick was placed so that the radius of its boom intersected points at the



bins, the crusher, and the ends of two tracks connecting with the gravel, pile and cement house. By this means gravel, stone, and cement were handled by the derrick and placed in the receiving bins, or on the platform, as required, and no delay was caused by want of materials for mixing, as the receiving bins held sufficient material for several batches of concrete. The whole of this plant worked very smoothly and systematically, and was very creditable to the designer.

NEW INCORPORATIONS

Taber, Alta.—Belly River Collieries.

Calgary, Alta.—Richards Brothers Company.

Lethbridge, Alta.—Western Supply & Equipment Company. Simpson Company.

Ottawa.—Ottawa Piano Company, \$60,000; T. A. Chadburn, Montreal; E. C. Thornton, Woodstock; G. S. May, Ottawa.

Winnipeg, Man.—Rookery Building Syndicate, \$150,000; G. H. Walton, W. W. Blair, M. Hanlon. Prairie Elevator Company, \$100,000; R. Hume, Fort William; A. E. Choate, E. B. Eadie, Winnipeg.

British Columbia.—B. C. Oil and Coal Development Co., \$400,000. B. C. Rifle Association. Green Lake Mining & Milling Company, \$5,000,000. Hodgson Plumbing and Heating Company, \$25,000; Imperial Investment Company, \$25,000. J. C. Gibson Brokerage Company, \$25,000. Merritt Water, Light & Power Company, \$25,000. Olga Mines, \$1,000,000. Over-land Financiers, \$100,000.

Toronto.—Canada Slate Company, \$500,000; F. L. Hutchinson, A. N. Morgan, M. F. Pumaville, New Liskeard. Interlake Transit, \$100,000; E. S. Williams, T. A. Silverthorn, S. H. Bradford. Modern House Manufacturing Co., \$20,000; E. W. Nelles, J. L. Galloway, J. Cowan, jr. Atlas Mines, \$1,500,000; Misses G. B. Gilbank, M. Wilhelm, L. Walker. Willett Cobalt Mining Company, \$2,000,000; C. W. Mitchell, W. Kelly, J. A. Hopeson. Instant Company, \$50,000; M. C. Cameron, J. H. Spence, D. D. McLeod. Diamond Rubber Company, \$10,000; T. Weigle, H. E. Eandress, Akron, O.; N. E. Oliver, Buffalo. Canadian Train Control, \$500,000. W. H. Allison, C. R. Allison, F. Saunders. Dominion Cannery, \$10,000,000; G. P. Grant, G. W. MacDougall, L. Macfarlane.