

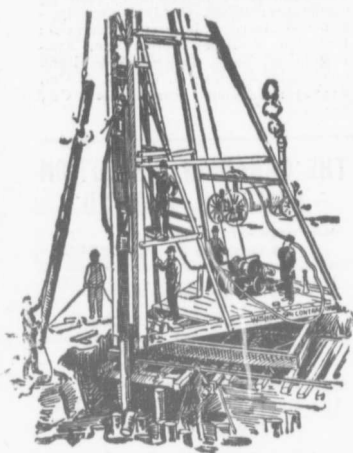
The Canadian Bridge Co., Limited

WALKERVILLE, ONT.

MANUFACTURERS OF

RAILWAY AND HIGHWAY BRIDGES

Locomotive Turn Tables,
Roofs, Steel Buildings and
Structural Iron Work of all descriptions



PILE DRIVING

on land or water by Steam Pile Drivers or Drop Hammers.

Portable Boilers
Hoisting Engines
Pumping Machinery

TO LET

Bridge Building, Trestle Work, Wharves,
Dams, Diving Submarine Work and
General Contracting.

WM. HOOD & SON

10 Richmond Sq. - MONTREAL

Surveying and Drawing Instruments

Best English Quality

Manufactured by

A. G. Thornton

Manchester, Eng.

Surveyors' and
Engineers' Supplies

Write Us For Catalogue
and Prices

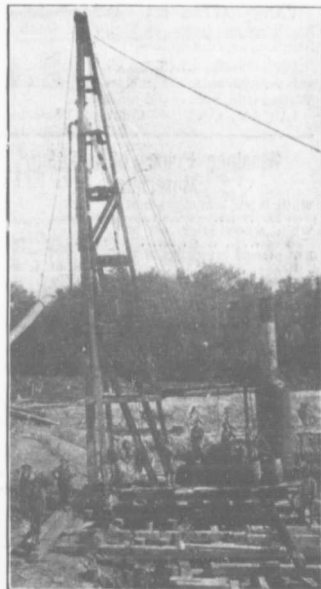
The

**C. H. MORTIMER
PUBLISHING CO.**

of Toronto, Limited

AGENTS FOR CANADA

Confederation Life Bldg., TORONTO
Alliance Building, MONTREAL



PILE DRIVING

and Foundation Work.

By 5-ton Automatic Steam Pile Hammer,
Water Jet or Drop Hammers, Dock Building,
Submarine Work and Dredging.

BUILDING MOVER AND WRECKER

General Contracting.

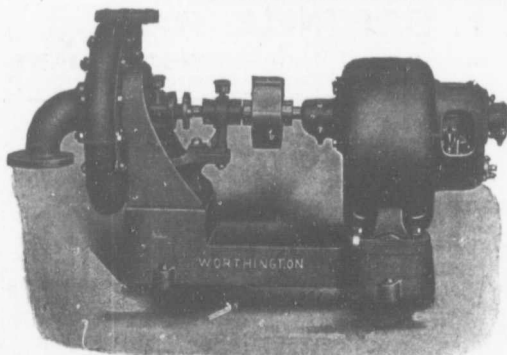
JNO. E. RUSSELL, - Toronto

908 Queen St. E. - Phone M. 2007.

If you want to reach Municipalities advertise in the
CONTRACT RECORD.

WORTHINGTON PUMPS

FOR WATER WORKS SERVICES



Worthington Volute Pump and Direct Current Motor.

"WORTHINGTON" TURBINE PUMPS

for heads up to 2,000 feet, are
Reliable, Durable, Efficient
and exceedingly simple

BOILERS, TANKS, FILTERS, ETC., ETC.

If you are interested in Pumps and Receivers
for Low Pressure Heating Systems, write for particulars and prices.

The John McDougall Caledonian Iron Works Co.,

Montreal.

Limited.