

A NEW PAVING BLOCK PLANT.

At Walkerville, Ont., is situated the works of the Ontario Asphalt Block Company, who are now turning out large quantities of asphalt paving blocks. The finished block is a composition of Trinidad asphalt, crushed conglomerate rock from Lake Superior and limestone pulverized to a fine cement.

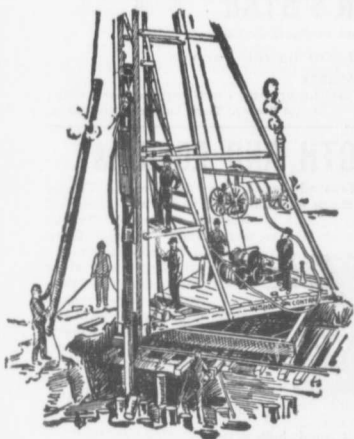
The machines for making the blocks give a pressure of 1250 pounds to the

square inch. The moulding press, which weighs 35 tons, gives 180 tons pressure to each block. The works when running full capacity can turn out twelve thousand blocks per diem. They are now engaged on a large order for Toronto. These blocks are 1 foot in length, 5 inches in width and 3 inches in thickness.

In the works are massive automatic weighing machines weighing out the asphalt and rock in exact proportions,

dumping it into the block pressing machine. The refining tanks hold 30 tons of boiling asphalt. A large Kent ball pulverizing mill is used for crushing rock. The railway tracks and a wharf on the company's premises give them excellent shipping facilities.

The stone, as it comes from the quarry, is first crushed, then rolled and screened till partially pulverized, then heated to a high degree of temperature, mixed with a

**PILE DRIVING**

on land or water by Steam Pile Drivers or Drop Hammers.

**Portable Boilers
Hoisting Engines
Pumping Machinery**

TO LET

Bridge Building, Trestle Work, Wharves, Dams, Diving Submarine Work and General Contracting.

WM. HOOD & SON

10 Richmond Sq. - MONTREAL

DEBENTURES

Municipalities contemplating the issue of Debentures will find it to their advantage to communicate with

G. A. STIMSON & CO.

Investment Dealers

24 and 26 King St. W. - TORONTO

**THE DELANO-OSBORN
ENGINEERING CO., LIMITED**

MANNING CHAMBERS, TORONTO

**CONSULTING CIVIL, MECHANICAL AND
ELECTRICAL ENGINEERS.**

**Pittsburgh Testing Laboratory,
LIMITED**

*Inspecting and Metallurgical
Engineers and Chemists*

SPECIALTIES: Inspection of RAILS and all material for BRIDGES, BUILDINGS, and other structures, cast iron pipe, wood and steel railroad cars.

MANUFACTURE AND ERECTION. Expert examination and reports, chemical analyses and physical tests of all kinds, Cement Testing.

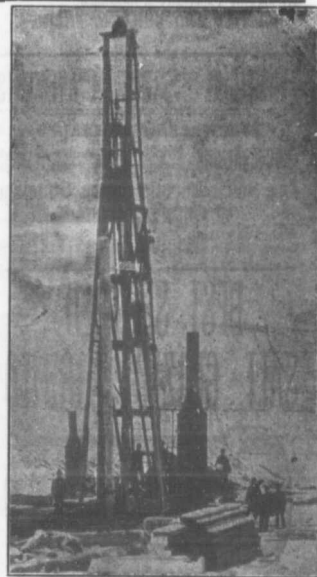
146 St. James Street, - Montreal, P.Q.

ALFRED J. STEVENS

Temple Building, TORONTO.

**Engines, Steel Plate Fans,
Conveying Machinery,
Rock Crushers.**

Please mention this paper when corresponding with advertisers.

**PILE DRIVING**

and Foundation Work.

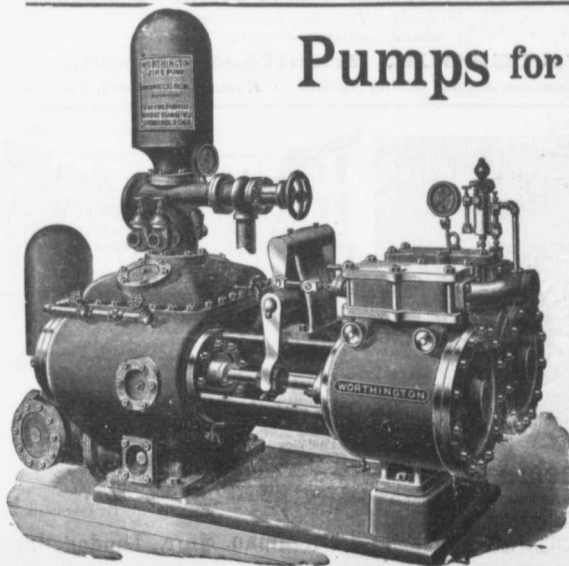
By 5-ton Automatic Steam Pile Hammer, Water Jet or Drop Hammers, Dock Building, Submarine Work and Dredging.

BUILDING MOVER AND WRECKER

General Contracting.

JNO. E. RUSSELL, - Toronto

908 Queen St. E. - Phone M. 207.

**Pumps for Waterworks**

**Waterworks Systems
Installed**

*Steam, Hydraulic, Electric,
Gasoline, Air Lift and
Automatic Rams.*

**Steam Boilers and
Filters**

Write for Prices and Particulars.

The John McDougall

CALEDONIAN IRON WORKS CO., LIMITED

MONTREAL, P.Q.