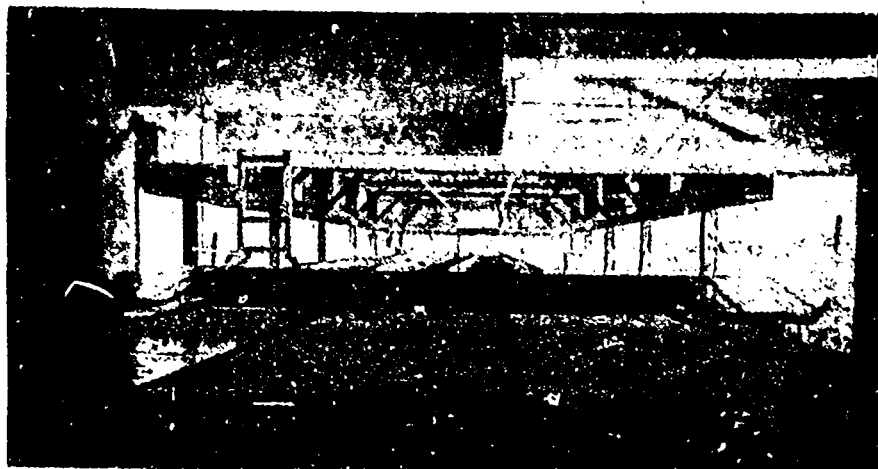




THE SORTING SHED.



INSIDE OF SORTING SHED.

to regular yard grades and handled automatically by the most modern sorting appliances. The location of the plant furnishes exceptional facilities for prompt distribution of lumber. By vessel the chief lumber distributing centres at the head of Lake Erie can be reached in twelve hours. By rail there are five lines of outlet, including a chief trunk line from Chicago to Buffalo, with branches that cover all parts of Michigan and Canada. As a matter of fact, Sarnia is the centre of the largest white pine consuming territory in the United States and Canada. The quick delivery possibilities of this plant will be a great factor in securing a very large share of the rush order business of the country in white pine lumber. It is also an exceptional plant in the particular that it can promptly furnish white pine timber bills. This assures the company an extensive trade throughout the Central and Eastern States and Ontario.

The company have some 400 men at work in their camps in Foster township, where they are putting in the present winter some twenty-five million feet of tree lengths pine.

The company have just erected a derrick and belt house at Sarnia, and are sinking two salt wells, it being the intention to erect what will be the largest salt plant in Canada.

PERSONNEL OF THE COMPANY.

The president of this extensive organization is Mr. L. Dean Holden, who is also its treasurer. Mr. Holden is interested in many other important commercial enterprises, and is well versed in the lumber business. His brother,

Mr. L. B. Beider is assistant secretary and Mr. E. C. Barre general superintendent. Mr. Frank Coleman, formerly saw mill superintendent of the Cleveland plant, and for twenty years with the Mitchell & Rowland Lumber Company, of Toledo, will occupy a like position with the new company, and will be backed by able assistants in the various departments of the business.



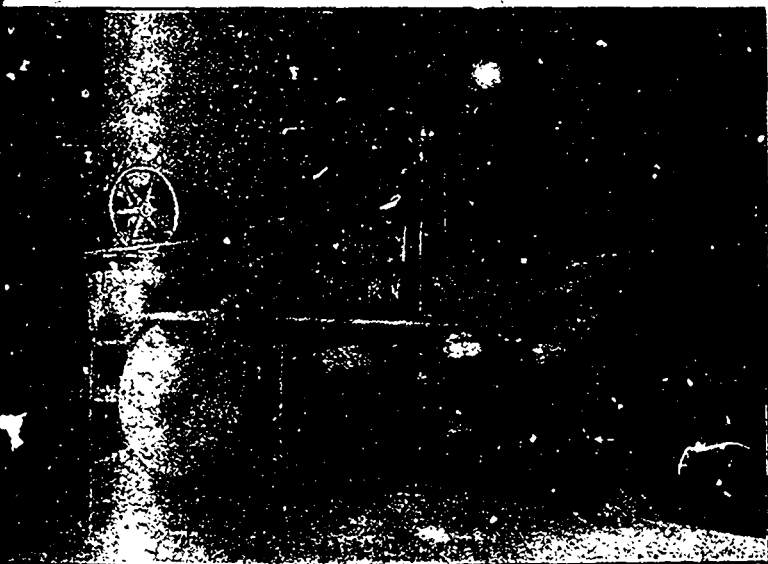
PART OF THE POWER HOUSE.

Mr. A. F. Holden, is vice-president of the company. He is also a man of large business experience, although only recently associating himself with the lumber trade. The secretary and general manager of the concern is Mr. J. M. Diver, to whom is due the splendid arrangement and equipment of the Sarnia plant.

LUMBERING OPERATIONS IN SWEDEN.

A royal commission, which was appointed to investigate the depopulation of Northern Sweden through the operations of great lumber companies, has made a report in favor of the immediate introduction of a bill prohibiting sales of forest lands in the Provinces of Norland and Dalecarlia to lumber companies until 1905. The commission finds that the peasantry in those provinces is in danger of extinction, the lumber companies laying waste farms and nursing only the forests.

The evils thus brought about are so great that immediate temporary measures are demanded. The commission suggests that after 1905 final legislation be adopted regulating the operations of lumber companies and based on the detailed investigations of the commission.



24 x 42 CORLISS ENGINE.



FILING ROOM.

VIEWS OF THE PLANT OF THE CLEVELAND-SARNIA SAW MILLS COMPANY, LIMITED, SARNIA, ONT.