

MAIN ENTRANCE HALL, HUNTER BUILDING, OTTAWA, ONT.

offices throughout. Ample provision has also been made for fire escape stairs inside the building, running from the basement to the roof; also for two stand pipes with hose attachment on each floor. The general equipment, including the various staff lavatories, is modern and sanitary in character, and a vacuum cleaning system is installed for cleaning the offices, corridors and halls. Steam is employed to heat the structure, a vacuum steam-heating plant being utilized for this purpose. The ventilation is ac-

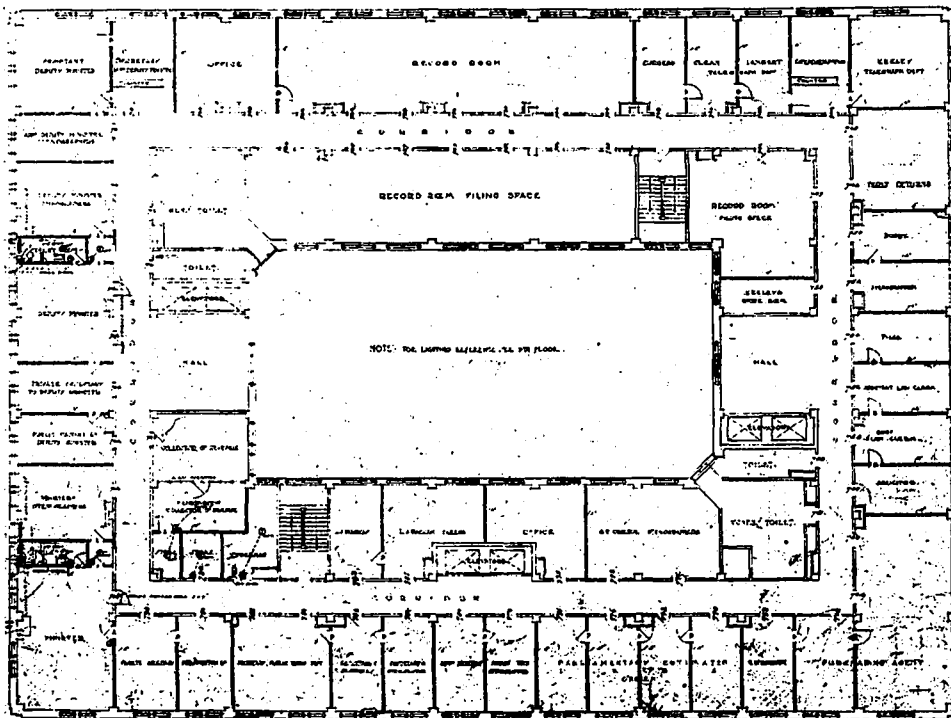
This building will consist of a large central portion with tower containing main entrance hall with marble staircase leading to upper floors and marble staircase leading to upper floors and basement. The east and west extensions provide class-rooms, lecture rooms and administration offices. The northern annex contains a large assembly room with galleries and machinery hall in the basement for applied science.

At present there is only being erected the central portion (without the tower), the west wing and the assembly room annex.

The drawings and specifications were also prepared by the Chief Architect's staff of the Public Works Department, Ottawa, and the construction is being supervised locally by a representative of this staff. The contractors are Pigott and Healy.

The building is fireproof throughout, the outer walls being constructed of limestone and floors of reinforced concrete, the roof of steel covered with concrete and asbestos slates. The halls, corridors, wash-rooms, etc., are finished in terrazzo with marble borders.

Mechanical ventilation



SEVENTH FLOOR PLAN, HUNTER BUILDING, OTTAWA, ONT.