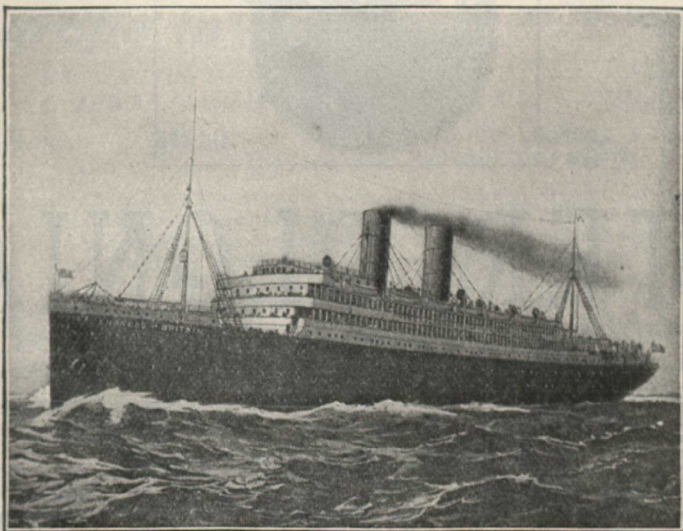


# The "Empresses"

Canadian Pacific Railway Company's  
Royal Mail Steamships

F  
I  
N  
E  
S  
T



EMPERESS OF BRITAIN

F  
A  
S  
T  
E  
S  
T

## Excel in Comfort, Luxury, Speed and Steadiness

**They are the finest and fastest** floating hotels on the Atlantic service. Wireless Telegraphy, Deep Sea Telephones, New Thermo. Heating Process, Ten Watertight Compartments, Deep "V" Shaped Bilge Keels—to promote steadiness at sea, and many other improvements. Length 570 feet, Breadth 67 feet, Horse Power 18,000, Tonnage 14,500, with extensive covered in or open Promenade Deck Space.

**The Dining Saloon** is 58 feet long, full width of ship, and seats over 300 persons. It is panelled in mahogany, decorated in white enamel with carving in a rich dull gold—the seats are upholstered in crimson leather.

**The Music Room, Smoke Room, Library and Cafe** are all sumptuously and luxuriously arranged and furnished. Comfort is so blended with luxury and beauty to make these the ideal means of crossing the ocean.

**RATES OF PASSAGE** { First Cabin from \$80 to \$500.00 according to location.  
Second Cabin from \$45 to \$47.50 according to location.

**Tickets at any Steamship or Railway Agent in Canada and the United States**

The Empresses sail from St. John, N.B. (West St. John), on Fridays, after the arrival of C.P.R. train No. 9 from Montreal, at 7.25 p.m. on Thursdays. As they only touch at Halifax for mails, which are put on board by tender, passengers with luggage must board ship at St. John. Other Ships sail from St. John and do not touch at Halifax.