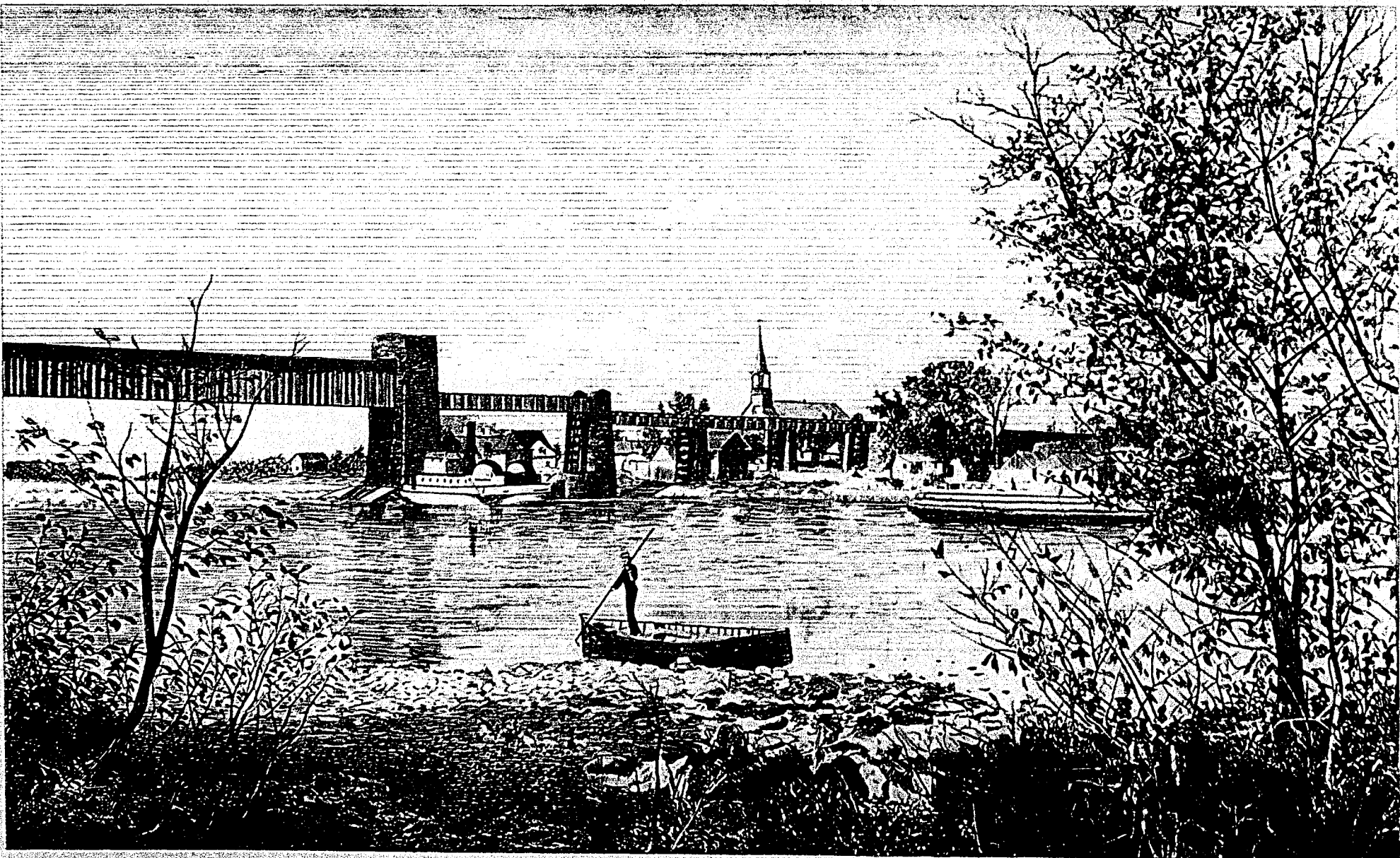


MONTREAL:—THE RAILWAY AND HARBOUR IMBROGLIO.—VIEW OF THE NEW ENGINE OF THE QUEBEC, MONTREAL, AND OCCIDENTAL RAILWAY, STANDING ON THE GRAND TRUNK RAILS, OPPOSITE ST. MARY'S CURRENT.



THE GRAND TRUNK RAILWAY BRIDGE AT ST. ANN'S, ISLAND OF MONTREAL.—FROM A PHOTOGRAPH BY HENDERSON.