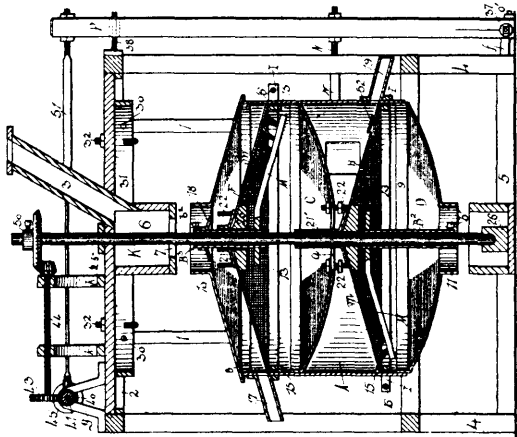


2nd. The combination with a suspended casing, of mechanism to alternately rotate said casing in opposite directions. 3rd. The com-



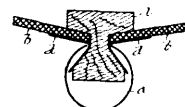
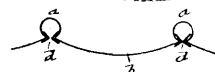
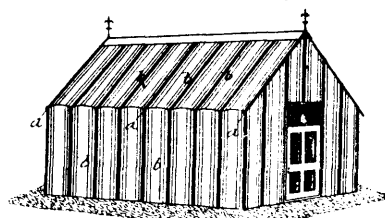
ination with a suitable support of hangers adjustable depending from said support, and a casing removably secured to said hangers. 4th. The combination with a suitable support, of a plurality of hangers adjustable depending from said support, a casing removably secured to said hangers, and mechanism to alternately partly rotate said casing in opposite directions so as to impart an intermittent alternate rotary movement about its axis, and simultaneously a pendulum movement about its axis. 5th. The combination with a supporting ring, of a plurality of hangers fixed to and depending from said ring, and a clamping ring at the lower end of said hangers. 6th. The combination with a suitable ring, of mechanism to adjustably secure said ring to a suitable support, a plurality of hanger fixed to and depending from said ring, brackets at the lower ends of said hangers, and superposed clamping rings secured to said brackets. 7th. The combination with a suitable support, of a frame adjustably secured to said support, a plurality of hangers fixed to and depending from said frame, a clamping ring fixed to said hangers, and a casing held suspended by means of said clamping ring, substantially as and for the purpose set forth. 8th. The combination with a casing, of a sieve within said casing, and a clamping ring upon the exterior of said casing to bind said casing upon said sieve. 9th. The combination with a casing, of a sieve held and positioned within said casing, rods secured to said sieve and extending outward, and screws so that these sieve connected rods may be raised or lowered in crowning the sieve. 10th. The combination with a plurality of adjustably supported hangers, of a casing supported by and secured to said hangers, a sieve within said casing, mechanism to partially rotate said casing in opposite directions about its axis, said hangers imparting a raising and falling movement to said casing about its own axis a shaft passing through said casing and supported independently of said casing, and a brush adjustably secured to said shaft and working said sieve. 11th. The combination with a suitable support, of a frame adjustably held by said support, hangers depending from and secured to said frame, a casing suspended and adjustably secured to said hangers, mechanism to partially rotate said casing in opposite directions about its own axis, a sieve within said casing, a shaft independently supported and passing through said casing, means to rotate said shaft, and a bush adjustably secured to said shaft and working against said sieve in such a manner that said rotating brush is intermittently carried against said sieve with a variable impact. 12th. In a middlings purifier, the combination of a sieve casing, of mechanism to oscillate said sieve about its centre. 13th. The combination with a suitable supporting structure, of a frame adjustably secured to said structure, hangers secured to and depending from said frame, a casing secured to and suspended from said hangers, a sieve within said casing, an intake within said casing above said sieve, an escape spout extending from said casing in line with said sieve, mechanism to partially rotate said suspended casing in opposite directions, all arranged substantially as and for the purpose set forth. 14th. The combination with a suspended casing, of mechanism to oscillate said casing about its axis. 15th. The combination with a suspended casing, of a hanger supporting said casing, said hanger permitting a pendulum movement of said casing, and mechanism to alternately rotate said casing in opposite directions.

No. 60,459. Method of Constructing Floors, Walls, etc. (*Méthode de construire des planchers, murs, etc.*)

Edward Lloyd Pease, Hurworth-on-Tees, Durham, England. 27th June, 1898; 6 years. (Filed 25th May, 1898.)

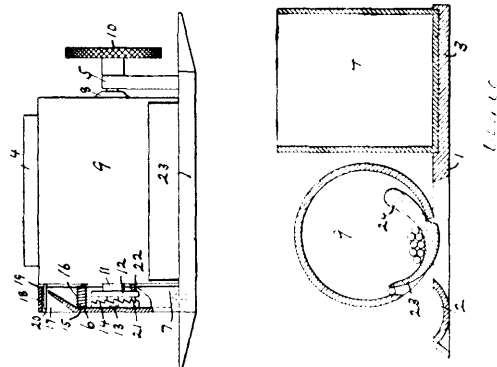
Claims.—1st. A construction of roofs, walls, tanks or the like, structural parts or structures characterized by a series of open tubular vessels of the forms illustrated in the drawings hereto annexed, or their equivalents interlocked with intervening sheets of iron or other strain-resisting material, including canvas, the interlocking being effected by inset flanges or by detachable angle strips

threaded into the open tubular vessels with or without the use of distance blocks or distance pieces or their equivalents, substantially



as and for the purpose as hereinbefore described and illustrated by way of example in the accompanying drawings. 2nd. A construction of roofs, walls, tanks or the like structural parts in which outer sheets of iron, wood or strain-resisting material, whether curved or flat, are interlocked with tubular vessels or their equivalents, in combination with canvas lining in the form of a double wall, substantially as hereinbefore described and illustrated.

No. 60,460. Match Box. (*Boîte à allumettes.*)



William Henry Hooker, Belleville, New Jersey, U.S.A., 27th June, 1898; 6 years. (Filed 6th June, 1898.)

Claims.—1st. An improved match safe, comprising a rotary cylinder having an opening in its wall, one edge of which opening forms a shoulder, and a segmental jaw fulcrumed in said opening and provided with a shoulder adapted to bear against the shoulder edge of the latter, said jaw having a weighted end in rear of its fulcrum and a lip at its front end adapted to bear with relation to the front edge of the cylinder opening, substantially as shown and described. 2nd. An improved match safe embodying a revolving cylinder adapted to deliver one match at a time, a base having uprights supporting said cylinder and a receptacle attached to said base, substantially as shown and described. 3rd. An improved match safe embodying a revolving cylinder adapted to deliver one match at a time, means for preventing the rearward rotation of the cylinder and a receptacle attached to the base supporting said cylinder, substantially as shown and described. 4th. An improved match safe embodying a revolving cylinder adapted to deliver one match at a time, supports therefor, a ratchet adapted to prevent the rearward rotation of the cylinder and means carried by said cylinder for cutting cigar tips, substantially as shown and described. 5th. An improved match safe embodying a revolving cylinder, supports therefor means for retarding the action thereof, a knife, a blade carried by said cylinder adapted to cut the ends of the tips of cigars, and a receptacle for ashes or burnt matches, said receptacle being removably attached to the base supporting said cylinder, substantially as shown and described. 6th. An improved match safe, embodying a revolving cylinder, a ratchet carried thereby, a spring bearing upon said cylinder, a knife blade carried by said cylinder and acting in conjunction with a suitable hole in one of the supports for said cylinder, and a receptacle attached to the base supporting said cylinder, substantially as shown and described.