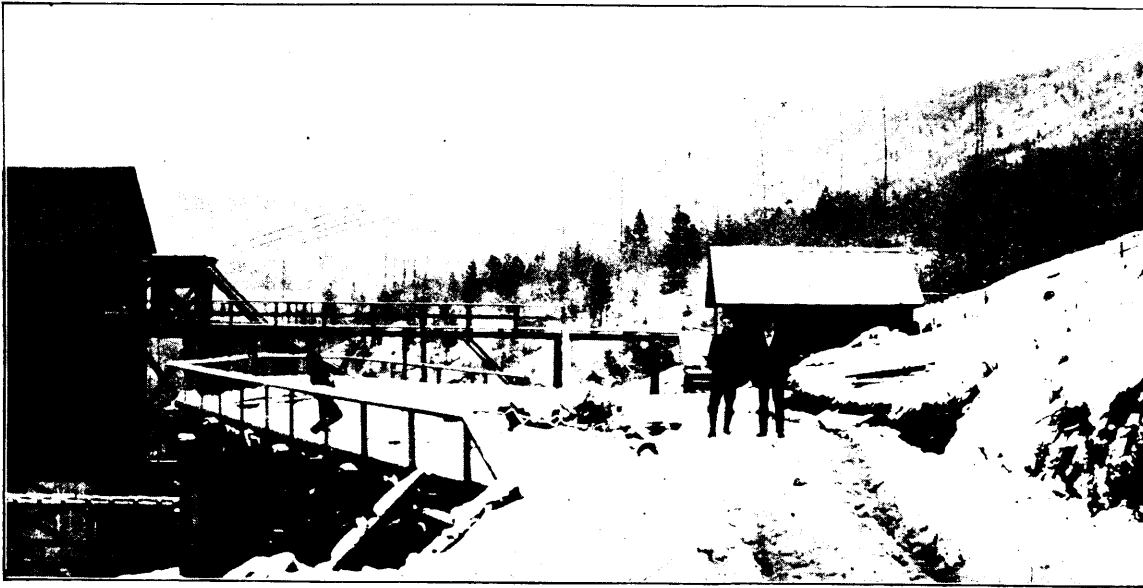


One Man Can handle 1600 TONS per day with a Riblet Patent Automatic Aerial Tramway



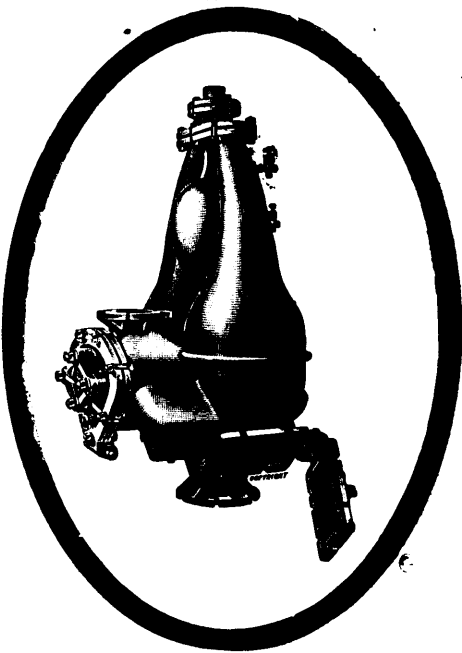
YOU CAN FIGURE
THE COST PER TON

More Riblet Tramways are now being
installed than of all the other
systems combined

WRITE FOR DESCRIPTION
AND PRICES

B. C. RIBLET, ENGR.

Spokane, Wash., U.S.A.
Nelson, B.C., Canada



A Thing to Remember!

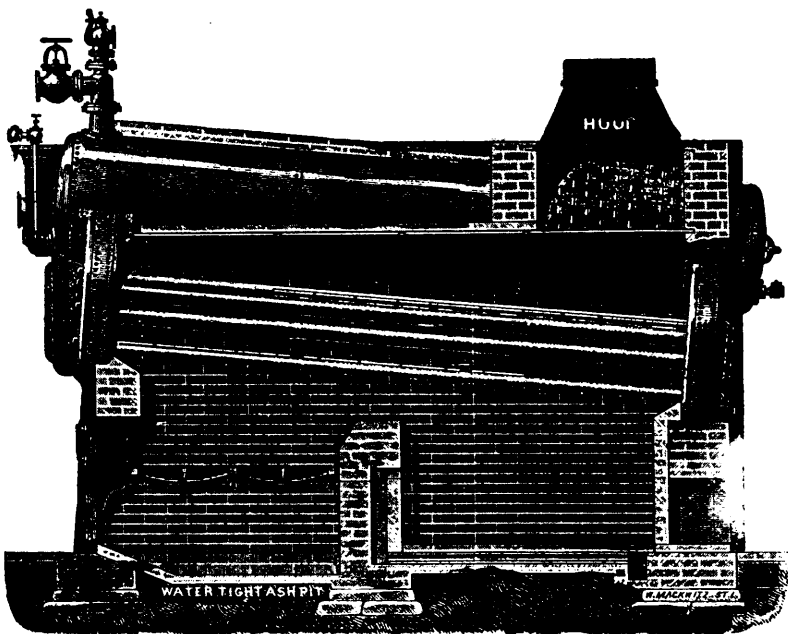
The water can often be got out
and the job finished by means of

Trade **The Pulsometer** Mark
Steam Pump

whilst you would be collecting the
necessary tackle for ordinary pumps.

The Pulsometer Engineering Co. Ltd., Reading, England.

CANADIAN REPRESENTATIVES **PEACOCK BROTHERS** CANADA LIFE BUILDING **Montreal**



HEINE SAFETY BOILER

MANUFACTURED BY

The Canadian Heine Safety Boiler Co.
TORONTO, ONT.

THE HEINE SAFETY BOILER—Made in units
of 100 to 500 h.p., and can be set in batteries of
any number. Suitable for Mines, Pulp Mills, Water
and Electric Installations, and large plants generally.
The best and most economical boiler made.