

PROFESSIONAL PAGE

CHARLES H. MITCHELL, C.E.

Member Canadian Society Civil Engineers.
Member American Society Civil Engineers.
Assoc. Mem. Institution Civil Engineers (Lon.
Assoc. American Institute Electrical Engineers
Rooms 1004-5 Traders Bank Bldg.
Telephone Main 7396. **Toronto.**

BUCHANAN & BRAKE Drilling Contractors

Estimates given on all kinds of work
pertaining to the drilling and equip-
ing of Oil, Gas and Water Wells.

PETROLEA AND GORE BAY, ONT.

BUDDEN, HANBURY A.

F. M. Chart, I. P. A., Barrister, Solicitor,
and Patent Attorney

**PATENT OFFICE
MONTREAL**

Offices, New York Cable Address, "BREVET"
Life Building

HILDER DAW

A.M.C.S.C.E., M.C.M.I., M.L.E.S., A.M.I.N.A., M.R.I.
Consulting, Civil, and Mining Engineer.

Constructions, Surveys, Sewage Disposal,
Drainage, Quantities, Supervisions, Certificates
Tel. E. 1332, Drafting Office. Tel. M. 2797.
Office. Room B32 Board of Trade Buildings,
MONTREAL.

RIDOUT & MAYBEE

**Solicitors of Patents
Counsel, Solicitors and Experts in
PATENT SUITS**

Agencies in the leading countries of the world
JOHN G. RIDOUT, 103 Bay St., J. E. MAYBEE
Barrister, etc. **Toronto.** Meech, Eng.

PATENTS
DESIGNS, TRADE MARKS
SOLICITORS OF CANADIAN
AND FOREIGN PATENTS.
EXPERTS IN PATENT SUITS
CONSULTING ENGINEERS.
CONFEDERATION LIFE BUILDING
HORTON & COPE

WHEN WRITING TO ADVERTISERS

You will confer a favor on both advertiser and publisher
by mentioning this paper.

CANADA SALES CO.

Correspondence solicited from Manufacturers
and others desiring representation in the
Dominion of Canada.

Address all communications to

Canada Sales Co.
86 King St. East.
Toronto.

TRANSPORTATION NOTES.

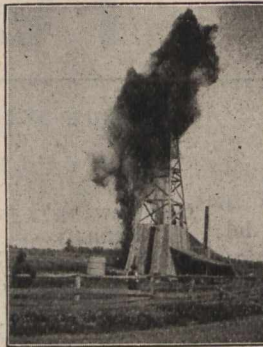
The Allan Steamship Company is ar-
ranging to establish a weekly steamship
service between Canada and France. The
company now runs a direct steamer every
three weeks. The Canadian Pacific is
also considering the establishment of a
first-class steamship service to Antwerp,
calling at a French port. This would
give two direct lines from Canada to
France.

The Grand Trunk Company will apply
to Parliament this session for an Act re-
pealing that section of the statute which
provides that the fare for each third-class
passenger by any train on the company's
line between Montreal and Toronto shall
not exceed two cents per mile, and that

at least one train containing third-class
carriages shall run every day throughout
the length of the line.

The Montreal Board of Trade has de-
finitely decided to establish a transporta-
tion bureau at an estimated cost of \$5,000
per annum. An expert in transportation
matters will be employed to advise sub-
scribers. It is claimed that since the
creation of the railway commission other
cities, principally in the West, have se-
cured advantages in rates over Montreal,
by bringing their claims before the com-
mission.

The interstate commerce commission,
Washington, has made a decision that is
of much interest to Canadian railroads.
It states that a Canadian road having



Torpedoing an oil well at Petrolea, Ont

Drilling Contractors

WATER, SALT, OIL and GAS WELLS

to any depth from 100 to 3000 feet. Contracts
taken in any part of Canada. Excellent refer-
ences. Estimates. Geological reports. Expert
Drillers and Complete Drilling Rigs Furnished.

Established 1865

JAMES PEAT & SONS

Petrolea - - - Ontario

YOUR PROFESSIONAL CARD

Should be in the Canadian Engineer—
It would place you among men of high
professional standing.

SEND FOR RATES.

The CANADIAN ENGINEER
wishes to be the most useful
publication to

Contractors and Engineers

If your office is out of Toronto, and you
wish contractors in or near Toronto to tender,
send your plans and specifications to our
office. An engineer experienced in field work
is here to take charge of them.