

Couples Here

We sell Shoes that are the BEST Productions of the Best makers. Any day you want to buy SHOES RIGHT and the RIGHT KIND of SHOES turn your feet into our

RES.

Shoes

\$4.50 to \$7.00.

's Shoes

\$4.25 to \$8.00.

esses & Children

will admit.

LS'

TE CANVAS

TON BOOTS.

to \$1.50

to \$1.70

to \$1.90

to \$2.20

LING'S

ES.

TEED

and

IGS

not obtainable

RR, Agt.

et to Come--

Fast Color Crepe Paper TABLE COVERS.

The artistic reproduction of a linen table cover. Especially useful for luncheons and social gatherings, as well as in the summer home, because of its beauty and novelty. Size 63 x 84 in.

Regular 20c. each. **17c**

Friday and Saturday **25c**



HALF PRICE SALE

of Desirable Neckwear.

A big collection in neckwear specialties comprising the latest creations in neck dressing. Every known style is represented here at half their regular prices, and some less. These values must be seen to be appreciated.

Here are some of the prices:—

Regular 30c. to 50c. values for **15c.**

Regular 35c. values for **20c.**

Regular 50c. values for **25c.**

Regular 50c. to \$1.00 values for **40c.**

FANCY BOWS, TIES and NECK FIXINGS.

In Satin, Velvet, Silk, Draid, etc. Scores of pretty styles suitable for Women's, Girls' and Boys' wear. Regular values to 15c. each.

Friday and Saturday **5c**

SAVINGS on HOSIERY

This is an offering of excellent Hosiery for both women's and children's wear in exactly the weights that are wanted at this time. The great savings on these will warrant your buying for future use if not for present needs.

CHILDREN'S HOSE.

Values to 15c. pair for **8c.**

CHILDREN'S EMBROIDERED HOSE.

Values to 15c. pair for **8c.**

WOMEN'S CASHMERE HOSE.

Regular 25c. pair for **25c.**

Regular 40c. pair for **30c.**

Regular 50c. pair for **40c.**

Regular 70c. pair for **45c.**

Regular 90c. pair for **65c.**

Regular 95c. to \$1.20 pair for **78c.**

STARTLING VALUES

from the

HOUSE FURNISHING SECTION.

Embroidered Cushion Covers.

Brown Linen and White Lawn, with a neat hem-stitched hem, 2 inches wide, and Champagne and White Lawn frilled. They come in a magnificent range of beautiful new designs and colorings. Reg. 60c. and 70c. ea.

Friday and Saturday **56c**

Table Cloths.

Battenburg and Embroidered Tea Cloths in handsome designs that will give great satisfaction and wear. They come in sizes 35 x 35 and 40 x 40 inches. Regular 80c. ea.

Friday and Saturday **80c**

Duchesse Sets.

White Linen Sets, trimmed with insertion and lace, or openwork and solid embroidered with hemmed edge; four pieces in each set; runner measures 12 x 36 inches. Reg. 50c. set. Friday and Saturday **40c**

SMALL THINGS at SMALL PRICES

HAIR BARRETTES.—Of well polished shell, fitted with stout brass clips that will hold; various styles. Reg. 6c. each. Friday and Saturday **4c**

SHELL HAIR PINS.—Stout, flexible Hair Pins of stained shell, in dark shades. Reg. 7c. each. Friday and Saturday **5c**

PAPER TABLE NAPKINS.—Pretty colored border Napkins of Dennison's Crepe Paper; size 14 x 14 inches. Fast colors. Reg. 30c. a hundred. Friday and Saturday **6c**

MAPLE LEAF PINS.—In loose leaf books, containing a variety of the most popular sizes. Regular 6c. book. Friday and Saturday **5c**

SMOKE PEARL BUTTONS.—Strong, two hole Buttons, in assorted small sizes; pre-war values. Reg. 9c. doz. Friday and Saturday **7c**

WRITING PADS.—"Croxley Cambric" linen faced Pads, a paper possessing an ideal writing surface; Blue Linen. Reg. 45c. ea. Friday and Saturday **38c**

NICKLE PLATED SAFETY PINS.—12 assorted sizes on card; extra strong make. Reg. 4c. doz. Friday and Saturday **3c**

DOVE FASTENERS.—Assorted sizes in Black only. Reg. values to 9c. dozen. Friday and Saturday **6c**

LUCKY KAFFIR BANGLES.—Of Black Metal in spring make, to fit any size wrist. Special for Friday and Saturday **3c**

WOOD PENCIL CASES.—Containing Pen, Pencil and Ruler. Reg. 6c. ea. Friday and Saturday **5c**

EXCEPTIONAL CORSET OFFER.

Most suitable for any figure in comfortable fitting serviceable Corsets. They are made of fine White Coutil, well boned, strong tempered steels and four hose supporters of good quality elastic. Several different D. & A. styles to choose from. Reg. \$1.90 each. Friday and Saturday **\$1.60**

FRIDAY & SAT. BARGAINS

That Spell BUSY-NESS.

THE REASON thousands of ladies do their Friday and Saturday shopping at The Royal Stores is told in this list of REAL BIG BARGAINS.

The prices and values are so appealingly good that the Store should be busy early in the day with eager shopping crowds.

SHOWROOM

SILK KNITTED GOLF BLOUSES.

Splendid Blouses for cool summer evenings and early fall wear, in fancy and plain shades of Saxe, Lime and V. Rose. Reg. \$5.00 values for **\$2.90**

CHILDREN'S SILK POPLIN CAPS.

Trimmed with band of self and white material around crown and neat bow at side; shades of Navy, Pale Blue, Saxe and V. Rose. Reg. 55c. each. Friday and Saturday **70c**

TWEED & CLOTH SKIRTS.

Neat pin-striped Tweed and Navy or Black Cloth Skirts, in the newest English styles; some are trimmed with wide belt and buttons; others in neat, plain, full-gored styles. Reg. \$3.75 each. Friday and Saturday **\$3.30**

MISSIES' and CHILDREN'S HATS.

Crimoline and Silk, in the newest styles, trimmed with dainty pearly trails; the light weight of these hats make them especially desirable for warm summer days. Regular \$1.40 each. Friday and Saturday **\$1.15**

LADIES' SUMMER VESTS.

About 12 dozen, in fine White Elastic Jersey, well made and finished with narrow lace and silk draw string; sleeveless, low neck styles; good value at 30 and 35c. Reg. \$2.00 for Friday and Saturday **20c**



Big Reductions

—on—

Stylish Blouses

Pretty Blouses in Volles, Linens, Black Silk, Delaine, Cotton, Crepes and Percalines; slightly soiled and mused in the handling. Reg. 70c. values for **52c.**

Reg. 95c. values for **65c.**

Reg. \$1.30 values for **99c.**

Reg. \$1.75 to \$2.50 values for **\$1.25**

Reg. \$2.50 values for **\$1.75**

SPECIALS!

WOMEN'S LUSTRE COAT.

Stylish summer coat of fine Lustro in Cream, Saxe and Light Grey; stylishly cut and finished with sailor or military collar and cuff sleeves. As a general utility coat to wear over light dresses it would prove extremely useful and is remarkable value at the price of \$5.00 each. Special for Friday and Saturday **\$4.25**

COLORED ALL SILK RIBBONS.

Firm finish Taffetas, 2 1/2 to 6 inches wide; in every popular shade, suitable for millinery, sashes, hair ribbons, etc. Reg. values to 30c. yard. Friday and Saturday **16c**

PEBBLED LEATHERETTE HAND BAGS.

With strong, dull metal frame of fancy design; ball fastenings, double hand straps, corded silk lining and fitted with small coin purse to match; a splendid opportunity to secure a serviceable hand bag at a low price. Reg. 90c. each. Friday and Saturday **75c**

LADIES' & MISSIES' MIDDY COATS.

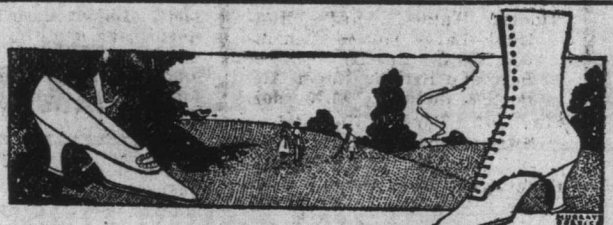
Made from White Jean and fine American Cotton. They are tastefully trimmed with Saxe or rose materials and finished in the latest style with sailor collars, belt and buckles, patch pockets, etc.; some are slightly soiled and mused in handling, but all must go at these prices. Reg. \$1.70 for **\$1.40**

Reg. \$2.00 for **\$1.65**

Reg. \$2.50 for **\$1.90**

SUIT CASES.

Of strong Brown Leatherette, well protected with solid leather corner pieces. The handle is strong and connected with stout metal fittings, which makes the value capable of carrying a fairly heavy weight; brass lock and fittings; two keys. Reg. \$1.95 each. Friday and Saturday **\$1.60**



FOOTWEAR.

GUN METAL PUMPS.

Suitable for street or dress occasions; half lined with kid; stylish Cuban heel; plain toe, and finished with a small metal ornament at front. Regular \$2.35 pair. Friday and Saturday **\$2.15**

WOMEN'S DONGOLA BOOTS.

Of superior quality, in stylish blucher shapes with flexible, solid leather soles and medium heels. A splendid boot for summer evenings and early fall wear. Regular \$3.30 pair. Friday and Saturday **\$3.05**

INFANTS' DONGOLA BOOTS.

Infants' Dongola Boots, 10 pairs of infants' laced boots in fine Dongola Kid, with wide, flexible soles, low wedge heels, in neat dressy styles that are both comfortable and up-to-date; sizes 2 to 5 1/2. Regular \$1.40 pair. Friday and Saturday **\$1.30**

Needed CROCKERY at Sale Prices.

Pink and Blue Stone China Cups and Saucers. Reg. 15c. each. Sale Price, 2 for **22c**

Japanese China Egg Cups. Regular 3c. each. Sale Price, 3 for **\$1.05**

Odd Vegetable Dishes. Values from \$1.40 to \$1.70 each. Sale Price **\$1.25**

White and Gold Sauce Boats. Regular 25c. each. Sale Price **22c**

Glass Cake Dishes. Regular 33 cents each for **30c**

Krystol Glass Preserve Sets. Regular \$1.00 set for **91c**

Krystol Olive Dishes, with handles. Regular 18c. each for **61c**

Fancy Dinner Sets, 32 pieces. Special Sale Price **\$8.20**



BIG SHIRT VALUES

MEN'S BLUE COTTON WORK SHIRTS.

Made from good quality material with collar attached, double stitched seams, good large bodies, and will give excellent wear at this most moderate price. Reg. \$1.10 each. Friday and Saturday **90c**

MEN'S PYJAMAS.

Unusual value in Men's Pyjama Suits of soft striped cotton in very neat stripes on Cream ground; tunic coat with silk ornaments and breast pocket; pants with draw string waists. Reg. \$2.00 suit. Friday and Saturday **\$1.70**

MEN'S NEGLIGEE SHIRTS.

Convenient coat styles in neat and dressy stripes on White grounds; stiff narrow cuffs and collar bands; good room styles that fit perfectly. Reg. \$1.25 each. Friday and Saturday **\$1.00**

MEN'S SHIRTS.

Of a splendid wearing American Cotton in a nice assortment of colors in neat pin stripes; soft fronts; stiff collar bands and cuffs; all sizes from 14 to 17. Reg. \$2.20 each. Friday and Saturday **\$1.95**

NEW and ATTRACTIVE FURNISHINGS FOR MEN.

MEN'S STRAW HATS.

A splendid line of fine Swiss Straw Hats, with cushion bands. They were made to sell at no less than \$2.50 each. This week we offer the balance of this big stock at still further reductions. Friday & Saturday, each **\$1.10**

BASEBALL CAPS.

Mottled Tweed Baseball Caps with leather sweat bands and light silk lining; sizes 6 3/4 to 7 3/4. Regular \$1.10 each. Friday and Saturday **95c**

MEN'S SILK CAPS.

Extra light weight Summer Caps of assorted silks in plain Khaki, Brown and Black, Shot in various shades and Grey checks; fitted with soft leather sweat bands that give great comfort to the wearer; size 6 3/4 to 7 3/4. Reg. \$1.75 each. Friday and Saturday **\$1.50**

"EXCELSA" HANDKERCHIEFS.

Soft lustrous Handkerchiefs that will retain their finish after washing; size 18 x 18 inches, with plain and fancy hem 1 and 1 1/4 ins. wide. Regular 25c. each. Friday and Saturday **22c**

SILK FLAGS.

Hemmed Union Jacks, Belgian and Russian Flags; size 9 x 10 inches. The most suitable for bicycles, motor cars, carriages etc. Reg. 18c. each. Friday and Saturday **15c**

Mens Grey Flan'l Pants Shirley

These good serviceable Flannel Pants are made from solid materials of seasonable weights in smart Grey shades. They are cut full and roomy and tailored in first class style. Have side straps and keepers for belt and would be good value at \$4.50 pair. Special for Friday and Saturday **\$3.00**

Men's Ties.

Wide flowing end styles in a splendid array of fashionable stripes and colors. Special for Friday and Saturday **20c**

President Braces.

The original President Brace; medium weight, firm webbing, detachable cord button loops and back cords that correspond to every movement of the body. Reg. 60c. pair. Friday and Saturday **53c**

Men's and Boys' Soft Collars.

A job line of plains, stripes and fancy patterns in Cottons, etc.; round and pointed styles with patent stud fasteners. Regular 15c. each. Friday and Saturday **25c**

Police Braces.

Braces of extra strong elastic webbing that will stand the hardest usage. They are firmly connected to solid leather button loops by durable metal fittings. The front loops are detachable. The back is of double elastic. Reg. 50c. pair. Friday and Saturday **42c**

Scout Pants.

Full fitting Scout Pants, made for hard usage. All seams strongly sewn. They are finished with belt loops, patch pockets and unlined. Reg. 150 pair. Friday and Saturday **\$1.40**



The Royal Stores Ltd.

Infants and Children's Bonnets.

A most unusual assemblage of pretty Summer Bonnets for children and infants. They come in the newest shades of V. Rose, Cream, Champagne, Dark Blue and Saxe; are daintily trimmed in many different styles. You will be pleased if you get one of these as it represents value seldom obtained at this price. Reg. \$1.20 each. Friday and Saturday **75c**

Mr. Grace Notes.

Strawberries were on sale in town the past few days at \$1.00 per gallon.

Mrs. Harold Rowe, of Heart's Content, after spending a few weeks at the home of her parents, Capt. James and Mrs. Wells, of Bristol Hope, left for home on Saturday.

Mr. Edward Parsons and his little daughter Mildred arrived from St. John's by Monday's train on a visit to Mr. Parsons' mother, Mrs. Jas. Parsons, and his sister, Mrs. A. L. Collis.

Mr. Parsons has resided at Brooklyn.

New York, for a number of years, but lately came to St. John's where he will reside with his family, who accompanied him. All his old friends were pleased to see him.

Mr. Joseph Power, of Boston, is in town on his annual vacation. Mr. Power looks forward to these visits with as much pleasure as his friends here, who are always pleased to welcome him.

The sch. Minnie Maud lately discharged a load of lumber at the ship-

Politicians are very careful today.

when discussing the wisdom or otherwise of the amalgamation. In some cases towns are in evidence, probably by people who were anticipating a little "heat" from the election work. It is not uncommon to hear some of the dissatisfied ones trying to console themselves by saying: "I suppose that's the best that could be done." We shall see. May the interest in and love of country grow in every politician's heart and smother

self, and then we will begin to prosper in this country.

Mr. Grace, July 18th, 1917.

NO EXCESSIVE WAR PROFITS.—When you order your suit from us you are assured of a square deal and full value for your money. A fine, serviceable suit in Serge or Tweed for \$28 to \$32, and an extra value Serge at \$35. "SPURRELL BROS., 365 Water St.—June 1, 1917"

Your Boys and Girls.

It has often been declared that the sound of running water has the effect of lulling one to sleep, but in India the mothers go much further than this to make their babies sleep by letting a small stream of water flow directly on their little heads.

Such means seems almost incredible, and one might think colds and other ailments would result that would kill the babies, but apparently this novel liquid lullaby has no harmful effects upon the native infants, and

they lie sleeping for hours with a stream of water flowing directly upon their little heads.

Danes Think a Revolution

Is Now Possible in Germany.

Copenhagen, July 10.—All the advices reaching here indicate that the situation in Germany is very serious. If the Liberal factions do not succeed in their Parliamentary aims, there are predictions here that trouble will

follow. The Danish newspapers only discuss the possibility of a German revolution.

The German censorship, of which the General Staff has charge, has always been very fluctuating. During the first days of the present crisis even alarming telegrams were allowed to pass, but since yesterday nearly all private and press dispatches have been stopped. Only insignificant official statements trying to gloss over the situation have arrived here.

Minard's Liniment Cures Diphtheria.