

STANDARD STOCK AND MINING EXCHANGE.

(Courtesy of J. P. Bickell & Co.)

Closing prices, October 9th, 1917.

Gold.		
	Bid	Ask
Apex.07 ³ / ₈	.08
Dome Extension11 ¹ / ₂	.11 ³ / ₄
Dome Lake15 ¹ / ₂	.16 ¹ / ₂
Dome Mines	8.00	8.20
Foley O'Brien55
Imperial.01 ⁷ / ₈	.02
McIntyre.	1.40	1.41
New Holly	5.20	5.25
New Ray55	.58
Porcupine Crown42
Porcupine Vipond25
Preston East Dome03 ¹ / ₂	.04
Teck-Hughes.43	.45
West Dome16 ¹ / ₂	.16 ³ / ₄

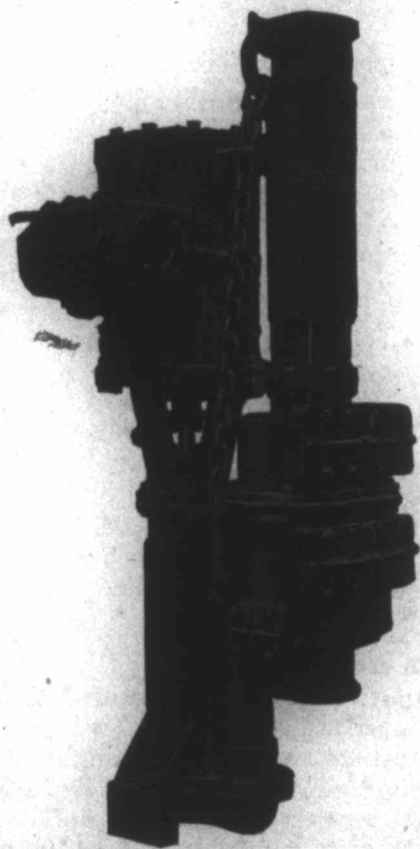
Silver.		
	Bid	Ask
Adanac.15 ¹ / ₂	.15 ³ / ₄
Bailey04	.05
Beaver37	.38
Chambers Ferland12	.13
Coniagas	4.00
Crown Reserve24	.25
Gifford04 ¹ / ₂	.04 ⁷ / ₈
Great Northern05 ¹ / ₂	.06
Hargraves10	.10 ¹ / ₄

Hudson Bay	40.00
Kerr Lake	5.30	5.55
La Rose43	.45
McKinley60	.61 ¹ / ₂
Nipissing	8.00	8.05
Peterson Lake09 ³ / ₄	.10
Right of Way05	.05 ¹ / ₂
Seneca Superior02	.02 ¹ / ₂
Silver Leaf01	.02
Temiskaming30	.30 ¹ / ₂
Trethewey14	.14 ¹ / ₂
Wettklauser.05	.07
Provincial37 ³ / ₄	.38
Mining Corporation	4.00	4.20

MINE OWNERS, SMELTERS AND REFINERS

who are seeking European markets after the war for their products are requested to write, giving fullest possible particulars, to

ERNEST PENN, Metallurgist,
Halstead Road, Winchmore Hill,
London, N. 21, England.



BAWDEN

Equipped Mines Insure Continuous Production

Continuous production is the Patriotic Duty of every mine operator in these stirring times.

BAWDEN Pumps will materially increase that production in the mines at all times. They will give absolutely dependable service on a 24-hour grind.

"Pump Service" is what you get when you install a BAWDEN Pump.

Your Inquiries Solicited



Write for Catalog

The Bawden Pump Company Limited
TORONTO CANADA