

# The Canadian Bridge Co., Limited

Manufacturers

WALKERVILLE, ONT.

Locomotive Turn Tables.  
Roofs, Steel Buildings and  
Structural Iron Work of all Descriptions

## RAILWAY AND HIGHWAY BRIDGES

### GERMAN ALSEN,

at higher prices than competitors has again this year been awarded the most important contracts of the World because practical tests by leading Engineers proved its merit and relative economy. Note the following:—

#### MEXICO CITY

#### NECAXA DAM

(shipping instructions so far 60,000 bbls.) approximate amount

XOCHIMILCO WATER WKS., MEX. approximate

Also enormous quantities for the PACIFIC COAST

1905—1906

120,000 bbls.

175,000 bbls.

200,000 bbls.

#### U.S. PHILIPPINE GOVMT.

GOVMT. ORDER SOUTH AMERICA

RIO DE JANEIRO, SATO'S, ETC.

AUSTRALIA, ENGLAND, SOUTH AFRICA, &amp;c.

1905—1906

40,000 bbls.

150,000 bbls.

40,000 bbls.

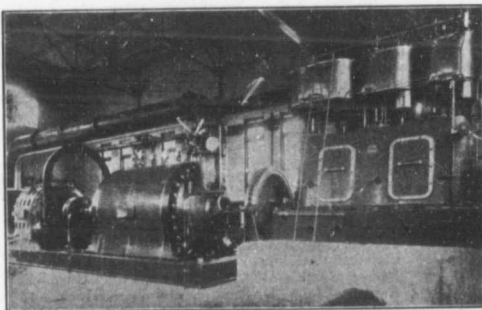
There is always a certain trade who will pay for the best. We also make American Alsen, the highest grade of domestic Portland cement.

### CEMENT

45 BROADWAY, NEW YORK CITY

We protect our customers!

### CEMENT



Stage Turbine Pump Electric Motor and High Speed Steam Engine  
Built for the Montreal Water and Power Co. to do 4,500 Imperial  
gallons a minute against 300 feet head Overall Eff. 70%.

## PATENT TURBINE PUMPS

KORTUNG TWO CYCLE GAS ENGINES,  
GRAVITY AND PRESSURE FILTERS,  
WATER SOFTENING APPARATUS,  
ELECTRICAL MACHINES.

— BUILT BY —

MATHER &amp; PLATT, LIMITED

MANCHESTER, ENG.

Drummond, McCall & Co., Montreal

# CANADIAN IRON AND FOUNDRY CO. LIMITED

Special Castings

Flange Pipe

Branches

Hydrants



## CAST IRON PIPE

Valves

Valve Boxes and

General Water

Works Supplies

SMALL DIAMETER WHEELS AND CASTINGS FOR CONTRACTORS

CAR WHEELS. CASTINGS OF ALL KINDS.

WORKS AT: { HAMILTON, ONT.  
ST. THOMAS, ONT.  
FORT WILLIAM, ONT.

MONTREAL, P. Q.  
THREE RIVERS, P. Q.  
LONDONDERRY, N. S.

Head Office: IMPERIAL BANK CHAMBERS, MONTREAL.