

## Cab Tariff.

Rates of fare authorized by city ordinances relative to public carriages, etc., etc.

Every cabman, on each occasion when his cab is hired, when demanded, shall hand his card to the person employing him.

No fare is to be paid to any cabman who refuses to hand his card to the person employing him, or who demands a greater rate than allowed by the following tariff:—

### The Cab Limits.

No. 1 Division will be composed of that portion of the city lying between Bathurst street, both sides; Bloor street,

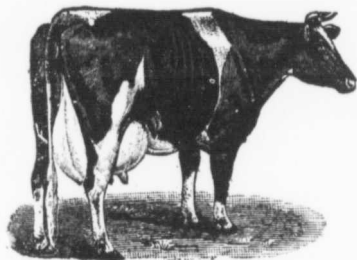
both sides; Sumach street, both sides, and the Bay.

No. 2 Division—Dufferin street, both sides; northern city limits, Pape ave and the Bay

No. 3 Division—Western city limits, northern city limits, eastern city limits and the Bay.

### One or Two Horse Cab.

First Division—One or two persons, 50 cents; each additional person, 25 cents. Second Division—One or two persons, 75 cents; each additional person, 25 cents. Third Division—One or two persons, \$1; each additional person, 25 cents.



FOR  
TABLE WHIPPING  
ICE CREAM.

RICH MILK, SKIM MILK,  
BUTTERMILK,

(CHURNED ON THE PREMISES DAILY).

FRESH BUTTER AND NEW LAID EGGS DAILY.

DROP A CARD OR TELEPHONE 2493.

OSGOODE DAIRY, 82 POWER STREET,  
1ST STREET EAST OF PARLIAMENT ST.

WHOLESALE AND RETAIL.

T. BRENNAND, Proprietor.