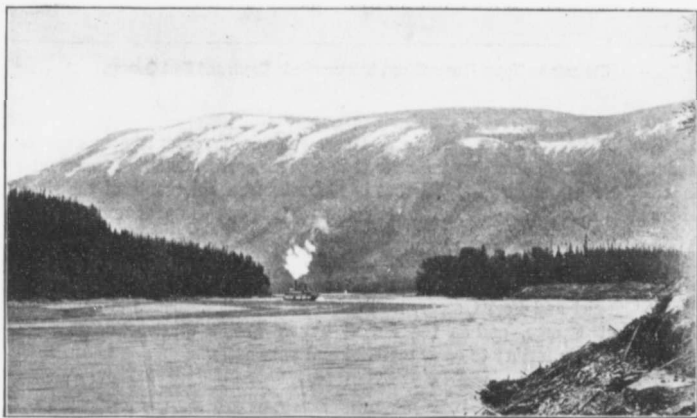


Upper Columbia River above Golden, B. C., at the base of the Rockies.

are kept open by an ice-breaker barge heavily armoured, which the up-going steamer shoves before her, leaving the barge above the narrows where it is picked up by the down-going steamer which also shoves it ahead of her and leaves it below the narrows. A channel is thus kept open all the winter, and there is no interruption to navigation.



Climbing the Swift Water on the Columbia River, near Burton, B.C.