

FASHION'S FAVORS.

New French redingotes appear, designed for Autumn teas and dinners, which have slightly open-throated corsages, lace fraises and slight draperies on the hips. There are pointed puffs on the shoulders of the close coat sleeves, folds of silk crossing the waist below the bust and rich lace ruffles at the wrists.

Fashion demands the odor of white flowers for sachets and scent bottles; white lilac, white violet, white hyacinth, jasmine, orchids, iris, and lily of the valley being the most desirable. The tuberose, however, is not liked, and a positive aversion is shown to white rose.

Biege color and dark seal-brown trimmed with brown and gold braid is to be worn in Paris, says Mme. Raymond. White cloth and gray velvet is another favorite combination.

Mousseline de soie and silk gauzes are the first fabrics imported for dinner dresses and bridesmaids' gowns for early Autumn weddings.

A tiny nosegay secured in the bow of the bonnet strings is the latest and Frenchiest touch of millinery.

Another fashion that requires much discretion to make it commendable, is the plain, tight, seamless bodice without visible fastening, that molds a perfect figure to perfection, but is merciless in showing up every flaw and defect in an imperfect form.

A brown dotted veil is said to be the one most universally becoming to the wearer.

A new pin for waving the hair has come into use in France. It does away with any need of gas jet or spirit lamp, and it is declared there is no humbug about their easy comfort, and the result is the natural wave, large and deep, which doubles in effect the quantity of hair. The pin is simplicity itself, and the operation of putting up the hair is so quickly accomplished that it would not tax the impatience of a child. It is called the Lenthéric pin.

Pretty dinner dresses are made of small brocades on black grounds.

For early Autumn wear come toque crowns and brims of cashmere embroidery, black reefers, with gold buttons and cording,

for slender figures, black shoulder capes trimmed with gilt and the flaring collar lined with black or yellow ostrich feathers.

Parisian jackets are longer in front than at the back, with high and wide sleeves, and are often made of Persian or Astrachan. Matelasse jackets and tight-fitting matelasse paletots have high Medicis collars in velvet brocade and sleeves of the same material. Other Parisian styles have collar ruches in ostrich feathers, Medicis collars with ostrich feather or Persian front and full pelerines in ostrich feathers, Persian or Astrachan.

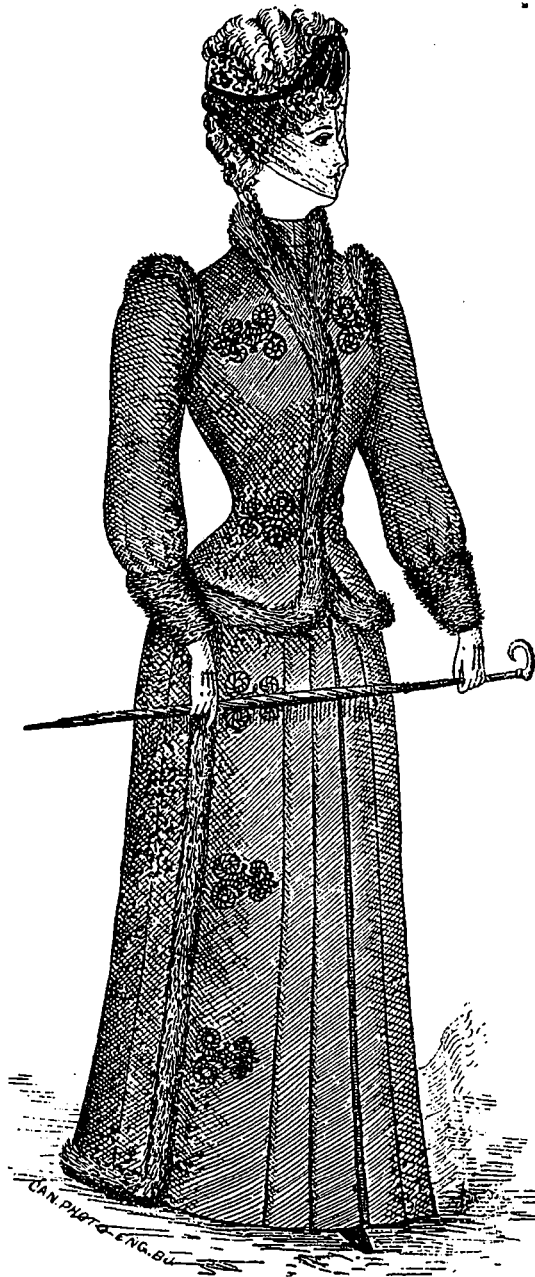
A stylish dress for seaside wear is made either in blue or white serge, with a band of blue foulard with white spots placed round the skirt, one long revers of this forming a part of the collar, turning back from the open jacket. The same material is used on the pockets and as a band on the cuffs. With it a linen shirt is worn, and a sailor tie and pointed Swiss belt.

There is no daintier house gown for a girl than a nainsook Empire belted high up with a three-yard sash of rose, green or brown china crepe.

Low-necked cambric shirts have given place to high-necked, long sleeved shirts of woven cashmere or silk, or of the thinner India gauze wool, chosen according to the season of the baby's birth. These machine-made shirts button down the front, and are easily put on. Knitted shirts of well-shrunk Saxony wool are so soft, warm and elastic that many mothers prefer them, and find them easy work for picking up in odd moments.

The bouquets made for bridesmaids are small, but extremely pretty, and easy to carry. They are often veiled in tulle, and are generally surrounded with white satin and a lace frill.

Moliere shoes, with high flap and rather square toes, are made now in tan-colored and black leather. If tan shoes are chosen,



WALKING COSTUME OF DARK GREEN CLOTH.

The front of the skirt is pressed in flat plaits, with a straight section at one side, on which are handsome ornaments in black braid. The back of the skirt is in plaits, the front edge and hem of the back drapery being finished with a narrow band of black fur. The body is close fitting, with fitted cloth jacket, slightly cut away at the front of the neck and at the lower front corners. The fronts are trimmed with braid ornaments and the entire jacket is edged with fur. A band of the same fur is set around the arm-holes, and there are wide, tapering cuffs of the fur to match: close collar and narrow V of the cloth.