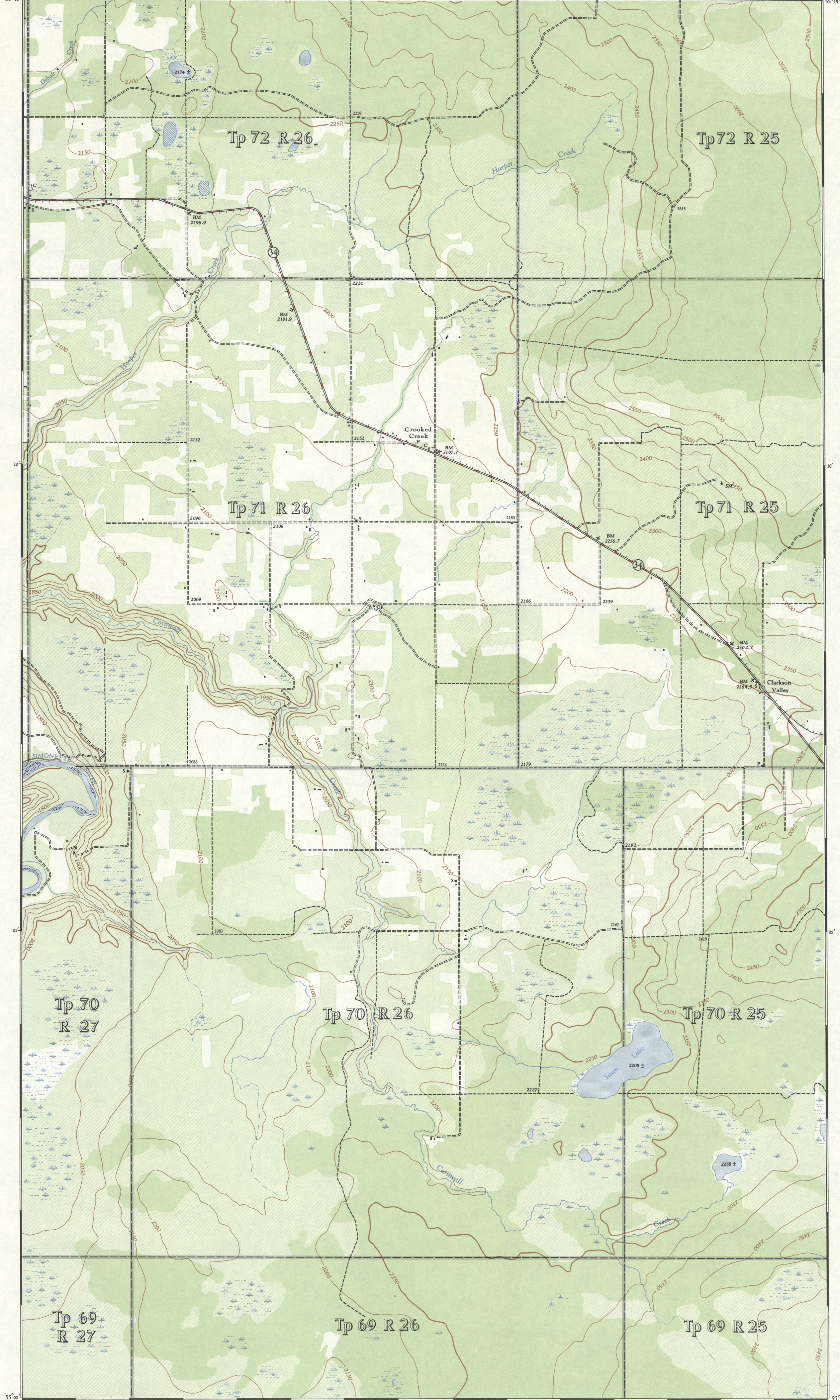




CANADA
DEPARTMENT OF NATIONAL DEFENCE
ARMY SURVEY ESTABLISHMENT

REFERENCE

Roads:	more than 2 lanes	Part completed
hard surface, all weather	2 lanes	more than 2 lanes
loose surface, all weather	all weather	all weather
loose surface, less than 2 lanes	all weather	all weather
Cart Track, Footpath Trail	Cart Track	Footpath or Trail
Special Snow Road, etc.		
Railways:		
standard gauge, multiple track		
standard gauge, single track		
narrow gauge, multiple track		
narrow gauge, single track		
Tramway		
Bridge, viaduct or overpass		
Boundary, International		
Province or State		
County or District		
Township, Seignior or Parish		
City or Town		
Reservation, Indian, Military, etc.		
Electric Power Line	on Steel Towers	on Wood Poles
Telephone, trunk route		
Triangulation Station		
Boundary Mon. Survey Mon.		
Bench Mark		
Spot Elevation, (in feet)		
House, Barn		
Buildings		
Mill or Factory, small, Saw Mill, etc.		
School		
Church		
with conspicuous Tower or Spire		
Post Office		
Telephone Exchange		
Mine or Open Cut		
Cemetery or Churchyard		
Quarry		
Sand or Gravel Pit		
Cliff		
Cutting		
Embankment, Dump, etc.		
Lighthouse		
Wharf or Pier		
Foreshore Flats		
Swamp or Marsh		
Lake or Slough, intermittent		
Glacier or Snowfield		
Stream, intermittent		
Irrigation Canal, Ditches		
Inundated Land		
Contours, elevation		
depression		
approximate		
Relief, not indicated by Contours		
Wooded Areas, heavy		
light		



INDEX TO ADJOINING SHEETS

83 W 8	83 N 5	83 N 6
SMOXY HEIGHTS	PUSKASCAU RIVER	WHITEMUD CREEK
83 W 7	83 N 4	83 N 5
DEBOLT	STURGEON HEIGHTS	VALLEY VIEW
83 W 6	83 N 3	83 N 4

See "Index to Maps Available" for sheets published.

The general public may obtain copies of this map from the Map Distribution Office, Dept. of Mines and Technical Surveys, Ottawa, at 25 cents per copy.

STURGEON HEIGHTS
ALBERTA
83 N/4 WEST HALF
FIRST EDITION

SUPERSEDED EDITION

Based on control by the Topographical Survey, Dept. of Mines and Technical Surveys 1947. Aerial photography by R.C.A.F. 1945. Topography, Compilation, Cartography and Reproduction by the Army Survey Establishment R.C.E. 1951-52.

MAGNETIC DECLINATION 27° 07' EAST AT CENTRE OF SHEET, 1952 Annual magnetic change 5' westerly

