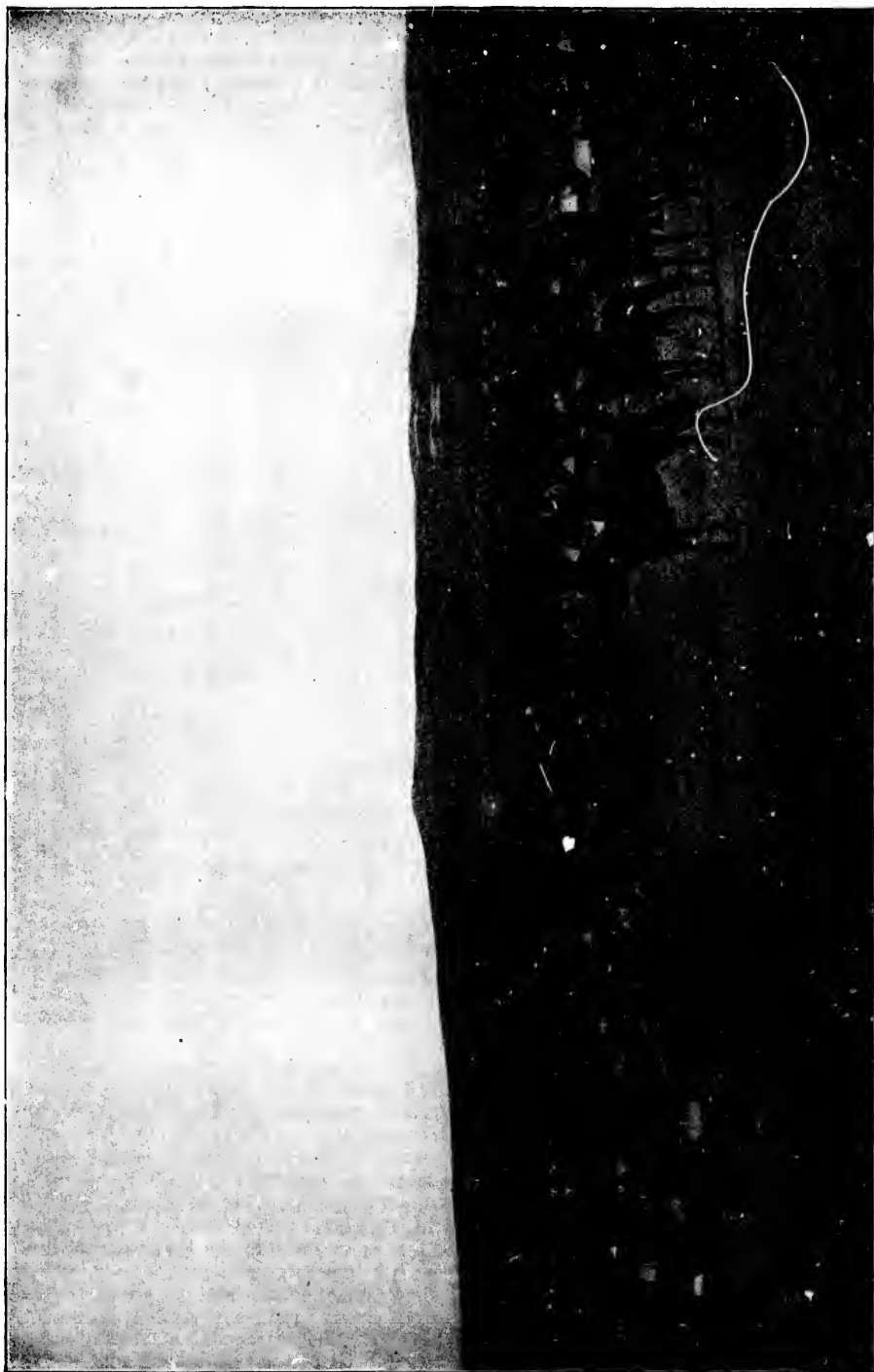


cut a road
Farm to
axemen
oad prac-
e batteries
s. Find-
he Sixty-
led reën-
e, and by
a field-
musketry

remarkable
ulation of
port had
ry in the
s, Gover-
appointed
icer to the
nant-colo-
Sixty-first
It was an
ceeding,"
governor,
ard, "to
nant from
e and thus
over the
the regi-
ny action
n justified
ant career
files."

the young
erience as
; but his
d quickly
opportu-
of combat
as shifted
re Colonel
d carried
and in his
w was pro-
the Sixty-
out a little

however,
At Fred-
roast by a
ck several
sts to this
hospital,
t, he met
mind still
ne pointed
ge against
ead it.



GENERAL MILES AND STAFF VIEWING THE HOSTILE INDIAN CAMP NEAR PINE RIDGE, SOUTH DAKOTA, JANUARY 16, 1891.

From a photograph taken and copyrighted by Grabill, 1891, Deadwood, South Dakota.