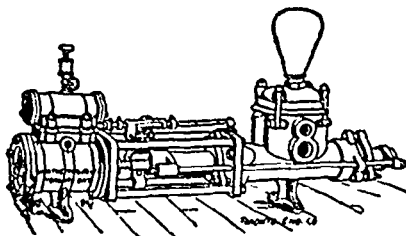


## Waterous Engine Works Co.,

WINNIPEG, MAN.

Engines and Boilers,  
Saw Mills.

Saw Mill Machinery,  
Northey's Steam Pumps,  
Grain Choppers,



We are HEADQUARTERS for

To Dealers who want  
nice CLEAN GOODS  
at ROCK-BOTTOM  
PRICES, communi-  
cate with us.

Brooms, Whisks, Brushes, Wooden-  
ware, Matches, Cordage, General  
Store Supplies, Fancy Goods, Toys  
and Games, Sporting Goods, Glass and  
Chinaware.

## H. A. NELSON & SONS,

MONTREAL - AND - TORONTO.

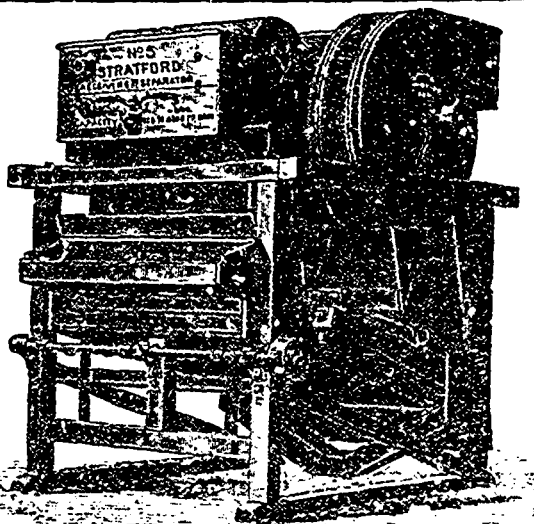
Represented in Manitoba and British Columbia by MR. W. S. CRONE.

## STUART & HARPER

AGENTS FOR

Stratford Mill Building Co.  
Flour Mill and Elevator Machinery  
Dustless Warehouse and Elevator  
Separators  
Dodge Wood Pulleys  
New and Second-hand Machinery  
of all kinds.

758 to 764 Main Street,  
Winnipeg.



## Cigars

Made in your own Country.

HISPANIA, RED CROSS, KHEDIVE

Try these Brands. They are Unsurpassed.

BRYAN & LEE, Winnipeg.

Andrew Allan, President. John McKechnie, Supt.  
P. H. Brydges, Vice-President. W. R. Allan, Sec.-Treas.

## THE VULCAN IRON COMPANY,

OF MANITOBA LIMITED

MILL ROLLS GROUND & CORRUGATED  
Architectural Iron Work.

ENGINE AND BOILER WORKS,  
GENERAL BLACKSMITHING.

BRIDGE BUILDING A SPECIALTY.  
TENDERS SOLICITED.

POINT DOUGLAS AVE., WINNIPEG.

## S. Greenshields Son & Co.

MONTREAL AND VANCOUVER, B.C.



We are offering for Spring Delivery the  
following special lines:

Crums' Prints. Tokio Pongees.  
Priestley's Waterwitch Serges. Cravenettes,  
Goutilles, Lustres & other Mohair Effects.  
Harrison's Brussel's Carpets.

Also a very large range of COTTON GOODS  
Samples with O. J. REDMOND, Room 18,  
McIntyre Block, Winnipeg.

## McMASTER & CO.,

—WHOLESALE—

Woolens, Tailor's, Trimmings,  
CARPETS,  
AND GENERAL DRY GOODS.  
TORONTO, ONT.

REPRESENTED BY E. C. S. WETMORE.

## JAS. McCREADY & CO.,

WHOLESALE

Boot and Shoe Manufacturers,  
MONTREAL.

W. WILLIAMS, AGENT.  
SAMPLE ROOM—Room M, McIntyre Block,  
MAIN STREET, WINNIPEG.

## M. and L. Samuel Benjamin & Co.,

26, 28, 80 FRONT STREET, WEST.  
TORONTO

- \* Shelf and Heavy Hardware,
- \* Metals, Tin Plate, etc.
- \* Lamp Goods and Gas Fixtures.

Plumbers and Steam Fitters' Supplies

Special attention given to import and  
export trade.

English House: Samuel Sons & Benjamin,  
161 Fenchurch St., London, E.O.