

## CHESS.

TO CORRESPONDENTS.

T. P. B., Seaforth.—Your communication received, with thanks for your problem, which is inserted below. We shall be always glad to hear from you.

BRAMPTON CHESS CLUB.—You are right as to your surmise: the printer inadvertently transposed the words "WHITE" and "BLACK." Were, however, the black P. a white one, as suggested, you would not overcome the difficulty, as then the black king would be in check.

F. T. J., Toronto.—Your problem received, and will have insertion, if you favour us (in confidence) with your name. We commenced our *Chess Department* with the following notice:—"Original problems and games solicited, accompanied by the names of the authors,—not for publication unless desired by the contributor, who may adopt for that purpose any signature he pleases."

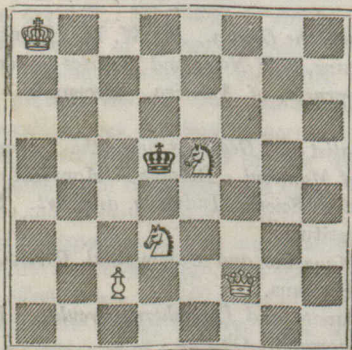
C. M. M., Montreal.—Your three problems received. We would gladly give insertion to No. 1, and the others as enigmas, if you would comply with the rule laid down when we commenced this department. See notice to "F. T. J." above.

Solutions to Problem No. 2, by "Brampton Chess Club," "Egmondville Chess Club," "J. B.," and "Clara," are correct: all others are wrong.

☞ Solution to problem No. 2 is withheld until our next issue, as several correspondents were misled by the transposition of the words WHITE and BLACK. The white side is at the foot of the diagram.

PROBLEM NO. 3.—BY A MEMBER OF THE EGMONDVILLE CHESS CLUB.

BLACK.



WHITE.

White to play, and mate in three moves.