

NEW UNION SCHOOL AT BRIGHTON, ONTARIO.

ELLIS & ELLIS, ARCHITECTS, TORONTO.

Union High and Public School Building

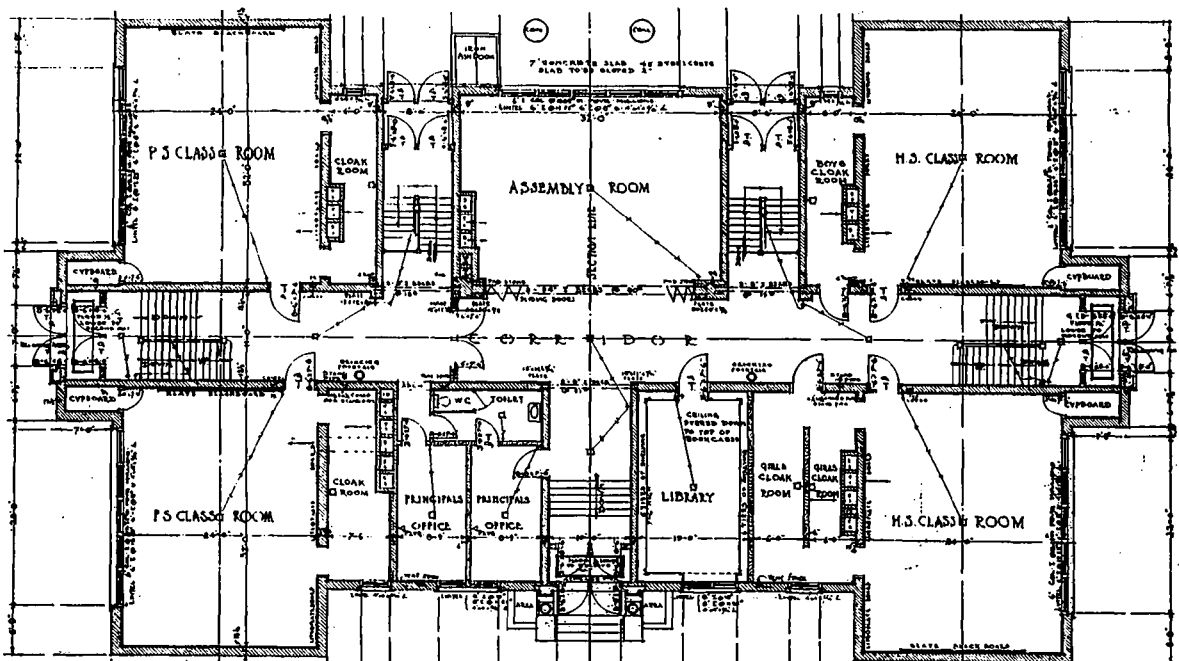
Unusual School at Brighton, Combining Class Rooms for Two Grades of Education.

WHEN the Board of Education at Brighton began to talk new school they found they could not finance the erection of two buildings, one for high school work and one for public school work, that would do credit to their town or site, which had been presented to the municipality for the purpose. Consequently, the architects were obliged to design an unusual school building to accommodate two grades of education.

The building erected is slow-burning construction. The basement walls are built of con-

crete, and the exterior walls above basement are hollow tile, faced with a rough textured red brick laid up in white mortar. The interior walls are hollow tile. Each class room is entirely surrounded with masonry, and is what is popularly called standard size. The cloak room systems are those adopted for public and high school work.

On the ground floor there are two class rooms devoted to public school, and two to high school. There are two principals' offices with a common toilet for their use only, a library with built-in



GROUND FLOOR PLAN, UNION SCHOOL BUILDING, BRIGHTON, ONT.