

dead tones of flowers and the butterfly's wing. To all these various elements add some singularities, which you would suppose to be the work of human art, in the Oriental styles, Persian and Turkish, or as in the Indian

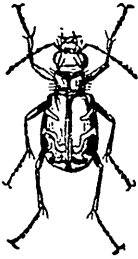


Fig. 10.

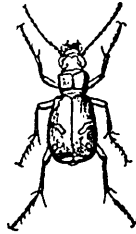


Fig. 11.



Fig. 12.

shawl, where the colors, slightly subdued, have found an admirable basis, time having gradually lent a grave tone to their sweet harmony."

When we have let go our common *Cicindela*, *Cicindela vulgaris*, fig. 10, let us look at the pictures of his—not sisters—but of his cousins and his aunts.

The Purple Tiger Beetle (*C. purpurea* Riv.) is figured as No. 11. It is nearly the same size as *vulgaris*, and is often to be found in its company. Its general color is a beautiful metallic purple; sometimes, however, it assumes a greenish garb. On either wing cover there is a bent



Fig. 13.



Fig. 14.



Fig. 15.

reddish line extended from the outer almost to the inner margin, a dot lower down and another at the extreme tip of the inner margin. It rather delights in chilly weather, and often appears before the snow is well gone.