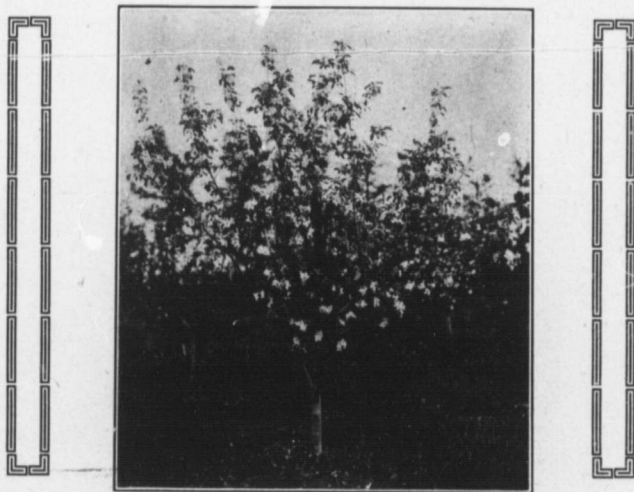


necessary growth and more particularly by the checking of terminal growth to divert more food into the formation of fruit buds than would ordinarily be the case. At the same time it is evident that summer pruning must be done late enough to avoid the stimulation of new growth. A large amount of wood should not be removed, particularly if the pruning is done rather early, as such pruning will

therefore using a large amount of plant food has been removed, and the tree can turn its whole energy into the development of strong fruit buds for next season's crop.

The apple orchard at the Experiment Station, in which the pruning work is being conducted, consists of 646 trees, including 170 trees of standard varieties: Hyslop, Spy, Greening, Baldwin, King, Hubbardston, Cranberry, Jona-



Summer Pruned Wealthy Tree in Full Bloom. Vineland.

undoubtedly stimulate the development of secondary shoots which may produce quite as much growth as the original shoot would have done. But if pruning is delayed until growth has practically ceased, and if it then consists mainly in taking out the growing tips of the leaders, it ought to have a considerable influence towards fruit bearing. In other words, the part of the tree which was forming new leaves and new wood, and which was

than and McIntosh; and 476 trees of fillers, Dudley, Duchess, Wagener, Wealthy and Ontario. The orchard was planted in the spring of 1911 and the pruning experiment started in the spring of 1914. Three systems of pruning are being followed: winter pruning, summer pruning and little or no pruning.

WINTER PRUNING: These trees receive the usual treatment as practiced in Ontario, being severely cut back and