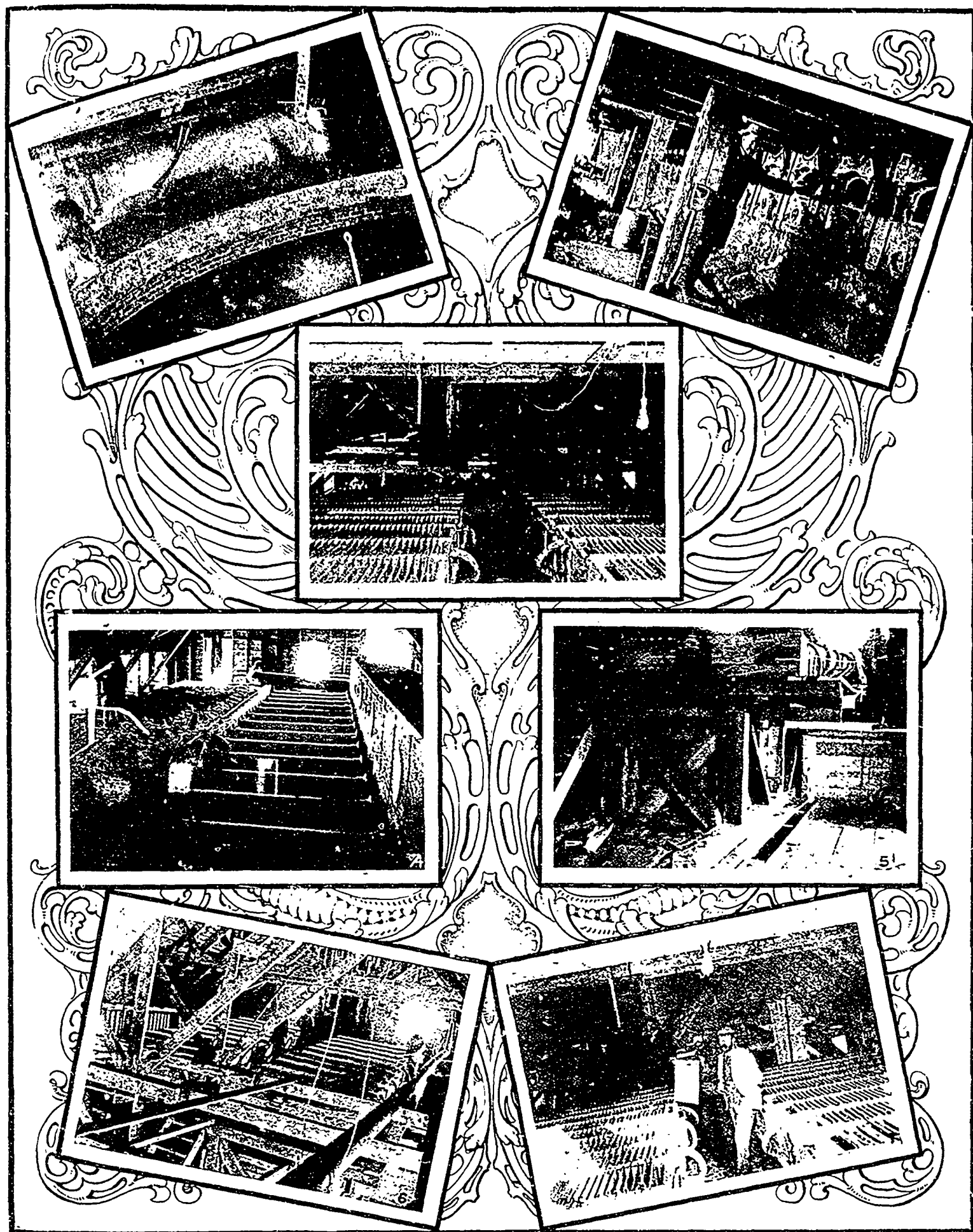


COPPER PRODUCTION IN NEW BRUNSWICK.



MILLING PLANT OF THE INTERCOLONIAL COPPER CO AT DORCHESTER, N B.

- 1 Leaching Tanks. 2. Front of Roasters and Set of Furnaces (Dr. Carmichael, of Boston, in front ) 3. Inside Electrolytic Tanks. 4. Top of Roasters. 5. Showing Tanks, Sheets and Spent Liquor Tank and Pump for returning acid to tanks for use again ; also tanks where cement copper is made from scrap. 6. Interior taken from rafters over Electrolytic Tanks. 7. Electrolytic Cells.