

The Western Fair

LONDON, CANADA

September
6th to 14th

1912

WESTERN ONTARIO'S POPULAR EXHIBITION

Good Classification for **Fruit and Flowers**

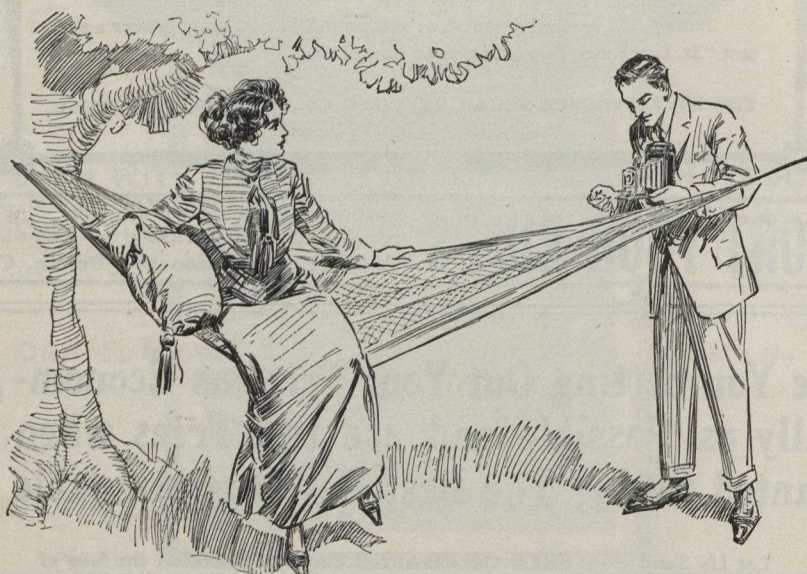
With Liberal Cash Prizes for same

SPECIAL RAILWAY RATES for Visitors and Exhibitors over All Railroads from Kingston to Detroit

Write the Secy. for Prize Lists, Entry Forms or any information

W. J. REID, President

A. M. HUNT, Secretary



On every outing:

KODAK

Add to the pleasure of the trip itself by taking pictures of the places and the people that interest you—then you will have the after pleasure that comes from possessing the pictures themselves.

Anybody can take and finish pictures by the Kodak system—and do it well. Because simpler to handle, Kodak films give better results than glass plates. You need no dark room for loading the camera, or for unloading. Even the developing is done without a dark-room and print making is easy (again no dark-room) with Velox paper. If you don't care to do your own developing and printing, Kodak film, being light and unbreakable, may be readily mailed to your dealer for finishing.

Kodak means photography with the bother left out. It offers the simple, easy way to good pictures—and it is less expensive than you think.

Catalogues of Kodaks and Brownies (they work like Kodaks) free at your dealers or by mail.

CANADIAN KODAK CO., Limited
TORONTO, CAN.

enty-five cents, and many of them for even less than that. To-day these same members are getting an average of three dollars a barrel, and I repeat that the buyer is getting better value for his money.

ASSOCIATIONS AS DISTRIBUTING SOCIETIES

Another great success has been scored in using the associations as agents for buying supplies. In making a comparison between co-operation in Denmark, for instance, and Great Britain, we find that in Denmark co-operation is concerned largely with agricultural production and selling. In Great Britain agricultural production and selling have made progress only during the last few years, but co-operative distribution of the necessities of life has made most extraordinary progress. The co-operative wholesale society of Great Britain last year distributed over \$600,000,000 of products, a sum so vast that it can scarcely be conceived.

There seems to be no reason why distributive co-operation should not make some headway in Canada. Many of the associations have already made some use of the organization for distributive purposes; indeed, the St. Catharines Cold Storage and Forwarding Company is a shining example of what can be done in this line. Their distributions have grown from a few hundred dollars the first year to ninety thousand dollars in 1911, and upon this it is safe to say there has been a saving of from ten thousand dollars to twenty thousand dollars a year. This phase of co-operative work might very well occupy our attention.

A Large Perennial Border

F. E. Buck, Central Experimental Farm, Ottawa

At Ottawa this year we have started a new perennial border twelve feet wide and some four hundred and fifty feet long. It will contain, in a few years, the best of everything that will grow in this climate. It is well to mention here, perhaps, that the work which is to be enlarged at the Experimental Farm along the lines of floriculture will deal to some extent with the solution of the problem of the barren parts of the west.

The Dominion horticulturist, Mr. W. T. Macoun, has been working for years to obtain shrubs, trees and plants which will stand the rigorous winters of the middle west. His work has been of untold value. Much work has been done, and much more will be done, in the way of testing varieties of flowering shrubs and flowers. When the results of this work are published it is hoped an added impetus will be given to the work of national betterment through the medium of the flowers.

Items of Interest

Eighty British farmers have recently arrived at Tilbury East township, in Kent, Ont. They will engage extensively in truck farming. Houses for their farms have been built in Toronto and are being shipped to Tilbury East in sections.

The Welland Cooperative Fruit-Growers' Association has been organized at Marshville, the members being principally fruit-growers of Wainfleet. They will handle their own fruit, purchase supplies and in other ways endeavor to make the fruit business a greater success. The following officers were elected: President, C. H. Wills; vice-president, R. R. Davis; secretary, W. E. Palmer.