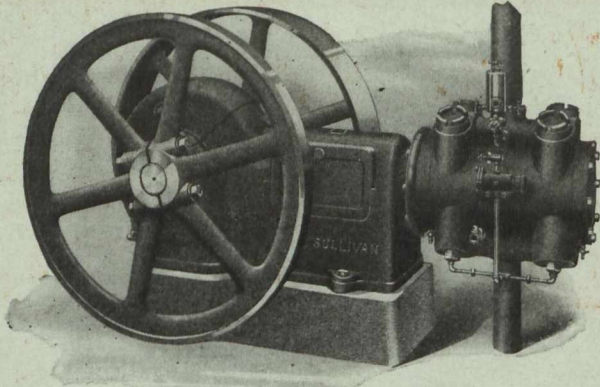
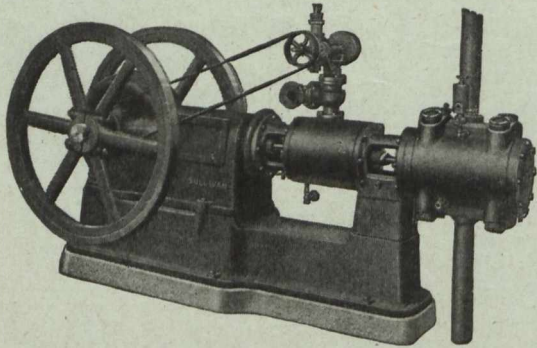


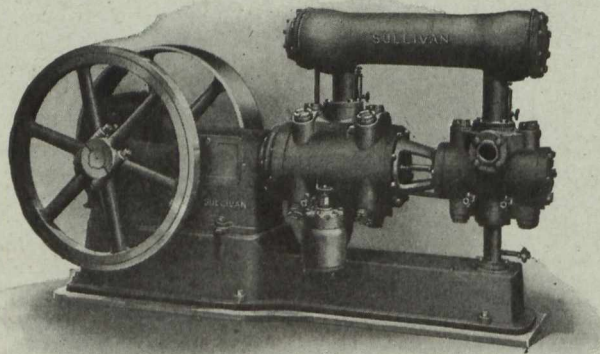
AIR COMPRESSOR RELIABILITY



Sullivan "WG6," Belted Compressor, 50-450 cu. ft.
Bulletin 675-R



Sullivan "WA6," Steam-driven Compressor,
120-450 cu. ft. Bulletin 675-P



Sullivan "WH-6," Two-Stage Belted Compressor.
Bulletin 675-R

Air Reliability

is the important thing for you, whether you use 100 feet of air power per minute, or 10,000.

In buying compressors you want—not a "cheap" machine, but one that you can depend on to run right and to run all the time—with greatest efficiency, with least power and attendance. These qualities are found to an unusual degree in these smaller

Sullivan Air Compressors

Splash lubrication, "Wafer," plate type inlet and outlet valves, water jackets on cylinders and heads, inlet valve unloading device, liberal area of bearing surfaces, high standards in materials and construction—are features of Sullivan small air compressors that secure to their owners steady, reliable, efficient air power service, year in and year out.

The types shown here can be shipped from stock in a number of convenient sizes.

Ask for prices.

SULLIVAN MACHINERY COMPANY

122 S. Michigan Ave., Chicago

Algiers
Boston
Butte
Calcutta
Christiana

Cleveland
Dallas
Denver
Duluth
El Paso

Joplin, Mo.
Juneau
Knoxville
London
Havana

Nelson, B.C.
New York
Paris, France
Pittsburgh
Spokane

St. Louis
San Francisco
Santiago, Chile
Salt Lake City
Sydney, N. S. W.

Tokyo
Toronto
Tunis
Turin, Italy
Vancouver
Wallace, Idaho