

Clean Skimming Means Good Living

The hog trough is no place to put butter. Wide awake farmers want the cream separator that skims the cleanest. It means more profit—better living. That separator is the Sharples Dairy Tubular—the separator that's different.

Sharples Dairy Tubulars have twice the skimming force of any other



separators—skim twice as clean.

Prof. J. L. Thomas, instructor in dairying at the agricultural college of one of the greatest states in the Union, says: "I have just completed a test of your separator. The skimming is the closest I have ever seen—just a trace of fat. I believe the loss to be no greater than one thousandth of one per cent."

That is one reason why you should insist upon having the Tubular. Tubulars are different, in every way, from other separators, and every difference is to your advantage. Write for catalog & the valuable free book, "Business Dairying."

The Sharples Separator Co.,
West Chester, Pa. Chicago, Ill.
Toronto, Can.



Comfort In Working Boots

A man cannot work when his shoes pinch—when a seam rubs against his toes until it makes a corn—when a wrinkle chafes his foot constantly. With the end in view of getting away from these defects so common in many working boots we have produced the Amherst. This boot is Blucher made, of soft grain leather, on the roomy, comfortable last shown above, with even seams. Entirely made of solid leather, it guarantees durability, stability and long service—at \$3.00 a more economical working boot cannot be made. We deliver them to you prepaid for \$3.00 Send to-day.

Geo. H. Anderson & Co.,
Port Arthur, - Ontario

PEACH'S LACE CURTAINS

Let us send you FREE our Mail Order Catalogues. Curtains, Linens, Hosiery, Blouses, Gents' Tailoring, Cutlery, Ladies' Fashion Booklet, Food and Show Card. Buy British-made Goods. Sturdy, Reliable makes. BENEFIT BY THE PREFERENTIAL TABLE.

POPULAR CANADIAN PARCEL

5 pairs Lace \$6.30 postage free.

Curtains (White or Ecru.)

Contains: 2 pairs superb Diningroom Curtains, 31 yds. long, 60 ins. wide.

1 pair exquisite Drawingroom Curtains, 4 yds. long, 2 yds. wide.

2 pairs choice Bedroom Curtains, 3 yds. long, 43 ins. wide.

Merit, Taste and Value have increased the \$6.30

Sale—every year. Free to your home.

Letter orders have thoughtful attention. We are here in fact with the markets and supply at lowest rates, have been in business 50 years, and only transmit Reliable Goods. Direct from the Looms at makers prices.

We can help you. Write for our Catalogues. FREE. FREE.

Prices may be obtained at the office of this Paper.

SAML. PEACH & SONS, The Looms, Box 665 NOTTINGHAM, Eng. Est. 1857.

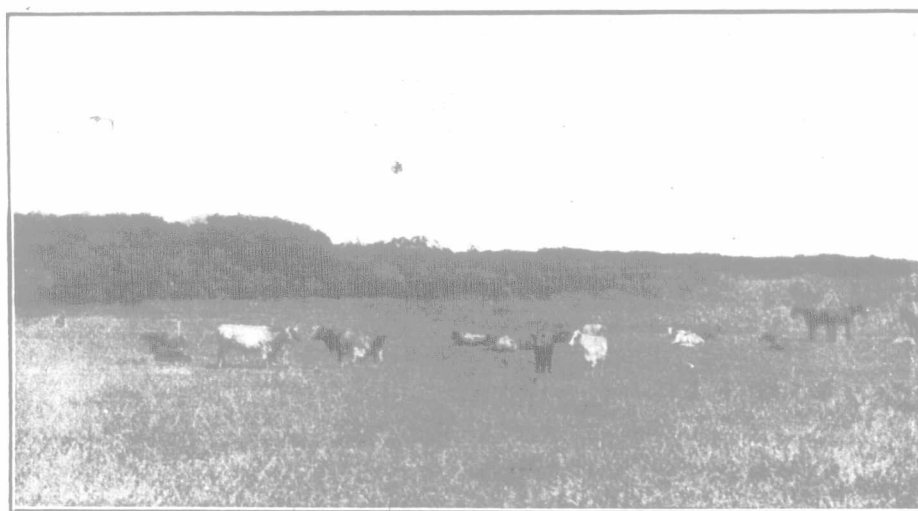
genus alone there are about two hundred and fifty species. But, apart from all these species, the task of knowing them is not so discouraging as at first it may seem. Of the clovers proper (Trifolium), there are only about a dozen really worth knowing, and at least half of these "don't count," as the small boy would say; for it seems to be only a botanist's vivid imagination which counts as a strict clover the yellow hop-clovers and the fuzzy, teardrop-shaped rabbit's-foot which seems to thrive best in the stoniest and most sterile places. We need to know five kinds—the common red, the buffalo, the dainty white, the alsike, and, of course, that English dandy, the tall, trim, crimson clover (*Trifolium incarnatum*). The botany devotes several pages to these few kinds and variations. But the following clover key is good enough for all ordinary walks, and has the advantage of being neither long nor abstruse: Red clover (*Trifolium pratense*) heads, compact; color, red. Buffalo, tall, rose-red (*T. reflexum*); running white (*T. stoloniferum*). White (*T. repens*), just small white heads—that's all. Alsike (*T. hybridum*), looks like the foregoing, but with flowers delicately rose-tinted. Crimson (*T. incarnatum*), long, crimson heads.

But do not make the mistake of thinking that you really know the clovers because you have seen them by day. You will not really know them until you have seen them at night. That statement is not to be limited to the clovers, but the clovers are pre-eminent in making, as Thoreau expressed it, "the midnight like Central Africa to most of us." William Hamilton

absorb a greater amount. Thus, certain leaves which in the excessive heat of midday place themselves vertically, that is, parallel to the course of the light rays, will be found in the morning and evening to keep their faces perpendicular to the light. In this way they may be said to follow the sun all day, facing eastward in the morning and westward in the afternoon. In this respect, the clover leaves are well worth careful observation.

One of the most interesting and important facts in connection with the clovers and other legumes has come to human knowledge within the last few years. On the roots are wart-like tubercles about the size of a pin-head. It has been discovered that these are but "little houses" for myriads of tiny, actively vigorous plants known as bacteria, which have the ability to take nitrogen from the air, and to make it available for the use of the plant; so that after a crop of clover has been grown in poor soil and has taken a supply of nitrogen from the air, it may be plowed under, and the infertile land greatly enriched by exactly the element for which nature has been calling.

I remember that, when I was a boy, the great moist snowflakes which floated gently down on an April day and made a light covering for the fields, were, partly in sarcasm and partly in humor, referred to by the country people as "the poor man's fertilizer." Their words approached more nearly to the truth than they knew or suspected, for the poor man's fertilizer and the rich man's, too, came, like the snow, from the invisible air, and through the interstices of the earth, to the unknown



A PASTORAL SCENE ON GOLDEN WEST STOCK FARM,
Property of P. M. Bredt, Regina.

Gibson thus describes his visit to a clover-field at night:

"The clovers are indeed a drowsy family; they keep regular hours, and make a thorough business of their slumber—red clovers, with their heads tucked under their wings, as it were, the young blossom clusters completely hooded beneath the overlapping upper pair of leaves, and every individual leaf below with folded palms. The white clovers were similarly well brought up, and continued their vespers through the livelong night—their little praying hands to be seen everywhere along the path. The yellow hop-clover played all sorts of antics with its leaves without seeming rhyme or reason. The tall bush clover, rising here and there among the slumberous beds, presented a complete surprise, being entirely changed from its diurnal aspect; the ordinary generous leafy spread of foliage now assuming the shape of an upright wand, each three-foliate leaf being raised upon its stem, with the leaflets folded inward, clasping the maternal stalk. It had its arms full indeed, and seemed conscious of its heavy responsibility."

It is also interesting to note to what extent the leaves of the clover "follow the sun." It is evidently to the advantage of the plant to have the leaf placed vertically when the sun's rays pour straight downward, making the light and heat excessive; it will, under ordinary circumstances, be far better to have the leaf placed at right angles to the light rays, since in this position it can

and equally invisible bacteria which, even then, were crowding one another within tubercles likewise unseen and unsuspected.

It was not until many years later that we discovered these beneficent creatures, and learned not only their function, but how, on this hint from them, to enrich the soil directly by applying to it artificial cultures of the special bacteria within these root-borne tubercles. Thus we now do rapidly what the clovers and other leguminous plants have for years been doing slowly. This discovery is having no little bearing on agriculture, and especially in the connection with the continued drain of nitrogen from the soil by the removal of crop after crop. This peculiar ability of the clover is one factor in its value as a rotation crop.

A cereal takes from the soil only one-half as much nitrogen and about one-fourth as much potash as root crops. For this reason, clover will thrive where wheat cannot be successfully grown, and will leave the land fit for wheat again. There are several reasons for this. First, the clover has long roots that extend deep into the earth and therefore may take the food from far down and bring it nearer the surface; second, the root nodules can transform the free nitrogen already explained; and third, the roots and stubble improve the tilth of the ground. It is, therefore, not practicable to raise successfully the same crop on the same land; deep-rooted crops should alternate

Horse Owners! Use

GOMBAULT'S

Caustic Balsam

A Safe, Speedy, and Positive Cure

The safest, Best BLISTER ever used. Taken the place of all liniments for mild or severe action. Removes all Bunches or Blemishes from Horses and Cattle. SUPERSEDES ALL CAUTERY OR FIRING. Impossible to produce scar or blemish. Every bottle sold is warranted to give satisfaction. Price \$1.50 per bottle. Sold by druggists, or sent by express, charges paid, with full directions for its use. Send for descriptive circulars.

The Lawrence-Williams Co., Toronto, Ont.

DOMINION EXPRESS

Money Orders and Foreign Cheques

The Best and Cheapest System of Sending Money to any place in the World.

A receipt is given purchaser. If order or cheque is LOST or DESTROYED the amount will be promptly REFUNDED. No Red Tape. Full information from any local Agent Dom. Exp. Co. or C.P.R.

Central Business College

WINNIPEG, MAN.

For full particulars get our new Catalogue "H." F. A. WOOD W. M. HAWKINS

Principals



LADIES

Send for a FREE Sample of ORANGE LILY

If you suffer from any disease of the organs that make of you a woman, write me at once for ten days treatment of ORANGE LILY, which I will send to every lady enclosing 3 cent stamps. This wonderful Applied remedy cures tumors, leucorrhoea, lacerations, painful periods, pains in the back, sides and abdomen, falling, irregularities, etc. like magic.

You can use it and cure yourself in the privacy of your own home for a trifle, no physician being necessary. Don't fail to write to-day for the FREE TRIAL TREATMENT. This will convince you that you will get well if you continue the treatment a reasonable time. Address MRS. F. V. CURRAH, Windsor, Ont.

We Own 80,000 Acres of the

Best Wheat Land

In Western Canada.

Prices from \$7.00 per Acre up.

We can sell you a farm cheaper than any real estate firm in the West, simply because the land we sell is our own; you do not need much cash to buy from us; write for particulars.

FARMER'S COLONIZATION AND SUPPLY COMPANY
6 Stanley Block, Winnipeg, Man.

SUNNYSIDE

is an orchard land sub-division in the famous South Thompson River Valley, 24 miles from Kamloops, British Columbia, and on the main line of the C. P. R.

SUNNYSIDE

has river, rail and road transportation facilities. The best soil in B.C. Plenty of water for irrigation purposes. A southern exposure and beautiful surroundings.

SUNNYSIDE

Will grow anything grown in the North Temperate Zone, from apples to apricots. No late or early frosts. The finest climate in B.C. Land all cleared, free from stones and ready to plant your trees on now. We run no excursions, but you can come any time after your seeding is done, and we will pay your fare both ways if you purchase. Write for information to

J. T. ROBINSON,

Manager B.C. Orchard Lands Ltd., Kamloops, B.C.