

Sydney Basic Slag

OUR Ontario salesman writes that he is being worked to death dealing with the inquiries we are sending him. The 6,000 tons of Sydney Basic Slag that have been used in Ontario since 1913 are telling their tale, and farmers are now looking for our goods. Even if you are using other fertilizers with good results, we want you to use a ton of Sydney Basic Slag this Fall and try it bag for bag against what you have hitherto employed. We are satisfied you won't get any worse results, and when you come to settle the bills you will find it easier to pay \$20 than \$30 or \$35. Don't you think so? Send us your name and address right away, and we will have our general salesman call on you.

Interesting descriptive literature on application.

The Cross Fertilizer Co., Limited,
Sydney, Nova Scotia

Auto Tongue Truck on Deering and McCormick Binders

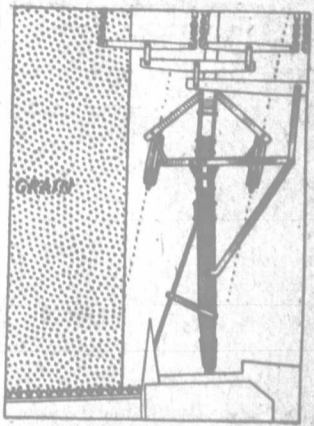
SELF-STEERING FEATURE

The binder is purposely thrown out of square in this illustration in order to show clearly the steering action of the tongue truck wheels.

When the outer end of a binder platform starts to hang back, it pulls the tongue truck toward the grain.

Any movement of this tongue truck toward the grain turns the truck wheels in the opposite direction and at so great an angle that they automatically steer the binder back to its proper square cutting position, with the horses moving steadily straight ahead.

The binder cuts a full 8-foot swath with less work for both driver and horses.



For A Sure Harvest

IF your Deering or McCormick binder is in good condition when it goes into the field the chances are all in favor of its finishing the job without trouble. Should you have an accident, both repairs and extra help are within calling distance. The farmer who uses a Deering or McCormick binder is safe as can be. He can depend upon it to harvest his crop with the least possible work and trouble.

There are some Deering and McCormick features it will pay you to know about even if you do not need a binder this season. You will want to see the new auto tongue truck that shortens the work by hours and eases the strain on horses and driver. The wide, deep-lugged steel main wheel with its 10-inch face; the strong, well-braced reel with its outside reel support; the equalizer that keeps the canvases running true; the three handy levers for tightening and loosening the canvases; are all important features because they help in the work of harvesting your grain.

Visit the local agent soon and see these machines. It will pay you. Would you like to read about them in the quiet of your home—then drop us a line at the nearest branch house.

International Harvester Company of Canada, Ltd.

BRANCH HOUSES
At Brandon, Calgary, Edmonton, Estevan, Hamilton, Lethbridge, London, Montreal, St. Battleford, Ottawa, Quebec, Regina, Saskatoon, St. John, Winnipeg, Toronto

When Writing Advertisers, Please Mention "The Farmer's Advocate"

CREAM WANTED

We think we have the longest experience. We try to give the best service. We need your cream and will make it "worth your while" to ship to us. A card brings particulars.

Toronto Creamery Co., Ltd.
TORONTO

CREAM

Where are you shipping now? And what are you getting for your cream?

We want more individual shippers and more men to gather cream for us.

Write for our proposition.

Silverwoods Limited
LONDON, ONTARIO

CREAM

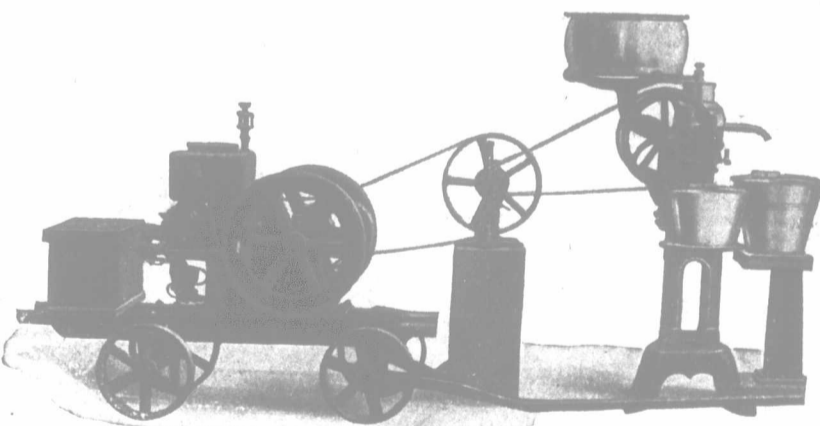
We are prepared to pay the best price for cream at all seasons of the year. We pay express charges and furnish cans. Write for particulars.

WESTERN DAIRY, LIMITED
ST. THOMAS, ONTARIO

NITRATE OF SODA

is necessary for big crops. Send post card for free literature to

WM. S. MYERS, Director
25 MADISON AVE., NEW YORK



SOLVING THE "HIRED HELP PROBLEM"

This MONARCH 1½ h-p. Engine attached to our Intermediate Friction Clutch Pulley solves one of the problems for hired help. No counter shaft needed with this attachment. The machine driven is always given its speed automatically, and needs no special attention from the operator. We also make special pulleys to fit separator.

Get our catalogue. It's free for asking. We make all sizes of engines, from 1½ to 3 h-p. Ensilage Cutters, Grain Grinders, Pump Jacks, Saw Frames, Friction Clutch Pulleys.

Canadian Engines, Limited
DUNNVILLE, ONT.

FROST & WOOD
Smith's Falls, Ont.
Selling Agents East of Peterboro

CANADIAN PACIFIC

NEW TRAIN SERVICE—NOW IN EFFECT
TORONTO--LONDON--DETROIT--CHICAGO

"THE MICHIGAN SPECIAL"		"THE QUEEN CITY"	
Lv. TORONTO	11:50 p.m. Daily (E.T.)	Lv. LONDON	9:00 a.m. Daily
" GALT	2:16 a.m. " "	" WOODSTOCK	9:39 a.m. " "
" WOODSTOCK	3:30 a.m. " "	" GALT	10:29 a.m. " "
" LONDON	4:43 a.m. " "	" GUELPH JCI	10:57 a.m. " "
" CHATHAM	7:00 a.m. " "	Ar. TORONTO	12:15 p.m. " "
Ar. WINDSOR (MCR)	8:30 a.m. " "		
" WINDSOR (CPR)	8:50 a.m. " "		
" DETROIT (Fort St.)	9:30 a.m. " "		
" DETROIT (MCR)	8:10 a.m. " (E.T.)		
Lv. DETROIT	8:25 a.m. " "		
Ar. CHICAGO (MCR)	3:30 p.m. " "		

Through the trip-lighted sleeping cars
Detroit and Chicago only

Particulars from any Canadian Agents, or B. Howard, D.P.A., Toronto

R.M.S.P.

FORTNIGHTLY SAILINGS
by
Twin-Screw Mail Steamers
FROM
ST. JOHN (N.S.)
AND
HALIFAX (N.S.)
TO THE
WEST INDIES

Excellent Accommodation for 1st, 2nd and 3rd Class Passengers.
SPECIAL FACILITIES FOR TOURISTS.

NEXT SAILING FROM HALIFAX:
R.M.S.P. "Chignecto"
June 30, 1916
APPLY TO
The Royal Mail Steam Packet Co.,
57-59, Granville St., HALIFAX (N.S.)
OR TO THE
LOCAL TICKET AGENTS.

GRAND TRUNK RAILWAY SYSTEM

DOMINION DAY

SINGLE FARE
Good going July 1st. Valid to return same date.

FARE AND ONE-THIRD
Good going June 30th, July 1st. Valid to return July 3rd.

Between all stations in Canada east of Port Arthur, also to Detroit and Port Huron, Mich., Buffalo, Black Rock, Niagara Falls and Suspension Bridge, N. Y.

Tickets now on sale at Grand Trunk ticket offices.

Mention this Paper