

## The Canadian Bridge Co., Limited

Manufacturers

WALKERVILLE, ONT.

Locomotive Turn Tables,  
Roofs, Steel Buildings and  
structural Iron Work of all descriptions

### RAILWAY AND HIGHWAY BRIDGES

## Wood Fibre <sup>HARD</sup> <sup>WALL</sup> Plaster

White Rock (Hydrated) Lime

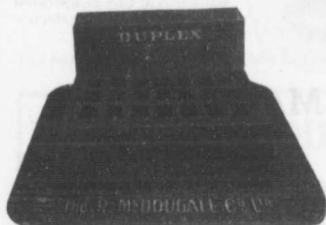
MANUFACTURED BY

THE IMPERIAL PLASTER CO., Limited

Dealers in Cement, Lime, Fire Brick, Fire Clay, Plaster Paris.

King St. (West of Subway) TORONTO

## OUR DUPLEX CATCH BASIN



has been recommended by eminent Engineers as the

.. Most Convenient for Cutter Work ..

Can be adjusted to different heights and is easily placed.

—We also Make—

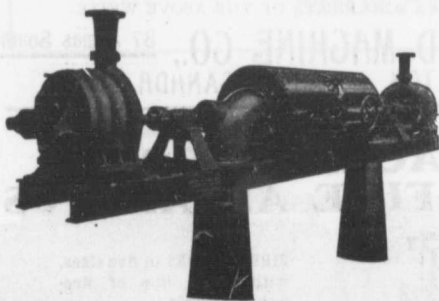
Manhole Covers and Frames

Hydrants and General Castings

The R. McDOUGALL COMPANY, Limited,

GALT, CANADA

## PUMPS FOR WATER WORKS



### WATER WORKS SYSTEMS INSTALLED

Boilers, (Return Tube and Water  
Tube,) Tanks, Penstocks,  
Mill Machinery.

Two Worthington 3-Stage Turbine and McCormack  
Water Wheels, built for Port Arthur, Ont., Water  
Works, 1440 gal. per minute against 350 ft. head.

Builders in Canada of

### "WORTHINGTON" TURBINE PUMPS

## The John McDougall Caledonian Iron Works Co.,

Estimates Cheerfully Furnished

HEAD OFFICE AND WORKS: Montreal.

Limited.

DISTRICT OFFICES:

MONTREAL, 82 Sovereign Bank Building.

TORONTO, 810 Traders Bank Building.

WINNIPEG, 251 Notre Dame Avenue

VANCOUVER 416 Seymour Street.

NELSON, Josephine Street.

NEW GLASGOW, N.S., Telephone Building.