

## MUNICIPAL ENGINEERS, CONTRACTORS AND MATERIALS

**WILLIS CHIPMAN**

Hon. Grad. McGill University.  
M. Can. Soc. C.E. M. Am. Soc. C.E.  
Mem. Am. W.W. Ass'n.

**WATERWORKS, SEWERAGE WORKS, GAS  
WORKS, ELECTRIC LIGHT AND  
POWER PLANTS**  
Reports, Surveys, Construction, Valuations  
**103 BAY STREET - TORONTO**

**R. E. SPEAKMAN, C.E.**

A. M. Inst. C. E., 1878.

**CONSULTING ENGINEER**

Waterworks, Sewerage and Sewage Disposal.  
Municipal Improvements.  
Granolithic Pavements.  
Electric Light Plants.  
Drainage and Irrigation of Land.  
Coal Handling Plant and Machinery.  
Plans, Specifications and Estimates.  
Construction and Valuations.

Canada Life Building - TORONTO

**Roderick J. Parke**

Am. Can. Soc. C.E., A.M. Amer. Inst. E.E.

**CONSULTING ENGINEER**

Hydraulic Power Development. Long Distance  
Power Transmission. Steam Plants, Electric  
Lighting and Power Systems. Tests.  
Valuations. Reports.

51-53 James Building, Cor. TORONTO, CANADA  
King and Yonge Streets

Telephones { Office—Long Distance Main 3047  
Residence—Long Distance North 2204  
Telegraphic address: "Rodparke."  
W. U. Code, Univ. Edition.

**WILLIAM H. BREITHAUP, C.E.**

M. Am. Soc. C.E., M. Can. Soc. C.E.

**CONSULTING STRUCTURAL ENGINEER**

Foundations, Bridges, Buildings.  
BERLIN, ONT.

**CEMENT TESTING****Dr. J. T. Donald**

Official Analyst to the Dominion Government.  
Established 1880.

Physical and Chemical Tests on all kinds of  
CEMENTS and RAW MATERIALS. Prompt  
returns and lowest rates consistent with accurate  
work.

112 St. Francois Xavier Street, Montreal, Canada

**ROSS & HOLGATE**

Consulting and  
Supervising Engineers

Waterworks, Electric Light and Power  
Plants, Structural Work, Reports,  
Estimates, Arbitrations.

80 ST. FRANCOIS XAVIER ST. - MONTREAL

**RAILS**

For Contractors, Switches, Gir-  
ders, etc.  
New and Second Hand.

**LOCOMOTIVES AND CARS**

John J. Gartshore

83 Front St. West,

(Opposite Queen's Hotel.) TORONTO.

**FIREMEN'S LADDERS**

—AND—

**LADDER TRUCKS**

We make the lightest, quickest,  
strongest and cheapest. Every Town  
and Village needs them and can afford  
them. They will save 50 times their  
price in insurance premiums. Write  
for circulars and quotations.

**THE WAGGONER LADDER CO., Limited**  
LONDON - - - ONT.

**John H. Jackson**  
CIVIL ENGINEER

WATER POWER, ELECTRIC RAIL-  
WAYS, STRUCTURAL STEEL.

Niagara Falls, Canada

Associated with Charles H. Mitchell,  
C. E., Hydraulic Engineer.

**Charles Brandeis**  
Consulting Engineer

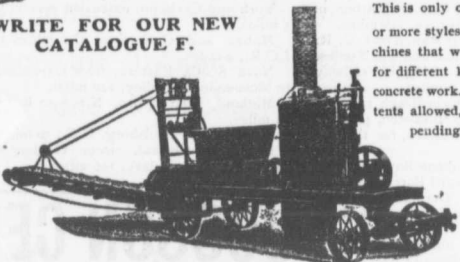
Estimates, Plans and Supervision of Hydraulic  
and Steam-Electric Light, Power and Railroad  
Plants. Specifications, Reports, Switchboard  
Designs, Complete Factory Installations, Etc.  
Long Distance Telephone Main 3266.  
Cable Address: Brandeis-Montreal.

W. U. Code, Univ. Edition.  
Liverpool & London & Globe Building.

NONTREAL

**The Greatest Concrete Mixer Yet Made**

WRITE FOR OUR NEW  
CATALOGUE F.



This is only one of 30  
or more styles of ma-  
chines that we make  
for different kinds of  
concrete work. 10 pa-  
tents allowed, others  
pending

**NUMBER OF  
PATENTS**

35,664
672,934
673,035
673,036
675,037
698,182
698,910
699,667
699,668
701,312

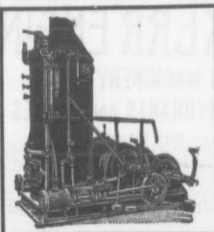
Also

Mortar and  
Asphalt Mixers

**DRAKE STANDARD MACHINE WORKS**

Factory,  
7-9-11-13 Garden Street, Chicago.

Office and Salesroom, 298-300-302 W. Jackson Boul.  
CHICAGO, ILL., U. S. A.



We are quoting  
Attractive  
Figures  
on High-Grade

**HOISTING  
ENGINES**

of any size and capacity  
for Contractors, Builders  
and others.

**W. H. C. MUSSEN & CO.**  
MONTREAL.

CANADIAN  
CONTRACTOR'S  
HAND-BOOK  
and  
Estimator

Third Edition

Price \$1.50; to  
subscribers of  
the Canadian  
Architect and  
Builder, \$1.00.

SEND FOR A COPY

C. H. Mortimer  
Publishing Co.  
Toronto.

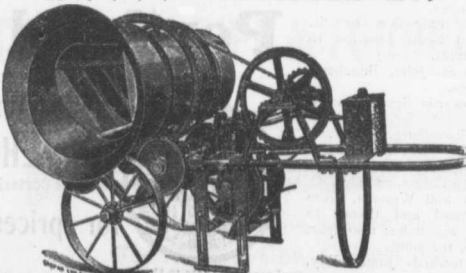
Please mention THE CONTRACT RECORD when corresponding with advertisers.

**THE McKELVEY CONCRETE MIXERS**

MANUFACTURED  
BY

**W. A. McKELVEY,**

McKinnon Building,  
TORONTO.



These machines  
are made to mix  
either continu-  
ously or in  
batches, and can  
be operated  
either by Hand,  
Steam or Gas-  
oline Power.