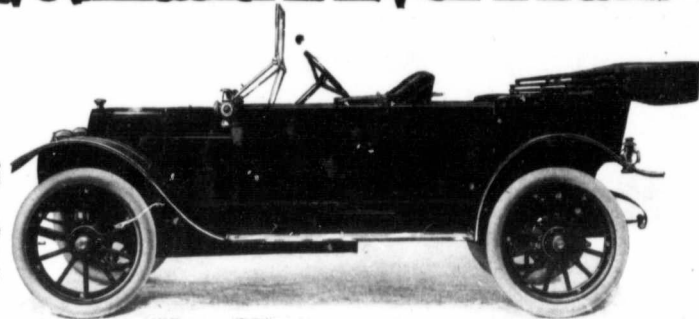


"The Best Investment I Ever Made"



Back of Case Automobiles Stands the 70-Year-Old Reputation

of a Company whose products are famed the world over for their quality—and the same identical principles of construction that have made Case Machinery world-famous for good work, economy, dependability and long life are applied to the building of Case Automobiles.

You've decided to buy an Automobile. You run through the current automobile advertising with its confusion of strange names—people you've never heard of before—who promise a lot, but of whose ability to make good on their promises you know nothing. Then your eye lights on the name "CASE"—for 70 years a household word the world over—and you say, "They're the people that make Case Threshing Machines. I can place confidence in what they say. They've made good on their promises for 70 years and an automobile they're willing to risk their reputation on, must be a good one."

And that impression is strengthened the more carefully you study the detailed construction of Case cars. You lift the hood, and what do you find?—the finest power plant ever put into an automobile—the simplest, most compact, silent, accessible, powerful automobile engine that has ever been developed—the motor that has made the Case known far and wide as

"The Car with the Famous Engine"

You'll never lack for power with the Case engine, always more than enough for ordinary use, with plenty in reserve for sudden emergencies as is proven by the many victories of the Case "30" on Race Tracks, Durability Runs and Hill Climbing Contests

And all the other features of Case construction match the engine. Compare

the lines of the Case—the furnishings—the trimmings—the tires—the length of the wheel base—the springs—the size of the cylinders—the ignition—the transmission—the axles—the radiator—the lamps—the top—with cars more than twice the price, and you'll find the Case embodies all of the best and most desirable features and all of the advanced ideas in construction found in the higher priced cars.

Case Service

begins when you purchase your car and lasts as long as the car lasts. It is comprised of a nation-wide organization of 10,000 Case Agents and 65 Branch Houses scattered at convenient points throughout the United States and Canada—all of them equipped to promptly take care of Case cars. Wherever you go you may be assured of a welcome, hospitable treatment and fair dealing at the hands of the Case local agent. He'll furnish you information on the best roads, hotels, etc., and help you in every possible way to get the most out of your car

If you want the utmost limit of durability and service combined with low cost of operation

Write Today for the Case Automobile Catalog

describing in detail "the car with the famous engine"—the handsomest car at any price—the "CASE"

J. I. CASE THRESHING MACHINE CO.

INCORPORATED

RACINE, WIS. U. S. A.

CANADIAN BRANCHES, TORONTO, WINNIPEG, REGINA & CALGARY