

STORES OPEN 8.30 A. M.

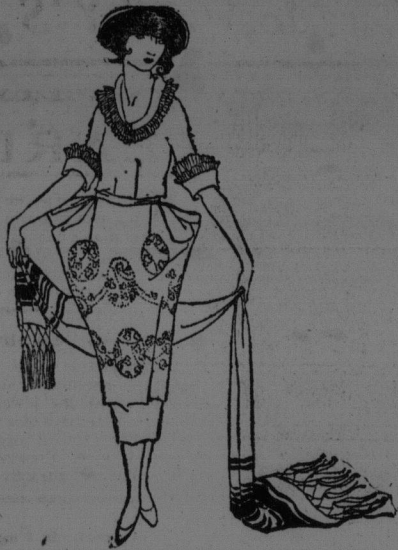
CLOSE 5.55 P. M.

FRIDAY 9.55 P. M.

SATURDAY, 12.55 P. M.

Announcing an Authoritative Showing of Individualized Apparel for Autumn Wear

Tuesday and Following Days Fall Opening of Fur Coats and Wraps Of Regal Beauty



COATS ARE FASHIONED OF RICH FABRICS.

Handsome, soft-surfaced fabrics form the very distinctive coats of Autumn and Winter. These are characterized by their large collars, trimmings of fur, loose hanging lines and lavish use of buttons. Many variations of greys and browns predominate. Among the favorites are mole, bark, owl, nut, grebe, beaver, etc.

Styles were never more delightfully adapted to street and dress wear.

THE NEW SUITS PRESENT A VARIETY OF STYLES.

Autumn finds women eagerly awaiting the new suits. They are here! They are delightful! Fur trimmed, embroidered or tailored, fashioned with or without belts. Velours, Silvertones and Duvetyns are of engrossing interest. Lines generally speaking are youthfully straight and slim with now and then a fuller model.

Finding a suit this season that is smart, attractive and practical for many purposes is indeed simple when one sees the individual models being displayed here.

AUTUMN FROCKS OF EXCEEDING CHARM.

Modes include those designed exclusively for street, for afternoons, little affairs for evening, and to serve many purposes.

Beading, embroidery, fancy stitching and other devices known to clever designers, are used profusely. Chemise, Tunic and Basque lines prevail for frocks in general, while in the more elegant afternoon gowns bouffancy still is favored.



NEW HATS THAT HINT OF PARIS.

Your pleasure in selecting new hats just now will be intensified by the softly becoming draped lines of the many new fabric models. Duvetyns, taffetas and velvets fall gracefully into turbans, tams and off the face shapes.

Inspection is likely to disclose the very hat for which you have been looking.

PLAID SKIRTS ARE POPULAR.

Autumn days simply demand one of these. You can find them in real bright or more subdued color blendings. Many are prettily pleated, but for those who prefer them we have also some nice plain styles with belts and pockets. From the standpoint of both style and serviceability, these skirts are more than usually attractive.

BLOUSES TO WEAR WITH THE NEW SUIT.

The overblouse is found in the most delightful of styles. Long tunics and Balkan effects are gayly and elaborately beaded and embroidered, and you will be surprised at the many clever variations.

Other particularly smart models are fashioned with round necks and short kimono sleeves. Color reigns supreme in these.

Whatever your suit is, we can find you a handsome blouse to correspond.

We extend the courtesies of this store to all visitors to the exhibition during their stay in this city. Every department is admirably ready for fall with—newest fashions—best qualities—and pleasing assortments. Your early inspection is invited.

Half the joy of possessing beautiful furs is having them at the beginning of the season. You will make no mistake by selecting the Coat, Long Stole or Choker you are contemplating just now. Stocks are complete, fashions settled, and the weather suitable.

Buy them now and enjoy a full season's wear out of them.
Coats are as follows:—

MINK COAT, 40 inches long, fashioned with full belted back and two skin band around bottom—Lining of pussy willow brocade	\$765.00
HUDSON SEAL, 32 inches long. This has taupe squirrel cape collar and band around bottom. Girdle is made of leather strands and lining is of brocade satin	\$680.00
HUDSON SEAL, 36 inches long, has large cape collar of beaver. The cuffs are in flaring style and the lining of broche silk	\$547.00
ELECTRIC SEAL, 36 inches long. Trimmed with large shawl collar and cuffs of Beaver. Back is in full belted style—Lined with broche satin	\$450.00
ELECTRIC SEAL, 40 inches long. This has large shawl collar and cuffs of Skunk. Full belted model—Broche satin lining	\$425.00
ELECTRIC SEAL, 36 inches long. Shawl collar and cuffs of Ring-tail Opossum. Back is cut full and belted—Broche satin lining	\$340.00
SHIRAS PERSIAN LAMB, 41 inches long. Large shawl collar and cuffs of dyed Raccoon. Belted model with full back—Fancy striped silk lining	\$510.00
BLACK PONY, 40 inches long, large shawl collar and cuffs of either Raccoon or Fitch. Belted style with full back—Fancy poplin lining	\$375.00
BLACK PONY, 36 inches long, large shawl collar and cuffs of Fitch—Belted and lined with satin.	\$335.00
BLACK PONY, 36 inches long, large shawl collar and cuffs of either Black Jap Fox or Raccoon—Satin lined	\$305.00
BLACK PONY, 40 inches long, large shawl collar and cuffs of dyed Sable—Satin lined	\$280.00
BLACK PONY, 32 inches long, large shawl collar of Ring-tail Opossum. Flaring cuffs of Pony—Lined with broche silk	\$225.00
SEALINE, 40 inches long, large shawl collar and cuffs of either Skunk or Natural Lynx—Belted back	\$375.00
PLAIN SEALINE, 36 inches long, large cape or shawl collar and full belted back. \$198 and \$220.00	
You can also find here an assortment of HAIR CONEY and KOLINSKY CONEY COATS.	
	\$103.00 and \$198.00

NECK PIECES

WOLF STOLES, animal shape, in black, taupe, battleship grey, georgette and pointed.	\$50.00 to \$118.00
FOX STOLES in georgette, taupe, black and pointed	\$110.00 to \$172.00
MINK STOLES in large flat pieces	\$170.00 to \$245.00
BLACK LYNX STOLES	\$76.00 to \$120.00
BEAVER STOLE CAPES, including long straight pocketed scarf	\$79.00 to \$161.50
LARGE HUDSON SEAL STOLES AND CAPES	\$190.00 to \$265.00
ELECTRIC SEAL STOLES AND CAPES	\$41.00 to \$70.00
LARGE SEALINE STOLES	\$51.50 to \$95.00

Also a large assortment of Chokers and other small Neck Pieces in Wolf, Australian Opossum, Ring-tail Opossum, Skunk, Mink, Mole, Jap Marten, Blended Sable, Ermine, etc.

CHILDREN'S FURS in WHITE THIBET and RING-TAIL OPOSSOM.

FUR POCKETS for Babies' Carriages and Sleighs.



Muffs To match all Stoles



KIDDIES' CLOTHES ARE DELIGHTFUL.

Why sigh and wonder if you will ever get their sewing done, when there are innumerable little garments here that will wear well and look the way you would want them to.

SWEATERS are in Pull-over and Coat styles, in all sizes from 2 to 12—dainty and practical colors and very desirable qualities. \$3 to \$7.50
COZY VELOUR KIMONOS—Showing in light and dark colors. Sizes 2 to 12 \$3.00 to \$5.25
FLANNELETTE UNDERWEAR—Night gowns, sizes, 1 to 16 yrs, \$1.35 to \$1.80; Bloomers, sizes 2 to 10 yrs. 65c. to 90c.; Pajamas, sizes 6 to 14 yrs., \$2.60 to \$3.25; Sleeping Suits with feet, \$1.60. Fleece Lined Sleeping Suits, heavy weight in white or grey, \$1.10 to \$1.70.

MIDDIES AND SKIRTS FOR SCHOOL.

Made of navy flannel or serge, in sizes 4 to 12 yrs. These are sold separately—Middies, \$6 and \$7.75. Skirts, \$5 and \$7.75.

GIRLS' REEFERS AND LONG COATS.

Cloths are in suitable weights for wearing now or in the winter, and all the favorite style touches of the new season are represented in the various models. Long coats are developed in Silvertones and other soft, warm fabrics in such colors as grey, Burgundy, brown and navy. Large collars that fasten close to neck are a popular feature.

Reefers are in regulation style with or without velvet collars.

GIRLS' WARM DRESSES.

These are in serges and other wool materials, fashioned in the smartest styles you have seen. Some are in straight belted effects, many are pleated and trimmings of braid or touches of colored embroidery are used extensively.

GIFT NOVELTIES FOR TOTS

AND SMALL BABIES.

Be sure and see our display of these attractive things. Hand knitted Booties and Jackets are in many dainty styles and stitches. Rattles, Cuddle Dolls, Beads to string, Surprise packages for sick children, Water Toys, Sand Toys, Sewing Sets, Rocking Dolls, Trumpets, Bubble Sets, Roly-Polys, Baby Record Books, Puzzles, Dolls with cut out clothes, etc.

Baby Bassinets, Baby Baskets on stands, Baby Wardrobes with four drawers, White Clothes Trees and Clothes Horses for baby's clothes. Separate Baskets, untrimmed or covered with white point despit—plenty of other useful and appropriate things.

(Children's Shop, Second Floor.)

PRETTY UNDERGARMENTS FOR WOMEN.

The luxury of a large supply of fresh undergarments comes within every woman's reach through the varieties of our fall stocks.

Here are garments that will interest you:

NIGHT GOWNS.

Made of fine quality cambrie or raincoat, with round or V-shaped necks. Some of the less expensive gowns are very plain and pretty, simply trimmed with beading and ribbons—More elaborate models are in Empire style or fashioned with lace yokes and sleeves.

There is a fine assortment for your selection.
\$2.25 to \$8.25

ENVELOPE CHEMISES.

Among these you will find ordinary straight styles or Bloomer Step-ins. The fabrics are fine and soft and only very dainty laces and edges are used for trimmings. To wear with evening frocks we are showing pretty styles made straight across the top, with lace straps.

\$1.15 to \$6.50

Underskirts, Knickers, Drawers and Corset Covers are in kinds equally attractive and the prices are very moderate.

For those who prefer silk undergarments—the varieties shown here will meet with instant approval.

In addition to being pleased with the smart and exclusive styles it is good to know that the quality, value and cost of this new Autumn merchandise compares favorably with the high standards maintained by this store.

Manchester Robertson Allison Limited
KING STREET • GERMAIN STREET • MARKET SQUARE •