

FIGURE NO. 199 W.—LADIES' JACKET.  
FIGURE NO. 199 W.—This represents a Ladies' Eton jacket. The pattern, which is No. 9076 and



FIGURE NO. 199 W.—This illustrates LADIES' JACKET.—The pattern is No. 9076, price 25 cents.

costs 25 cents, is in 7 sizes for ladies from 30 to 42 inches, bust measure, and may be observed differently developed and trimmed on page 215 of this publication.

This ~~style~~ double-breasted Eton jacket is shown in this instance made of green velvet and closed with three black silk-cord frogs in graduated sizes, silk-cord ornaments on the two seam sleeves being the only other decoration. The fronts are made close-fitting by single bust darts and above the closing they are reversed in lapels that extend

seamless back. The jacket reaches just to the waist, except at the center of the front, where it is deepened to form a point.

There is much diversity in the styles for Eton jackets and this one is particularly *chic*. Smooth cloth is the material most frequently chosen for its construction, fashionable shades being green, brown and national and military blue, and braid ornaments are applied on the upper part of the back and on the sleeves, frogs to match performing the closing. For general wear a plain finish of machine stitching may be adopted.

The hat is an odd shape in green straw, trimmed with pansies, black wings and white lace.

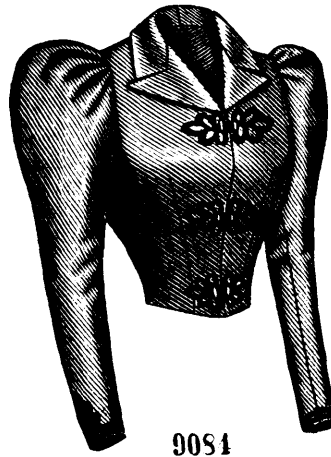
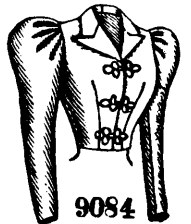
LADIES' FICHU CAPE-WRAP.

No. 9068.—This fashionable wrap is shown made of grenadine over taffeta silk and trimmed in a fluffy way with ruchings and frills of Brussels net. The cape portion, which is circular in shape with a

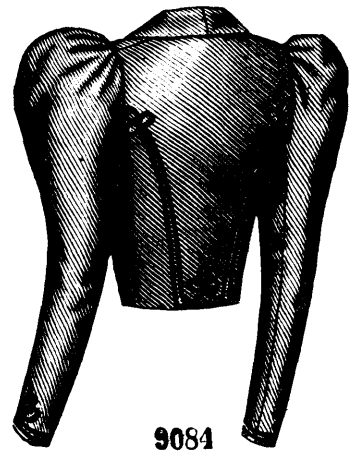
center seam, stands out in deep flutes and falls just to the waist. It is crossed below the bust in graceful fichu style, which is heightened by large tapering revers that are joined to the front edges below the bust and lapped on the fronts, revealing the cape in a V at the throat. The revers are covered with appliqué lace. Ribbons tacked to the lower corners of the cape under

toward the ends rises from the top of the standing collar and ribbon bows are set at the upper front corners of the revers.

This cape-wrap is a novelty suitable for very dressy wear. It will be made of satin, moiré, plain or fancy velvet and rich brocades, with handsome laces for overlaying the revers and ribbon and lace or jetted passementerie for decoration. A very desirable garment less elab-



Front View.



Back View.

LADIES' SINGLE-BREADED ETON JACKET, WHICH MAY EXTEND TO THE WAIST OR NEARLY TO THE WAIST.

orate in construction was made of black cloth lined with bright hued taffeta silk and ornamented with lace edging and velvet.

Pattern No. 9068 is in 7 sizes for ladies from 30 to 42 inches, bust measure. To make the wrap for a lady of medium size, will require 3 1/4 yards of silk 20 inches wide, with 2 3/4 yards of grenadine 20 inches wide. Price of pattern, 25 cents.

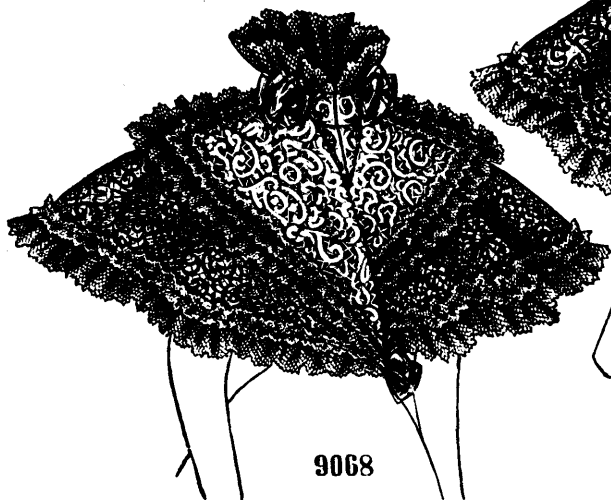
LADIES' SINGLE-BREADED ETON JACKET, WHICH MAY EXTEND TO THE WAIST OR NEARLY TO THE WAIST.

No. 9084.—This stylish Eton jacket is pictured made of green cloth, with an effective decoration of braid. The jacket is seamless at the center of the back and wide side-back gores separate it from the fronts, which are fitted by single bust darts. The closing is made with hooks and loops and braid frogs at the center of the front below lapels in which the fronts are reversed by a rolling collar. The two-seam close-fitting sleeves are gathered at the top and are of fashionable

size and style. The jacket may reach quite to the waist or nearly to the waist, as preferred, the fronts being deepened slightly at the center when it reaches to the waist.

As great a liking for the Eton jacket prevails this year, as last. It may be accompanied by a skirt of a like or different material and a shirt-waist of dimity, lawn or linen. Choice of material for the jacket is made from the various chevrot and serge weaves, and the finish is given by stitching or braid.

Pattern No. 9084 is in 7 sizes for ladies from 30 to 42 inches, bust measure. To make the jacket for a lady of medium size, calls for 3 1/2 yards of material 22 inches wide. Price of pattern, 25 cents.



Front View.



Back View.

LADIES' FICHU CAPE-WRAP.

in points beyond the ends of the rolling collar. Side-back gores separate the fronts from the

ribbon bows are carried to the center of the back and bowed. A frill of net that is narrowed