

unchanged in price. Dealers offer farmers 40 to 45c per bushel for their loads at the city market. We quote: Potatoes, 40 to 45c per bushel; carrots and beets, 45c per bushel; turnips, 20 to 25c per bushel; parsnips, 3c per pound; onions, \$1.50 per bushel; cabbage, 2 to 2½c per pound; celery, native, 40 to 50c, imported, 75 to 90c per dozen bunches; parsley, 30c per dozen bunches; lettuce, 40c per dozen bunches.

**HIDES**—The market is weak and lower, owing to poor quality of offerings and discouraging advices from south and east. Dealers are now buying on a basis of 6½c per pound for No. 1 inspected hides, which means 4½c per pound for frozen hides. The regular 5 pounds tare is not nearly sufficient to cover the amount of offal on hides now coming in and some buyers are docking 8 pounds. Sheepskins are not wanted at any price. No. 1 inspected hides, 5½c per pound delivered here; country hides, frozen, 4½c, bulls, 3½c; klips same as hides; sheep and lambskins, 40 to 70c each, slunk, 25 to 35c each.

**WOOL**—There is nothing doing in wool in this market. Advices from the east are to the effect that wool is a drug in the market and cannot be sold at reasonable prices. Warehouses are still loaded up with the clips of last year and the year before. The value of wool here to-day is about 8c to 8½c per pound for unwashed fleece and 12½c for washed.

**TALLOW**—Dealers are paying for No. 1 tallow at 4c per pound. No. 2 is worth 3c per pound. A good deal of tallow is being sold by country shippers in the rough, in which state it is worth 2c per pound.

**SENECA ROOT**—The best price that would be paid here now for clean, dry root is 30c per pound.

#### LIVE STOCK.

**CATTLE**—There is a good demand and prices hold firm at 4½c for choicest and range from 3½ to 4½c. Stockers are in good demand at from \$12 to \$16 per head for yearlings and \$20 to \$24 for two year olds.

**SHEEP**—Market nominal.

**HOGS**—The market for dressed loes is 2½c higher owing to good demand. Best hogs are worth \$5.50 per 100 lbs. Inferior lots are ruling at \$4.50 to \$5.25.

**MILCH COWS**—There is not much demand for cows and the market is almost nominal. From \$30 to \$45 about represents the value.

**HORSES**—Demand is improving as the season for spring work on the farms approaches and we note a large increase in the number of inquiries for work horses. Dealers report difficulty in securing enough of these as they are scarce in the southern markets from which Manitoba's supply has usually been drawn. Good heavy work horses are worth from \$300 to \$450 per team, according to weight and quality. There is some demand for drivers and light horses at from \$100 to \$150 each.

#### MORE NORTHWEST HORSES.

R. M. Bosworth, freight traffic manager of the Canadian Pacific Railway, has received cable advices from Archer Baker, European traffic manager of that company, that Lord Strathcona and Mount Royal has just completed arrangements with the Imperial government to send an officer of the war department to Canada to purchase horses in the Northwest for the troops in South Africa. The officer, it is believed, will probably sail from London, arriving in this country in the latter part of this month or early in April, and proceed direct from Montreal to the Territories. Between 1,500 and 2,000 animals will be bought and sent to Cape Town from Halifax as rapidly as the consignments are made up. The horses used by Strathcona's troops during the campaign, and which are now in service, gave such general satisfaction that the war department authorities have decided to secure more. Some of these, it is understood, will be used by Baden Powell's constabulary.

#### CANADIAN RUBBER MEN MEET.

A largely attended meeting of the rubber men of Canada was held at the Windsor hotel, Montreal, on Wednesday, under the presidency of H. S. C. Miner, president of the Grubby Rubber company, and of several other rubber and boot and shoe enterprises in this city. The report has been current for some days that a formation of a gigantic combination of rubber shoe men is in contemplation and opinion has been freely expressed that this meeting was preliminary to the adoption of important measures with

that end in view. Mr. Miner declared emphatically that no new combination with a view to extending the monopoly was under consideration. "The meetings," said Mr. Miner, "are being held simply for advancement of our own interests and for the protection of the capital invested."

## FINANCIAL

### WINNIPEG BANK CLEARINGS.

Returns for the Winnipeg Clearing House for the week ending Thursday, show as follows:

Week ending March 14 1901 \$1,610,611  
Corresponding week, 1900 1,587,074  
Corresponding week, 1899 1,480,780

The monthly totals are as follows:

	1901	1900	1899
Jan.	\$9,623,496	\$9,006,607	\$7,683,052
Feb.	7,158,270	6,702,640	6,290,471
Mar.	7,320,982	6,750,121	6,750,121
Apr.	7,091,519	6,016,431	6,016,431
May	9,702,579	7,472,835	7,472,835
June	9,012,084	8,211,710	8,211,710
July	9,385,425	8,160,535	8,160,535
Aug.	8,173,030	7,993,291	7,993,291
Sep.	7,320,147	8,291,159	8,291,159
Oct.	9,181,477	12,689,000	12,689,000
Nov.	11,618,985	14,435,219	14,435,219
Dec.	10,969,325	12,966,103	12,966,103
Totals	\$9,623,496	\$100,956,702	\$107,780,814

### Financial Notes.

Deposits in the Dominion government savings bank at Winnipeg during the month of February was \$15,607.00 and withdrawals \$15,263.81. Deposits exceeded withdrawals by \$343.17.

The Dominion government has issued the monthly bank statement for January. The amount of money in circulation decreased considerably during the month, although it was \$1,700,000 higher than in 1900. Loans and discounts increased \$5,832,000 during the month. Deposits on demand and notice increased largely.

A proposition is being made to have the Manitoba government guarantee the bonds of the city of Brandon to the amount of \$550,000, thus enabling that city to liquidate its liabilities and convert its present debt into one bearing a much lower rate of interest. The scheme seems reasonable as there is no question as to the ability and intention of Brandon to meet all its obligations if given reasonable time and current interest rates.

### Insurance Notes.

The initial steps in the formation of the proposed St. Lawrence Lloyds have been taken. F. H. Clergue and F. E. Clergue, of Sault Ste. Marie; E. V. Douglas and F. S. Lewis, of Philadelphia. Senators Mackay and Dandurand, Messrs. H. A. Allan, D. W. Campbell, Geo. E. Drummond, R. E. Redford and John Torrance, of Montreal, have petitioned the Ottawa government for incorporation for the new company, with a capital of \$5,000,000. They ask for power to do an inland navigation and transportation insurance to maintain and navigate on the lakes and rivers of Canada ice-breakers and wreck relieving steamers, and to carry on the usual business of a wrecking company.

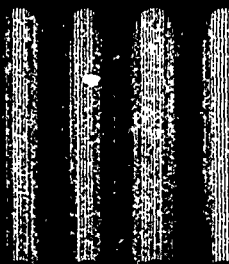
A reduction of 20c per cwt in all grades of Canadian refined sugars was made to-day, says the Globe of Monday. Granulated is now quoted at \$1.55 to \$1.53 per cwt., and yellows are selling at \$1.78 to \$1.53. The market followed the lead of the New York refiners, who reduced all grades of refined 20c per cwt. to-day. The price quoted in New York by the three leading refiners are now on a level, and the quotations here have been made to correspond.

The Chicago Cereal Co. has purchased property at Peterboro, Ont., and will proceed to erect a large factory thereon for the manufacture of cereal foods. They promise to employ 600 to 800 hands regularly and to consume 40,000 bushels of grain per day.

A sale of 3,374 bales of sheepskins was held at London, England, last week. There was a full attendance, but there was not as many continental buyers present as usual. Competition was fair at about January rates. The demand for crossbreds was less satisfactory and prices were 5 per cent. lower, mainly on medium fall wool grades.

# THE METALLIC ROOFING COMPANY LIMITED

## CORRUGATED



## IRON

# Toronto, CANADA.

## Good Reasons Why OUR CORRUGATED IRON

Is preferred by those who know.

We use only best Apollo or English sheets.

The corrugations are pressed one at a time—not rolled—fitting perfectly, both at ends and sides without waste.

No scale, pin holes or other defects are ever found in our goods.

The galvanized sheets are coated on both sides with all the galvanizing material that can adhere to them.

The painted sheets are coated on both sides with Sherwin-Williams best quality paint.

We furnish any size or gauge required—either curved or straight.

If you desire durable quality and certain economical satisfaction, send us your specifications or write for further information.

### Montreal Hardware Market.

Special to The Commercial.

Montreal, March 16, 1901  
1½" Iron—Canadian pig iron is worth \$17½¢, and Summerize \$22½¢.  
Bar Iron—Ruling price \$16½¢.  
Black Sheet—\$2.80 for 5 to 16 gauge.  
Galvanized Iron—No. 28 Queen's Head, \$4.85; 10¢ Apollo, 10½¢; or, \$4.85; 10¢, 10½¢.  
Ingot Tin—Lamb and Flag, 33½¢ per lb.

Lead—\$4.65.  
Lead Pipe—7c for ordinary and 7½c for composition waste, with 15 per cent off.  
Iron Pipe—Black pipe, 4, \$3 per 100 ft. 5, \$3; 6, \$3; 8, \$3.15; 1 in., \$4.50; 1½, \$6.10; 2, \$7.25; 2 in., \$9.75; Galvanized, 1, \$4.60; 2, \$5.25; 1 in., \$7.50; 1½, \$9.80; 2, \$11.75; 2 in., \$16.  
Terns Plates—\$4.85; 2½.

Swedish Iron—\$1.15.  
Coil Chain—No. 6, 11½¢; No. 5, 10¢; No. 4, 9¢; No. 3, 8¢; ½ in., 7½¢ per pound; 3-16, \$1.60; 3-16 exact, \$1.10; 3, \$1.20; 7-16, \$1.45; 3-16, 9-16, \$1.65; 5, \$1.75; 3, \$1.25; 2, \$1.20; 1 in., \$3.15. In carload lots an allowance of 10c is made.  
Sheet Zinc—\$2.65.  
Antimony—10c.  
Tinplates—\$4.50 for coke and \$4.75 for charcoal.

Canada Plate—2½, \$2.90; 60's, \$3; 77's, \$3.10; full polished, \$3.75, and galvanneal, \$4.00.  
Tool Steel—Black Diamond, 8c; less 1 p. 15c.

Steel—We quote: Sleighshoe, \$1.55; tire, \$1.45; spring, \$2.75; machinery, \$2.75; and toe-alk \$2.50.  
Barb Wire—\$3.05 f.o.b. Montreal in less than carlots.

Horse shoes—Iron shoes, light and medium pattern, No. 2 and larger, \$3.27; No. 1 and smaller, \$3.75; snow shoes, No. 2 and larger, \$3.75; No. 1 and smaller, \$4; X L steel shoes, all sizes, 1, 2, 3, 4, 5, 6, 7, 8, 9, 10, 11, 12, 13, 14, 15, 16, 17, 18, 19, 20, 21, 22, 23, 24, 25, 26, 27, 28, 29, 30, 31, 32, 33, 34, 35, 36, 37, 38, 39, 40, 41, 42, 43, 44, 45, 46, 47, 48, 49, 50, 51, 52, 53, 54, 55, 56, 57, 58, 59, 60, 61, 62, 63, 64, 65, 66, 67, 68, 69, 70, 71, 72, 73, 74, 75, 76, 77, 78, 79, 80, 81, 82, 83, 84, 85, 86, 87, 88, 89, 90, 91, 92, 93, 94, 95, 96, 97, 98, 99, 100, 101, 102, 103, 104, 105, 106, 107, 108, 109, 110, 111, 112, 113, 114, 115, 116, 117, 118, 119, 120, 121, 122, 123, 124, 125, 126, 127, 128, 129, 130, 131, 132, 133, 134, 135, 136, 137, 138, 139, 140, 141, 142, 143, 144, 145, 146, 147, 148, 149, 150, 151, 152, 153, 154, 155, 156, 157, 158, 159, 160, 161, 162, 163, 164, 165, 166, 167, 168, 169, 170, 171, 172, 173, 174, 175, 176, 177, 178, 179, 180, 181, 182, 183, 184, 185, 186, 187, 188, 189, 190, 191, 192, 193, 194, 195, 196, 197, 198, 199, 200, 201, 202, 203, 204, 205, 206, 207, 208, 209, 210, 211, 212, 213, 214, 215, 216, 217, 218, 219, 220, 221, 222, 223, 224, 225, 226, 227, 228, 229, 230, 231, 232, 233, 234, 235, 236, 237, 238, 239, 240, 241, 242, 243, 244, 245, 246, 247, 248, 249, 250, 251, 252, 253, 254, 255, 256, 257, 258, 259, 260, 261, 262, 263, 264, 265, 266, 267, 268, 269, 270, 271, 272, 273, 274, 275, 276, 277, 278, 279, 280, 281, 282, 283, 284, 285, 286, 287, 288, 289, 290, 291, 292, 293, 294, 295, 296, 297, 298, 299, 300, 301, 302, 303, 304, 305, 306, 307, 308, 309, 310, 311, 312, 313, 314, 315, 316, 317, 318, 319, 320, 321, 322, 323, 324, 325, 326, 327, 328, 329, 330, 331, 332, 333, 334, 335, 336, 337, 338, 339, 340, 341, 342, 343, 344, 345, 346, 347, 348, 349, 350, 351, 352, 353, 354, 355, 356, 357, 358, 359, 360, 361, 362, 363, 364, 365, 366, 367, 368, 369, 370, 371, 372, 373, 374, 375, 376, 377, 378, 379, 380, 381, 382, 383, 384, 385, 386, 387, 388, 389, 390, 391, 392, 393, 394, 395, 396, 397, 398, 399, 400, 401, 402, 403, 404, 405, 406, 407, 408, 409, 410, 411, 412, 413, 414, 415, 416, 417, 418, 419, 420, 421, 422, 423, 424, 425, 426, 427, 428, 429, 430, 431, 432, 433, 434, 435, 436, 437, 438, 439, 440, 441, 442, 443, 444, 445, 446, 447, 448, 449, 450, 451, 452, 453, 454, 455, 456, 457, 458, 459, 460, 461, 462, 463, 464, 465, 466, 467, 468, 469, 470, 471, 472, 473, 474, 475, 476, 477, 478, 479, 480, 481, 482, 483, 484, 485, 486, 487, 488, 489, 490, 491, 492, 493, 494, 495, 496, 497, 498, 499, 500, 501, 502, 503, 504, 505, 506, 507, 508, 509, 510, 511, 512, 513, 514, 515, 516, 517, 518, 519, 520, 521, 522, 523, 524, 525, 526, 527, 528, 529, 530, 531, 532, 533, 534, 535, 536, 537, 538, 539, 540, 541, 542, 543, 544, 545, 546, 547, 548, 549, 550, 551, 552, 553, 554, 555, 556, 557, 558, 559, 560, 561, 562, 563, 564, 565, 566, 567, 568, 569, 570, 571, 572, 573, 574, 575, 576, 577, 578, 579, 580, 581, 582, 583, 584, 585, 586, 587, 588, 589, 590, 591, 592, 593, 594, 595, 596, 597, 598, 599, 600, 601, 602, 603, 604, 605, 606, 607, 608, 609, 610, 611, 612, 613, 614, 615, 616, 617, 618, 619, 620, 621, 622, 623, 624, 625, 626, 627, 628, 629, 630, 631, 632, 633, 634, 635, 636, 637, 638, 639, 640, 641, 642, 643, 644, 645, 646, 647, 648, 649, 650, 651, 652, 653, 654, 655, 656, 657, 658, 659, 660, 661, 662, 663, 664, 665, 666, 667, 668, 669, 670, 671, 672, 673, 674, 675, 676, 677, 678, 679, 680, 681, 682, 683, 684, 685, 686, 687, 688, 689, 690, 691, 692, 693, 694, 695, 696, 697, 698, 699, 700, 701, 702, 703, 704, 705, 706, 707, 708, 709, 710, 711, 712, 713, 714, 715, 716, 717, 718, 719, 720, 721, 722, 723, 724, 725, 726, 727, 728, 729, 730, 731, 732, 733, 734, 735, 736, 737, 738, 739, 740, 741, 742, 743, 744, 745, 746, 747, 748, 749, 750, 751, 752, 753, 754, 755, 756, 757, 758, 759, 760, 761, 762, 763, 764, 765, 766, 767, 768, 769, 770, 771, 772, 773, 774, 775, 776, 777, 778, 779, 780, 781, 782, 783, 784, 785, 786, 787, 788, 789, 790, 791, 792, 793, 794, 795, 796, 797, 798, 799, 800, 801, 802, 803, 804, 805, 806, 807, 808, 809, 810, 811, 812, 813, 814, 815, 816, 817, 818, 819, 820, 821, 822, 823, 824, 825, 826, 827, 828, 829, 830, 831, 832, 833, 834, 835, 836, 837, 838, 839, 840, 841, 842, 843, 844, 845, 846, 847, 848, 849, 850, 851, 852, 853, 854, 855, 856, 857, 858, 859, 860, 861, 862, 863, 864, 865, 866, 867, 868, 869, 870, 871, 872, 873, 874, 875, 876, 877, 878, 879, 880, 881, 882, 883, 884, 885, 886, 887, 888, 889, 890, 891, 892, 893, 894, 895, 896, 897, 898, 899, 900, 901, 902, 903, 904, 905, 906, 907, 908, 909, 910, 911, 912, 913, 914, 915, 916, 917, 918, 919, 920, 921, 922, 923, 924, 925, 926, 927, 928, 929, 930, 931, 932, 933, 934, 935, 936, 937, 938, 939, 940, 941, 942, 943, 944, 945, 946, 947, 948, 949, 950, 951, 952, 953, 954, 955, 956, 957, 958, 959, 960, 961, 962, 963, 964, 965, 966, 967, 968, 969, 970, 971, 972, 973, 974, 975, 976, 977, 978, 979, 980, 981, 982, 983, 984, 985, 986, 987, 988, 989, 990, 991, 992, 993, 994, 995, 996, 997, 998, 999, 1000.

Horse Nails—11¢ each, 10 and 5 per cent on oral head, and 10 and 10 per cent on countersunk heads. " brands, discount 50 and 75 per cent.  
Wire Nails—\$2.25 for small and \$2.75 for carlots, f.o.b. Montreal.

Cut Nails—\$2.25 for small and \$2.25 for carlots; four barrel nails 25 per cent discount; coopers' nails, 50 per cent discount.  
Building paper—Dry sheathing, 70¢ per roll; cyclone dry, do., 42¢ per roll; straw do., 30¢; heavy straw do., \$1.40 per 1000; 1, X, L, dry sheathing, 6¢ per roll; cyclone tarred do., 50¢ per roll; tarred ordinary do., 40¢ per roll; tarred felt, \$1.70 per 1000; ready roofing, 2 ply, 80¢ per roll; 3 ply, \$1.05 per roll.

Cordage—Manila, 13c per lb for 7-16 and larger, sisal, 9c per lb for 7-16 and larger, and latayan 9c per lb. In small lots, 1c per lb higher is charged.

Glass—First break, \$2, second, \$2.10 for 30 feet; first break, 100 feet, \$3.90, second, \$4; third, \$1.50; fourth, \$1.75; fifth, \$3.25; sixth, \$3.75; and seventh, \$6.25.  
White Lead—Best brand, government standard, \$4.75; No. 1, \$6.00; No. 2, \$5.42; No. 3, \$5.25; and No. 4, \$4.87; all f.o.b. Montreal Terms, 3 per cent cash.  
Dry White Lead—\$5.50 in casks, kegs, \$5.75.

Red Lead—Casks, \$5.25; in kegs, \$5.50.  
White Zinc Paint—Pure, dry, 8c; No. 1, 6c; in oil, pure, 9c; No. 1, 7½c.  
Putty—Bulk, in barrels, \$2 per 100 lb; bulk, in less quantity, \$2.15; bladders, in barrels, \$2.20; barrels and over, open kegs or boxes, \$2.25; in tin, \$2.45; \$2.75; in less than 100 lb lots, \$1 f.o.b.  
Lined Oil—11½¢, 7c; hotted, 7c; in 5 to 9 barrels, 1c less; 10 to 20 barrel lots.

Turpentine—Single barrels, 2c; 2 to 4 barrels, 6c; 5 barrels and over, open terms.

Mixed paints—\$1.25; \$1.45 per gal.  
Scrap Metals—Heavy copper and wire, 12½¢ per lb; light copper, 12c; heavy brass, 12c; heavy yellow, 8½¢; light brass, 6½¢; lead, 2½¢; per lb; zinc, 2½¢; 2½¢; iron, No. 1 wrought, \$1.05; \$1.14 per gross ton; No. 1 cast, \$1.05; \$1.14; store plate, \$1.05; light iron, No. 2, \$1 a ton; malleable and steel, \$4.

Petroleum—Silver Star, 14¢; 14½¢; Imperial, Acme, 10¢; 10½¢; S.C. Acme, 18¢; 11c, and Pratt's Astral, 18¢; 11c.  
NUTS—Shelled Valencia almonds, 35c; shelled Jordan almonds, 42c; shelled deaux walnuts, 10¢; 11c; shelled walnuts, 24¢; 25c; Grenoble, 12¢; 13c, Sicily almonds 11¢; 12c.

A prominent soap manufacturer has said that the premium idea had assumed such dimensions that it put the soap business almost entirely in the shade and that it took a bigger staff to look after the premiums than it did to attend to the sale of the soap. He thought that all the companies were going through the same experience, and there is a wide-felt want to drop the present arrangements, which are made as the reward for collection of soap wrappers.

Four surveyors arrived in British Columbia on the 1st to commence work surveying the route for the projected Coast-Kootenay road. They will start work on Monday at Cascade, near the boundary, in the Kootenays.