

By referring to the Report of the Fruit Growers' Association for 1869, p. 77, a very good account of this insect may be found, and to show how great is their fecundity, it is there stated that from a single female there may be produced in seven generations the enormous number of *seven hundred and twenty million* descendants! And as there are from nine to eleven generations in a single season, it is easily seen that this enemy, though despicable in size, may yet be most formidable by reason of its numbers. It is less than the tenth part of an inch in length, and is developed from a tiny egg concealed in a crevice of the bark. It is stated that all the young produced from

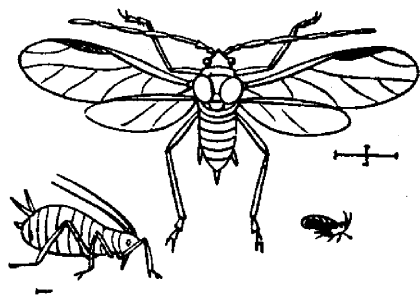


Fig. 8.

these eggs are females, which at the age of fourteen days begin to bring forth their young alive; and no eggs are laid until late in the fall, when a generation of males and females are produced, which are the parents of the eggs then deposited, to be hatched the following spring.

The accompanying cut, figure 8, shews the winged male and the wingless female greatly magnified.

"These facts do not afford much encouragement about the fruit prospects of the following year, do they?" No indeed, unless there is some remedy; for such countless myriads will soon suck out the life from the blossoms and inflict serious injury upon fine trees; and the artificial remedies, viz: (1) dusting with sulphur, (2) showering with soap suds, or (3) with a decoction of tobacco, are too tedious to be applied to an orchard of thousands of trees.

Fortunately the affairs of nature are in better hands than are those of the nation; and the Governor thereof takes better care of the interests of the fruit grower than could the wisest man or body of men. On every tree infested by the lice, I find dozens of Ladybirds, of that very common species the *Coccinella novem notata*, or Nine-dotted Ladybird. They are just now, (May 16th), hurrying about the trees, some of them engaged in devouring the small enemy, and some of them in depositing their bunches of yellow eggs, from which will soon issue larvæ more voracious than the parent.



Fig. 9.