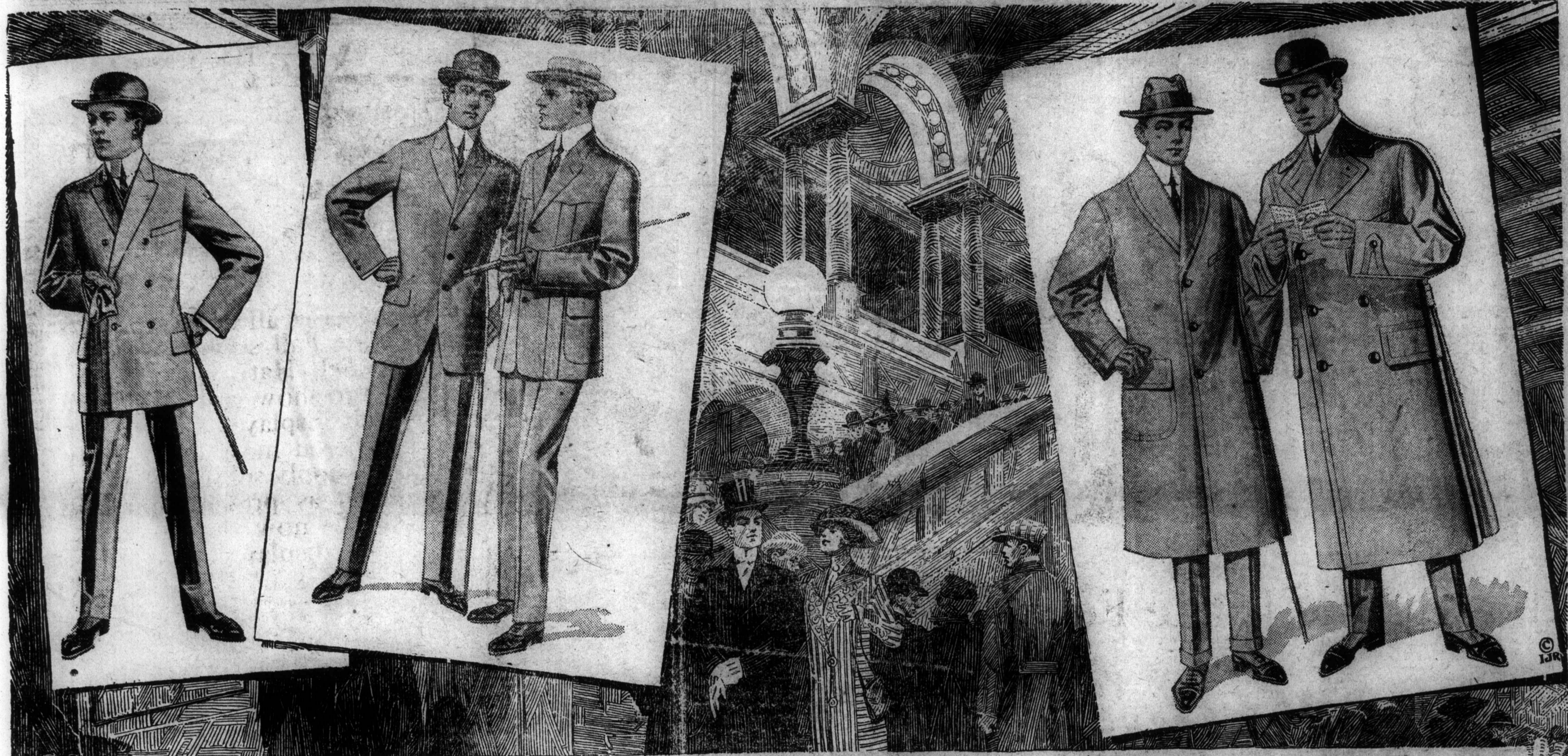


Season's
t in
lish
ats
OR MEN
d up with
of Derby
are now
These we
xtensively
es that are
inent, and
wn in im-

om the purest of
ding and has a
ced at \$2.50.
a manufacture.
sweat band, silk
riced at \$2.00.

Men
fall and winter

N



What Men Will Wear This Fall

By CHARLES W. GALLOWAY.

MEN'S outer apparel for Fall and Winter will be an aggregation of niceties, the equal to which has never before been witnessed in clothes for men. This is the almost unanimous opinion of clothiers and tailors alike, who have been giving forethought to these things. The graceful lines of contour, the elegance and fitness of the tailoring, in fact every element in the detail and construction of suits and overcoats for wear when the chilly blasts portend the approach of Fall and Winter, surpass the best efforts of former seasons in this direction.

In the past we have been trying to make our sartorial lines by padding and by artificial means and though we have accomplished marvels in this respect in the past, we have now discovered that the natural lines of the human body cannot well be improved upon. Some say it is not so much the discovery as it is that American tailoring skill has reached a point where it can do better, and more artistically utilize the lines of the human body, and in the simple draping accentuate all its good lines, rather than resort to artificial means, that has brought us to this general improvement.

As evidence of the statement that our tailoring skill is improving, it is pointed out that when the no padding garments were first created, it was said that very few manufacturing organizations would be able to make them. Now practically all makers are using the lines of the natural figure, getting away from the idea of padding, which requires skill. The result is that we have natural garments, patterned after the English idea, yet departing from these ideas to an extent which makes the garments distinctly American. Fall styles have these general characteristics, though those who cling to the vogues of the more conservative models can suit their individuality, and have no difficulty in finding in almost any up-to-date shop just the style that pleases them. That brings another thought. Men are giving more attention to the matter of individuality in clothes. They are more and more studying their own individuality in relation to their clothes and suiting the latter to their physical characteristics, rather than following blindly that which they interpret to be the style worn by many others.

The soft roll lapel coat is reported to be the leader in the metropolitan centers. If there is any noticeable tendency for or against the English idea, the characteristics of which are narrow shoulders, no padding, narrow sleeves, sometimes with narrow cuffs attached, the sleeves being a length that

permits a wide expanse of cuff to be seen below its end, it is toward it. These characteristics combined with the short coat averaging between twenty-nine and thirty and a half inches, compose the English coat, as it has been modified just enough to conform with the American idea and thus appeal to the American mind. This is certain to continue in vogue for this Fall in the larger centers, but it is not so pronounced in the medium sized towns which have a style of their own—one really just as authoritative as the metropolitan. All this has special reference to the sack suit, or as it is called across the water, the lounge suit.

While the style described may be said to lead in the metropolitan centers, a moderation of this style appears to be a close rival according to leading tailors and clothiers. The hat lapel and coat lengths ranging from 3 1/2 to 33 are characteristic of a model much in favor with the younger element as well as with many business men. This again emphasizes the thought expressed in an earlier paragraph namely, that the build of the individual is a factor in the selection of his style, and it is commonly stated that the so-called English style does not adapt itself to all the various builds. The other is quite as popular. Rumor has it that this style will be worn by young men possibly another season and some are bold enough to think that the

vogue may even begin this Fall. The double breasted style may be had in either, with two buttons or three buttons. In the three button model, the roll lapel extends past the top button so that it is really intended to be buttoned with two lower buttons. The most popular of these models are semi-form fitting. Another innovation of the Fall is the skeleton lined suit coat. This suit is made of a very heavy Scotch Tweed or Housenum, of practically the same construction of these materials which are so popular for summer wear, but they are woven very much heavier. They resemble in weight some of the materials of a decade ago such as our fathers wore. These materials to be made up with full linings would be too heavy, but with scant linings or none they are said to be ideal garments. With the short overcoat in vogue, and many men wearing knee length underwear the year round, the heavyweight trousers add greatly to the warmth of the body.

A season of dark materials is considered quite certain. The darker variations of grey, the mixtures with black and blue the leading colors will undoubtedly have the call. Cassimeres will continue to be the favorite materials with a sprinkling of worsteds in the higher priced ranges. Worsteds cannot be produced to be sold for the popular prices. Quite a variety of patterns will be comprised in Fall clothing. Every sort of check except the large check may now be had and the patterns in which hair lines appear are legion. All the patterns however may be said to be clear cut, contrasting, though modest. In overcoats, the garment in which we are seen most for this season, there are several good styles, and it would be difficult to state which of these styles are in the lead. There is the 40-inch coat with shawl collar, a coat that was popular a season ago and one which bids fair to be called for again. This style is principally to be had in chinillas. Other materials do not seem to adapt themselves to the style.

or Men
The success
into a clothes
me of life are
not dress the
the man who
has felt the
will be heard of

25

er; swell shades of
00, and \$25.00.

all new 50c

Tru-Knit, both in

sizes 9 25c

g House
thiers

1913—FALL AND WINTER—1914

Ordered Clothing

—ANONUNCEMENT—

We invite you to come and see our fall display of Fancy Tweed Suitings and Overcoatings. You'll surely be pleased with it. It will be time well spent. We have imported from the largest and best English woollen manufacturers our complete stock of fall woolsens and buying direct as we do, it means a considerable saving for you.

You will find here a choice that makes buying easy. Classy brown, Heather mixtures, greys, blue-greys, olive, navy blue and black serges; in the newest and most favored materials.

Every garment is strictly "Union Made" on our own premises by expert Union Tailors.

Style, quality, fit and workmanship guaranteed satisfactory or you don't pay. That's fair, isn't it.

For your fall suit and overcoat, call and see these goods. You'll have no disappointments here.

Open Saturday evenings until 11 p.m.

WILES & QUINLAN
THE "BIG 22" CLOTHING HOUSE

THE CORRECT DRESS CHART

DAY DRESS										
OCCASION	COAT AND OVERCOAT	WAISTCOAT	TROUSERS	HAT	SHIRT AND CUFFS	COLLAR	CRAVAT	GLOVES	BOOTS	JEWELRY
DAY WEDDING, AFTERNOON CALL AND MATINEE RECEPTION	Morning Coat, Chesterfield or Fawn Overcoat	To Match Coat with White Edging	Striped Worsteds of Dark Grey or to Match Coat	High Silk with Broad Felt Band	Stiff or Pleated White with Cuffs Attached	Poke or Small Tabbed Wing	Pearl Ascot or Once-over	Pearl Buttoned or Gled to Match Cravat	Patent Leather Buttoned Cloth or Kid Tops	Pearl or Moonstone Links, Studs and Cravat Pins
BUSINESS, LOUNGE MORNING WEAR	Jacket, Walking Coat, Chesterfield Overcoat	To Match Coat or of fancy fabric	To Match Jacket	Derby or Soft	Stiff or Pleated White with Cuffs Attached	Fold or Wing	Four-in-hand or Tie	Chamois or Tan Caps	Laced Calf or Patent High or Low	Gold Jeweled Links and Gold Chain
MOTORING, GOLF DRIVING COUNTRY	Norfolk or Jacket, Fawn or Chesterfield Overcoat	To Match Jacket, Flannel or Knitted	Flannel or to Match Jacket	Woolen or Fur Cap or Soft	Flannel or Silk with Soft Cuffs	Fold Outing or Self-Attached Collar or Kerchief	Four-in-hand or Stock or Kerchief	Chamois or Tan Cap or Fur	Laced Calf or Patent High or Low	Pearl or Gold Links, Studs and Cravat Pins
AFTERNOON TEA, CHURCH AND PROMENADE	Morning Coat, Chesterfield or Fawn Overcoat	To Match Coat or of Fancy Fabric	Grey Striped Worsteds to Match Coat	High Silk with Broad Felt Band	Stiff or Pleated White or Fancy Cuffs Attached	Fold or Wing	Four-in-hand or Once-over	Studs, Chamois or Reindeer	Patent Leather or Buttoned Cloth or Kid Tops	Gold or Jeweled Links, Studs and Cravat Pins
EVENING DRESS										
EVENING WEDDING, BALL, RECEPTION, FORMAL DINNER AND THEATRE	Swallowtail Cape, Tailor Made Fur, Chesterfield Overcoat	White, Single Breasted or of Plain or Linen	Same Material as Coat with Outer Seams	High Silk with Broad Felt Band at Theatre	Stiff or Pleated White with Cuffs Attached	Poke, Small Tabbed Wing or Lapfront	White Tie of Plain or Figured, Patent or Linen	White Gled or Black with Reindeer or White Cape for Theatre	Patent Leather Buttoned Cloth or Kid Tops Patent Leather Pumps	Pearl or Moonstone Links and Studs, Cravat Pins and Chain
INFORMAL DINNER, CLUB STAY, AT HOME DINNER	Jacket, Chesterfield or Fawn Overcoat	Black or Black-and-White Linen or of Plain or Single Breasted	Same Material as Suit with plain Outer Seams	Black Derby or Soft	Plaid or Linen or Fawn with Cuffs Attached	Fold or Wing	Broad End Black or Black-and-White Silk Tie	Chamois or Reindeer	Dull Calf Laced Tops or Gummed Pumps	Gold, Jeweled Links and Studs, Gold Tie Chain

Copyright 1913 by The Haberdasher Company

Courier Want Ads. For Results