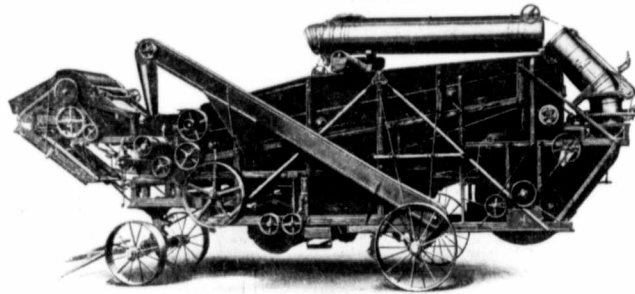


HUBER



THE HUBER THRESHER

Noted for its Good Cleaning and for Saving the Grain

The Huber machine has a cylinder of large diameter and heavy construction. Cylinder and concave spikes are so placed as to give the least clearance necessary and allow grain to pass between. This prevents heads going through with the grain in them. The shaft is supported in self-adjusting boxes. Even if the level of machine is disturbed, the cylinder is bound to run true and even.

Cylinder shaft bearings are lubricated automatically. A tank for oil is placed on top of machine at front. Two small pipes lead from this tank to oil cup over shaft bearing at each end. Feed is by gravity. If the oil in tank is replenished at beginning of each day, cylinder shaft bearings need no further attention.

The great success of the Huber in handling various kinds of grain is made possible by a combination of several excellent features of construction. The two beaters, immediately back of cylinder and both revolving toward it, pound the straw from opposite sides, loosening up the mass, and beating the threshed grain down through the grates to grain bottom.

Back of beaters, the deflector catches fly-

ing grain from the cylinder, and deflects it downward out of the straw.

The vibrating racks are so built that as the straw travels back from the beaters, it is elevated and violently shaken by the end thrust. Any loose grain remaining in the straw is separated here, and falls through the racks. When the straw passes on to the stacker, the grain has been left behind. The arrangement of riddles, fan and shoe, finishes the thorough cleaning of the grain before it leaves the spout.

All belts on the Huber machine are kept at proper tension by automatic tighteners. This insures every part running with right, steady motion. The thresher will give longer service, and belts will not wear out so quickly, because this automatic adjustment prevents slipping.

Every attachment designed to save labor and increase the capacity of the thresher is provided for the Huber machine.

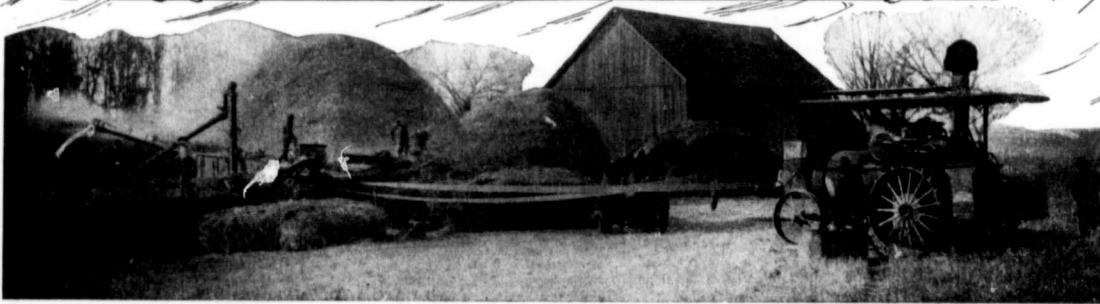
For power to operate it, you have your choice of the Gas Tractor in three sizes, or the Steam Tractor in five sizes.

Machinery and parts in stock at Winnipeg.

THE HUBER MANUFACTURING CO.,

Cor. Logan and Arlington, WINNIPEG, MAN.

Home Office and Factory, - - - - - Marion, Ohio, U.S.A.



You saw this advertisement in this magazine. Don't forget to say so when writing.