

meter panel, which, as will be seen from the figure, has two electrostatic meters, and a plugging arrangement for paralleling and for plugging on to the three bars.

*Transformers.*—The rotary transformers (Fig. 2) are two-pole machines of overtape design, with double wound armatures running

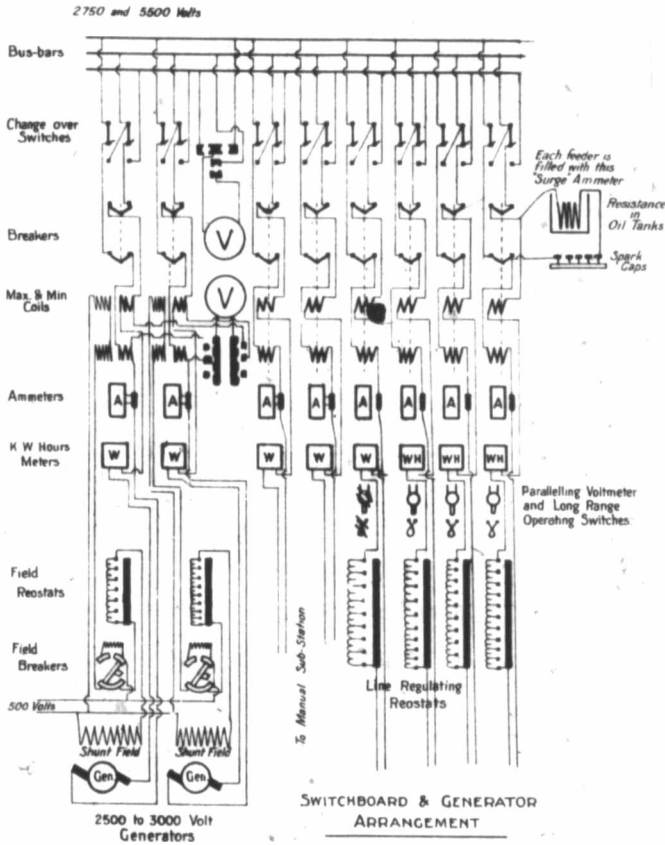


Fig. 1

in a single field, and have copper brushes. They run at 500 R.P.M., and have a fixed ratio of 5 to 1. The regulating is done by the resistance in the high-tension circuit. They are started up as series motors, and for this purpose are fitted with a small series field, which works in conjunction with a short-circuiting switch.