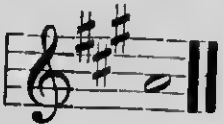


is two sharps, F and C,



for key of D Major or B Minor.

is three sharps, F, C and G,



for key of A Major or F sharp Minor.

is four sharps, F, C, G and D,



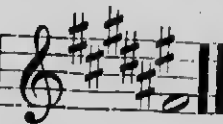
for key of E Major or C sharp Minor.

is five sharps, F, C, G, D, and A,



for key of B Major or G sharp Minor.

is six sharps, F, C, G, D, A, and E,



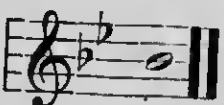
for key of F sharp Major or D sharp Minor.

is one flat, B,



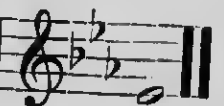
for key of F Major or D Minor.

is two flats B and E,,



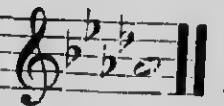
for key of B flat Major or G Minor.

is three flats, B, E, and A,



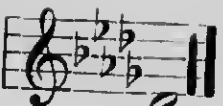
for key of E flat Major or C Minor.

is four flats B, E, A, and D,



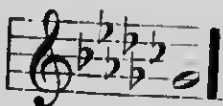
for key of A flat Major or F Minor.

is five flats, B, E, A, D, and G,



for key of D flat Major or B flat Minor.

is six flats, B, E, A, D, G, and C,



for key of G flat Major or E flat Minor.

A Double Whole Note, or Breve.



A Whole Note, or Semi-breve.



A Half Note, or Minim.



A Quarter Note, or Crotchet.



An Eighth Note, or Quaver.



A Sixteenth Note, or Semi-quaver.



A Thirty-second Note, or Demi-semi-quaver.



A Double Whole Rest.



A Whole Rest.



A Half Rest.



A Quarter Rest.



or



An Eighth Rest.



A Sixteenth Rest.



A Thirty-second Rest.

