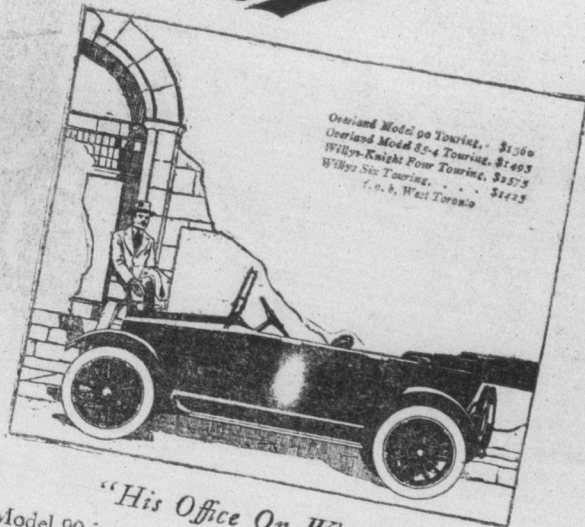


Overland



"His Office On Wheels"

Model 90 is a business man's car—a time saver—a money maker. It has riding comfort, power, good looks and economy to brag about. A large percentage of the Overland owners drive the Model 90 and are as proud of it as we are. Get one—you will like it.

Overland advantages in appearance, performance, comfort and price, plus Overland service, mean lasting satisfaction in the use of your car.

Willys-Overland, Limited, Head Office and Works, West Toronto
Branches: Montreal, Winnipeg, Regina

REPUBLIC QUALITY IS RESPONSIBLE FOR REPUBLIC SUPREMACY

Republic Trucks are quality trucks. Regardless of price you can not buy better quality or more satisfactory truck service. Republic quality has a special significance to the buyer of hauling power. It enables him to buy, at a fair price, motor trucks that will prove fully dependable for every hauling requirement. At any speed, on any kind of road, in any kind of weather the efficiency of the Torbensen Internal Gear Drive exceeds

that of any other form of truck driving power. The Torbensen Internal Gear Drive axle permits 45 per cent. greater road clearance than any other shaft drive axle. It saves 20 per cent. in tire depreciation on the rear tires. It means big economies on the line, oil and all upkeep expenses. It delivers 92 per cent. of the motor power to the wheels. We know of no other type of shaft drive that delivers as much.

There's a Republic Truck to Fit YOUR Business

Whether you are a merchant, manufacturer, contractor, farmer—or whatever your line—you will find a Republic Truck that will fill all the requirements of your particular hauling problem.

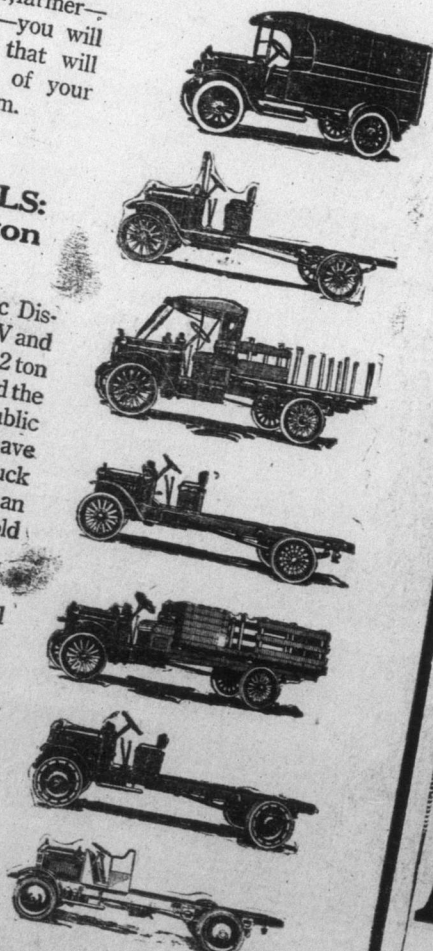
SEVEN MODELS: 3/4 ton to 5 ton

From the 3/4 ton Republic Dispatch to the big 5 ton Model V and all the way between in 1 ton, 2 ton and 3 1/2 ton models, you will find the same sturdy, dependable Republic features—the features that have proved so satisfactory with truck users everywhere that more than twice as many Republics are sold as any other make.

Every Republic has the Internal Gear Drive which delivers from 12% to 26% more of the motor power to the wheels than any other form of drive.

You should know more about Republics. Let us call and talk over your hauling problems with you. We can help you in selecting the right truck for your business.

Let us demonstrate to you the advantages of the INTERNAL GEAR DRIVE



Travel the Overland Way

For either business or pleasure
With each succeeding year the public appreciation of Overland cars becomes more prevalent as increasing numbers of people learn to know the ideal to which the vast Willys-Overland resources are dedicated. This ideal goes far beyond the production of an efficient Motor Car—even of an economically efficient motor car—it comprehends every factor, including Nation-Wide service facilities, that makes for the complete satisfaction of owners. Sales of the Overland Model 90 cars alone now number more than one hundred and fifteen thousand.

Canada's Standard Car

REVISED PRICES

The assurance of material for quantity production of McLaughlin cars enables us to establish the following prices on the various McLaughlin models, effective January 1st, 1919.

These prices will remain in force until July 1st, 1919.

LIGHT SIXES

H-62 Roadster	\$1500
H-62 Special	1575
H-63 Touring	1500
H-63 Special	1575
H-62 Coupe	2075
H-63 Sedan	2225

MASTER SIXES

H-44 Roadster	\$1925
H-44 Special	2050
H-44 Extra Special	2090
H-45 Touring	1925
H-45 Special	2050
H-45 Extra Special	2090
H-46 Coupe	2625
H-49 Seven passenger	2365

ALL PRICES SUBJECT TO WAR TAX

THE McLAUGHLIN MOTOR CAR CO., Limited
OSHAWA, ONTARIO

F. O. B. OSHAWA

McLaughlin Light Sixes

The McLaughlin Light Six has established a record for economical transportation. The six cylinder valve-in-head motor develops remarkable power with low gasoline consumption.

The car is sturdy throughout and built of the finest materials to withstand all tests of Canadian highway and climatic condition.

The flexibility, ease of control, speed if desired, and extreme power have brought the McLaughlin Light Six into favor in all parts of the Dominion.

The McLaughlin Light Six Touring or Roadster develops more power per pound of car weight than any car on the Canadian market.

A. LOCKHART & CO.

DISTRIBUTORS

22-24 South Queen St. KITCHENER. Phone 597.

RE House sale

120 W

Reac

SA

is not cars, b standa units highes construtor th Arrow tures 1 either see ou