

## BIG DEFICIT IN BRITISH RAILWAY ADMINISTRATION

Will Be Approximately 54-  
500,000 Pounds — Cost of  
Material and Maintenance  
Shows Great Increase.

London, Sept. 2.—(By Canadian Press)—An announcement from the Ministry of transport states that there is an apparent deficit of 54,500,000 pounds sterling to accrue to the exchequer from the state control of railways in Great Britain and Ireland during the current fiscal year to end March 31, 1921.

Among the principal items of per annum increased expenditure, as figured from last October, when the question of rates revision was referred to the Railway Rates Advisory Committee, are: Cost of materials, \$12,000,000; coal, \$3,500,000; hire of rolling stock, \$750,000; rates, taxes and compensation, \$3,200,000; while \$24,800,000 are estimated for increased labor costs.

The ministry of transport has requested the railway rates advisory committee to suggest increases in tariffs for various railway services which will wipe out the deficiency by the close of the following June. The last increase in rates was ordered in the latter part of December, 1919.

## FALLING OFF IN BRITISH MINE PRODUCTION

Coal Shows Only Increase  
and That Is Declared to Be  
Inappreciable.

London, Sept. 3.—(By Canadian Press)—The preliminary figures regarding the output from British mines, which have been issued for 1919, have aroused particular interest here because of the struggle in progress between the coal miners and the government. While they are not a complete record of the mine output, they are substantially complete for coal, copper, lead and zinc. Despite the number of men demobilized in 1919, which increased the number of employees in mines by no fewer than 183,260, the yield of minerals, with the exception of coal, is generally lower, while in the case of coal the increase was inappreciable.

The returns bring out the reduced per capita production of miners employed under the coal mines act. The number of men employed in 1919 exceeded those employed in the same industry in 1918 by 64,425, yet the output of 1919 was only 229,748,196 tons, compared with 297,430,478 tons in 1918. The contrast is striking when this is worked out in terms of production per workman. In 1918 this was 392 tons per man underground, while in 1919 it was only 253 tons.

## ECONOMY CAMPAIGN ON IN SOUTH AFRICA

Cape Town, South Africa, Sept. 3.—(By Canadian Press)—Several economy and thrift campaigns have been organized in cities and towns throughout South Africa in an effort to bring down the prevailing high prices for food and



## Upland Coffee

Coffee, grown in the cool, dry mountain plantations, is rich in those qualities which give the wonderful fragrance and flavor to

## SEAL BRAND

—the perfect Coffee. Blended and roasted and put into airtight packages, its goodness and exhilarating aroma sealed safe from the deteriorating air.

Ground and fine-ground. In 1/2, 1 and 2-lb. tins. At good dealers everywhere. Write for "Perfect Coffee—Perfectly Made"—free on request.



## Baby's Own Soap

Keeps the skin  
healthy and sweet.

It's Best for Baby  
and Best for You.

ALBERT SOAPS LIMITED, Mtl., Montreal. D-720

clothing. Most of the organizers are women, and their main purpose is to induce greater simplicity in the make, material and number of dresses, and to aim at a simpler standard of living.

As an incentive towards thrift, some 150 savings clubs have been formed in the Cape peninsula for the purpose of purchasing United Government Certificates. Their popularity is spreading rapidly.

## The Modern Table Drink

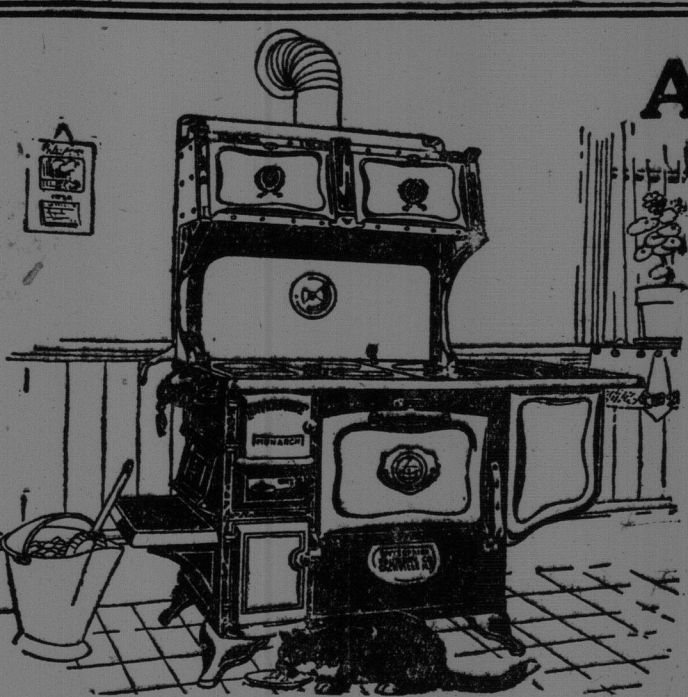
A combination of good  
flavor, economy, efficiency  
and health satisfaction

## INSTANT POSTUM

This pure and wholesome  
beverage contains none of  
coffee's harmful ingredients.  
Especially valuable in  
families with children.

Sold by all Grocers

Canadian Postum Cereal Co Ltd. Windsor Ont.



## A Blanket of Heat

When in use, the oven of the Enterprise Monarch Steel Range is clothed in a blanket of heat. Not one degree escapes without doing its work. From top to bottom, bottom to top, side to side and back to front, heat is poured on the article you are baking. Delicious cooking is the result. Your roasts are done to a turn—brimful of juice and flavor; your pastry just melts in the mouth.

## ENTERPRISE MONARCH STEEL RANGE

The oven is one reason why you should see your dealer about the Enterprise Monarch Steel Range. Beauty, convenience and durability are others. You cannot buy a handsomer range—you cannot buy one more up-to-date or lasting. See the Enterprise dealer. He will tell you all about it. Also write for copy of our illustrated booklet. It's free.

The Enterprise Foundry Co. Limited - Sackville, N.B.  
Makers of the well-known lines of Enterprise  
Stoves, Ranges and Furnaces.

## HUGE SERPENT OF STONE IN OHIO

Supposed Religious Symbol  
of Ancient People Is 1,300  
Feet Long — Now Centre  
of Park.

(By Associated Press.)

West Union, O., Sept. 3.—A great serpent 1,300 feet long, built of earth and stone, a symbol of the religion of ancient peoples, stands a few miles from here as the most interesting and important earthwork left by the mound builders of Ohio.

Situated in a rather secluded spot, supposedly selected by the mound builders for privacy in performing their ancient rites, the massive reptile winds, gracefully back from a glen to higher land. The serpent's head rests upon a rock platform which presents a precipitous face to the descending sun and is about 100 feet high. The jaws of the mouth are widely extended in the act of swallowing an egg, represented by an oval ridge of earth.

As the mound builders shaped the body they caused it to make four large folds as it tapered back to the tail, which is folded in three complete and close coils.

The land about this curious relic of primitive days is low at the head, but gradually ascends toward the tail. There is ample room on all sides for a gathering of many people and the relief is expressed that the idol worshippers gathered on all sides of their altar to pour forth praise, or beseech forgiveness and blessings from the beautifully hideous god of their own creation.

"The Serpent Mound," was purchased by Professor F. W. Putnam, of the Peabody Museum, Cambridge, Mass., in 1887, along with about 70 acres of adjacent land and shortly afterward a beautiful public park was laid out on the ground. Thus in present days the spot of reverence sacred to the people who preceded civilization in the nation is used as a playground for picnickers and pleasure seekers. The deed to the land is vested in the museum attached to Harvard University.

Those who have made a study of the work of the mound builders have estimated that in Ohio alone there are over 10,000 mounds and from 1,000 to 2,000 enclosures standing as monuments to their work. By the study of ancient implements and burial places found in and near these mystery hills it has been found possible to form a conception of their life.

Cause and Effect.  
Magistrate—Do you mean to say that such a physical wreck as your husband gave you that black eye?  
Plaintiff—Your Worship, 'e wasn't a physical wreck until 'e gave me the black eye.—London Opinion.

## TO EXPLOIT THE BELGIAN CONGO FOR PULPWOOD

Canada and Scandinavia May  
Have to Look to Laurels—  
Big Plant Planned.

Brussels, Sept. 2.—(By Canadian Press)

—The supremacy of Canada and the Scandinavian countries in the pulp and paper industry may be challenged soon by the Belgian Congo. Papyrus, which grows in great abundance in the Congo, is to be exploited by a large company which has been granted a concession. It is planned to establish a large plant, costing two and a half million francs,

which will have an initial production of 20,000 tons of pulp.

The papyrus of the Congo has shown on analysis 87 per cent. of cellulose. After research and experiments, a process has been discovered for bleaching the plants. This had been vainly sought for fifty years. The papyrus grows principally along the lower Lualaba River, near the lakes of Kabuli, Sjemba, Kisali, and Noaga.

## STRIKES MAY COME AND GO BUT HONEY BEE REMAINS ON JOB

London, Sept. 2.—(By Canadian Press)

—The workers in the honey industry are declared to be the most conscientious and industrious to be found in Great Britain today, and practically the only ones who have not been afflicted with the strike fever. In spite of changeable

## HAVE YOU A BABY IN YOUR HOME?

Are You Sure It is in the Best Condition Physically to Undergo Development Into Normal Childhood?

IF YOU HAVE ANY DOUBT in this important matter—if you desire to have your baby scientifically examined

MAKE APPLICATION NOW FOR THE  
BABY CLINIC AT THE ST. JOHN  
EXHIBITION

In Connection With the Child Welfare Exhibit and Demonstration.

A PRIVATE MATTER BETWEEN YOU, THE DOCTORS AND NURSES

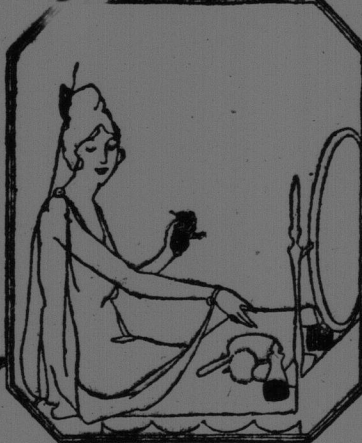
Fill out this form and send to Mrs. A. W. Estey, Secretary, 321 Douglas Avenue, St. John, N. B.

(NAME) .....

(ADDRESS) .....

The Secretary Will Reply Setting Day and Hour for The Examination. e.o.d.—10.

PARIS LONDON VIVAUDOU MONTREAL NEW YORK



## MAVIS

Before the opera—a few drops of Mavis Toilet water and a sprinkle of talc—and you are ready to motor off.

Mavis talc will preserve all the youthful charm of your skin. Its cool, soothing touch will really delight you.

No woman's dressing table is complete without these two delightful adjuncts.

Irresistible!

weather, the bees are reported to have worked, and to be still working well this season, and a particularly good harvest of honey is foreshadowed. The ministry of agriculture is endeavoring these have been received to date.

## THE ECONOMY STORE OF ST. JOHN

Footwear is Footwear no matter where purchased, but there is such a thing as "BETTER VALUE," and we honestly believe EXHIBITION VISITORS to the city will find this store a most advantageous place to buy Shoes. We have always specialized on Quality and lower expense permits us to quote Extra Attractive Values.

We might remind the Mothers that we have a Splendid Variety of SCHOOL BOOTS at Very Special Prices for the Reopening.

JUST TO GIVE YOU AN IDEA—

LADIES' OXFORDS  
Black or Tan, Medium or High Heel  
From \$4.00 up

LADIES' BOOTS  
Many Varieties at Prices  
From \$5.00 to \$12.00

MEN'S SPECIAL BOOTS  
Brown Leather, Goodyear Welt, Regular \$9  
Special Exhibition Week \$6.50

MISSSES' BLACK HIGH CUT BOOTS  
Special \$3.50

BOYS' BOOTS  
Sizes 11, 12, 13, Regular \$4.00  
Special \$2.95

BOYS' BOOTS  
Sizes 1 to 5  
Special \$3.50

We Carry a Splendid Assortment of the Better Lines of Footwear

—STORE RIGHT ON THE CAR LINE—  
OPEN EVENINGS

New York Shoe Store  
655 Main Street

MUTT AND JEFF—JEFF ADDS A LITTLE TO HIS FUND OF KNOWLEDGE

By "BUD" FISHER

