

# Today the Big Clearance Sale at Simpson's Includes 400 Women's Better Grade Suits at Half Price

These four hundred suits are taken right out of stock and comprise our best suits of the season both as to styles and quality. They include Serges, Gabardines, Poiret Twills, Yo-San Silks, Khaki-Kool Silks, Wool Poplins and Serges. In seven groups as follows:

Regular \$40.00 Suits, half price . . . . . 20.00	Regular \$57.50 Suits, half price . . . . . 28.75	Regular \$85.00 Suits, half price . . . . . 42.50
Regular \$45.00 Suits, half price . . . . . 22.50	Regular \$65.00 Suits, half price . . . . . 32.50	Regular \$100.00 Suits, half price . . . . . 50.00
		Regular \$125.00 Suits, half price . . . . . 62.50

## Misses' Coats at Half Price

We are taking 100 of our regular \$12.50 to \$27.50 coats, in the Misses' Department, and reducing the price to exactly half. They are of serges, coverts and country club cloths, made in attractive styles, with large collars, novelty pockets, smart belts and nice linings. Sizes 14 to 20 years. Regular prices \$12.50 to \$27.50. Today at half price, \$6.25 to \$13.75.

Also in the Misses' Section, 50 Coats of tweeds, serges and corduroys. On special sale today at . . . . . 5.75

## Women's New York Coats \$15.00

250 Women's Coats, in dozens of the very best styles shown this season, in pleated, flaring and belted effects; deep collars and fancy pockets, in velours, poplins, serges or coverts; shades black, navy, sand, olive, tan, mustard, gold and assorted greens. Values \$22.50 to \$27.50. Today, special at \$15.00

**Raincoats Half Price**  
In tweed effects, with raglan sleeves and convertible collar. All misses' sizes. Regular \$9.00. Today, half price . . . . . 4.50  
And Girls' Raincoats, in checks and in navy, with cap and school bag to match. Sizes 8, 10, 12 and 14 years. Regular \$4.50. Today, half price . . . . . 2.25

**Girls' Tub Dresses 49c**  
No Phone or C. O. D. Orders  
500 Girls' Gingham Dresses, in striped and plain effects, in good washable patterns; all made in good style, and are ideal dresses for school wear. Sizes 6 to 14 years. Today, each . . . . . 49c



**Women's Summer Dresses**  
Linen, cotton gabardines and linen and voile combinations in plain and striped effects, featuring plain and novelty styles. Colors white, cadet, helio, pink and Copen. Sizes 34 to 46. Dainty new styles. Prices \$8.50 to \$20.00.

**Store Hours During May**  
Including Saturdays  
8.30 to 5.30



## 1000 Pairs Corsets

\$1.50, \$1.75, \$2.00 and \$2.25 Corsets  
**95c**  
They are odd sizes and slightly soiled corsets of such popular makes as D. & A., C. C. a la Grace, and E. T. Sizes 19 to 30. All fashionable models. On sale today at . . . . . 95c

**1,000 Corset Covers at Half Price, 17c**  
Made of fine white cotton, with round neck, and dainty yoke of Swiss embroidery, in floral design. Sizes 34 to 42. Regular \$1.75. Today . . . . . 17c  
**\$1.00 Nightgowns, Today 59c**  
Cotton crepe, just the thing for the summer holidays, as they require no ironing; made in a dainty slip-over style, with round neck and short kimono sleeves; French Val lace trimming. Sizes 36, 38, 40 and 42. Regular \$1.00. Today . . . . . 59c  
**\$2.50 Underskirts, Today \$1.49**  
Made of good quality white nainsook, in a good-fitting gored style, with non-tearable placket and draw tape; bottoms have frills of Swiss embroidery; scalloped edges and cotton underlay. Sizes 36, 38, 40 and 42. Regular \$2.50. Today . . . . . 1.49

**Umbrella Drawers, Regular \$1.35, for 79c**  
Made of extra fine nainsook, in wide umbrella style, with handsome deep frills of Swiss embroidery headed with insertion to match; both styles. Sizes 23, 25 and 27 inches. Regular \$1.35. Today, special . . . . . 79c  
**\$3.50 Glove Silk Bloomers, \$1.75**  
Made of good weight pure silk, in a knicker style, with elastic knee and waist; the crotch is reinforced double ply; black only. Sizes 34 to 42. Regular price \$3.50. Half price today . . . . . 1.75  
**\$4.50 Glove Silk Combinations, \$2.95**  
Made of heavy quality silk; low neck and no sleeve style; reinforced under the arms and crotch. Colors white or flesh pink. Sizes 34 to 42. Regular \$4.50. Today . . . . . 2.95

## Continuing the Sale of Women's Millinery at Big Savings

**Today's Sale of Sport Hats is of First Importance**  
A large number of these have been cleared to us by two very large manufacturers, and they represent the leading shapes and styles of the coming sport season; there are fine banded Panamas, in natural, white and in colors; colored Hinokis, natural, white or colored Javas, Manilas or Bowens. This is an extraordinarily good variety of jaunty styles that we are enabled to offer early in the season at these two very popular prices. On sale today at . . . . . 3.25 and 1.75

**1000 New Shapes at \$1.19**  
Another big lot that we have just purchased, comprising real good quality hats in milan, tagels, lisere or black or white milans. All good shapes, no extreme styles. Regular \$2.25 to \$3.00 values. Today at . . . . . 1.19

**Hats Trimmed Free**  
All hats bought in the department today, along with the trimmings, will be trimmed free of charge. Get your orders in in the morning to ensure delivery the same day.

**Bunches of New Flowers**  
Thousands of bunches in a large shipment that have come in late from Europe, and which we have marked very low for this clearing sale. Prices from 25c, 35c, 45c, 50c to 65c each. Displayed on tables.

## The Home Decoration Sale of Wall Papers

### Includes 10,000 Rolls of Imported Oatmeal Papers

**Heavy Duplex Stock—Note the Range of Colors**  
30 inches wide, 5-yard roll; dark brown, tan, dark blue, deep buff, green. Today . . . . . 14c  
30 inches wide, 5-yard roll; light buff, putty, pale blue. Today at . . . . . 10 1/2c  
**Dainty Bedroom Papers, Regular 25c, for 11c**  
Floral stripes in pretty shades of pink, blue, yellow and mixed colorings. These papers have cut-out borders to match, so much in vogue.  
Wall Papers, regular 25c. A single roll of . . . . . 11c  
Floral Cut-out Borders to match. Regular 8c a yard. Today . . . . . 3c  
**50c Fabric Weave Papers, 19c.**  
American Fabric Weave Papers for living-rooms and dining-rooms, embossed and overprinted effects; blue, green, tan and grey colorings. Regular 50c. Today, single roll, at . . . . . 19c  
**White Ceiling Papers, Regular 20c, on Sale 9c**  
White and cream grounds, with small dot and square patterns, in mica embossed stock. Regular 20c. Today, a single roll . . . . . 9c

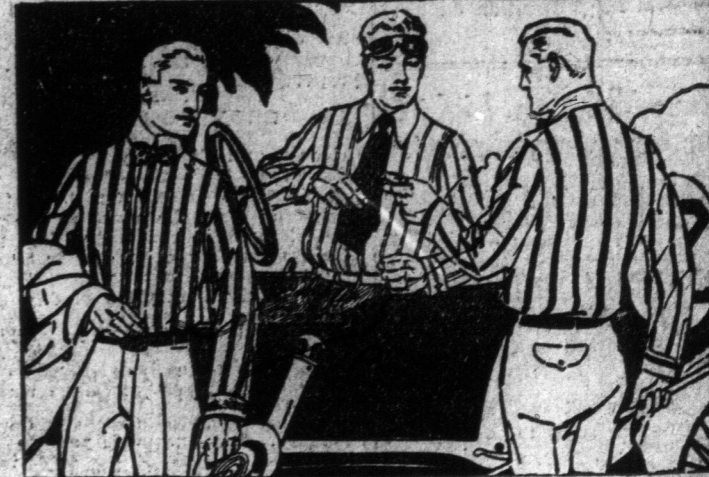


**Cut-out Borders, Panel Borders, Scenic Borders**  
Thousands of yards of pretty and decorative borders, suitable to use with oatmeal wall papers for all styles of decorating. Regular 8c to 25c a yard. Today, a yard . . . . . 2c  
**Tapestry Wall Papers, Regular 20c, on Sale at 7c**  
Brown and tan grounds, stripe design, with leaves and conventional floral pattern worked in richer tones. Regular 20c. Today, a single roll . . . . . 7c  
18-inch Borders to match. Regular 8c a yard, for . . . . . 3c  
**Good Quality Paint Brushes, 19c Each**  
2 inches wide, selected black-bristles, securely bound, 200 only, on sale today at . . . . . 19c

**Order Your Paint by Telephone CALL MAIN 7841 R. S. Co.**  
**Ready-mixed Paint**  
1/2 Pints, 20c; Pints, 35c; Quarts, 65c; 1/2 Gall, \$1.20; Gall, \$2.20.  
Quality guaranteed for outside and inside work. Large range of colors:  
Cream Terra Cotta  
Light Buff Indian Red  
Drab Oak Leaf  
Old Ivory Signal Red  
Buff Straw Bottle Green  
Brown Orange Green Tint  
Pearl Pea Green  
Silver Grey Apple Green  
Grey Light Reseda  
Slate Willow Green  
Sky Blue Dark Green  
Medium Blue Inside White  
Navy Pink Outside White

## A Sharp, Quick Clearance of Men's Tweed and Worsted Suits at \$16.50

Men in quest of "Something Better" than ordinary value in the way of suits will do well to see what this sale offers.  
Grouped are better quality suits, cut on ultra-fashionable lines, embracing fancy tweeds and worsteds, in desirable shades of grey and brown; materials that embody neat character patterns. There are also suits of wanted navy blue worsted; every suit expertly tailored and lined with genuine mohair lining. All are designed in the popular and practical single-breasted style, with single-breasted vests to match. The lot comprises the broken lines from this season's best selling stock; not all sizes in any one line, but sizes 36 to 44 in the lot. Today \$16.50 at . . . . . 16.50



**49c**

## for Men's Shirts of Excellent Grade and Good Patterns

The reason for the low price is that the laundering is imperfect. Large quantities of such shirts pile up in the factory, and we purchased a big lot at a surprisingly low price. They are negligee style, with laundered cuffs and coat front. All sorts of stripe patterns. Sizes 14 to 17. On sale today at . . . . . 49c

## Sale of Linens and Staples for Thrifty Housewives

### 10 Items—10 Big Bargains

We cannot say too much about the merit of these offerings, good staple articles reduced for no other reason than to make an unusually big day in this department.

**Table Damask—Fully bleached and good heavy quality, assorted designs, 68 inches wide. Regular 60c a yard. Today, a yard . . . . . 45c**  
**Unbleached Table Damask, good sturdy quality, will bleach easily, 70 inches wide. Regular 80c a yard. Special today, yard . . . . . 63c**  
**Pure Linen Huckaback Towels, hemmed size, 15 x 25 inches. Regular 50c a pair. A limited quantity to sell today, 3 pairs for . . . . . 1.00**  
**Round Battenberg Table Covers, large size, 70 inches, all finished with deep heavy lace. Regular \$4.00 each. Rush price today, each . . . . . 2.48**  
**Pillow Cases, hemmed, sizes 42 x 26, and 44 x 33 inches. The quantities being limited we cannot accept phone orders. Rush price, today, 3 pairs for . . . . . 85c**  
**Reversible Cambric Covered Bed Comforters, white fluted cotton filling. Size 72 x 72 inches, 200 to clear, today, at this low price of . . . . . 1.35**  
**Factory Cotton, medium weight, 36 inches wide. Regular 12 1/2c a yard. Special today, yard . . . . . 10c**  
**Madapolam, a fine quality bleached cotton, a trifle heavier than nainsook. Width 40 inches. Regular 22c a yard. Rush price, today, a yard . . . . . 18c**  
**White Flannelette, soft napped finish, 27 inches wide. Regular 15c a yard. Special today, a yard . . . . . 12 1/2c**  
**Plain Tea Towelling with red borders, width 20 inches. Special today, 10 yards for . . . . . 95c**

## Diamonds Are Offered at Reduced Prices

**Men's Scarf Pin, Tiffany style, with solitaire blue-white diamond weighing over a carat. Today . . . . . 235.00**  
**Men's Cluster Rings, with seven diamonds, in Belcher style, claw setting; has appearance of 2-carat solitaire. Today . . . . . 42.50**  
**Onyx and Diamond Ring, set in 18k. gold and platinum. Regular \$60.00. Today . . . . . 47.50**  
**Women's All Platinum Bar Pin, set with nine diamonds. Regular \$60.00. Today . . . . . 46.50**  
**Women's Solitaire Tiffany Rings, blue-white diamonds, in platinum and 18k. gold settings. Today \$46.00, \$77.00, \$98.00, \$122.50.**  
**Five Diamond Rings, set in 18k. gold and platinum. Regular \$100.00, for \$89.00; regular \$125.00, for \$99.00.**  
**Pendant, in cluster style, with eight diamonds; exceptionally brilliant. Sale price . . . . . 57.50**  
**Cluster Rings, seven blue-white diamonds, set in 14k. ring, with platinum front. Regular \$40.00. Today . . . . . 29.75**

The Robert SIMPSON Company Limited

The Robert SIMPSON Company Limited