

A NEW VICTOR RECORD.
18271, 10-in., 90c: When Grandma Sings the Songs She Loved at the End of a Perfect Day.—Campbell and Burr. May Heaven Bless Your Wedding Day.—Campbell and Burr.
—Fifth Floor.

EATON'S DAILY STORE NEWS

A NEW VICTOR RECORD.
18272, 10-in., 90c: Hawaiian Butterfly.—Sterling Trio. When the Sun Goes Down in Dixie.—Peerless Quartet.
—Fifth Floor.

PRACTICAL AIDS IN HOUSEKEEPING

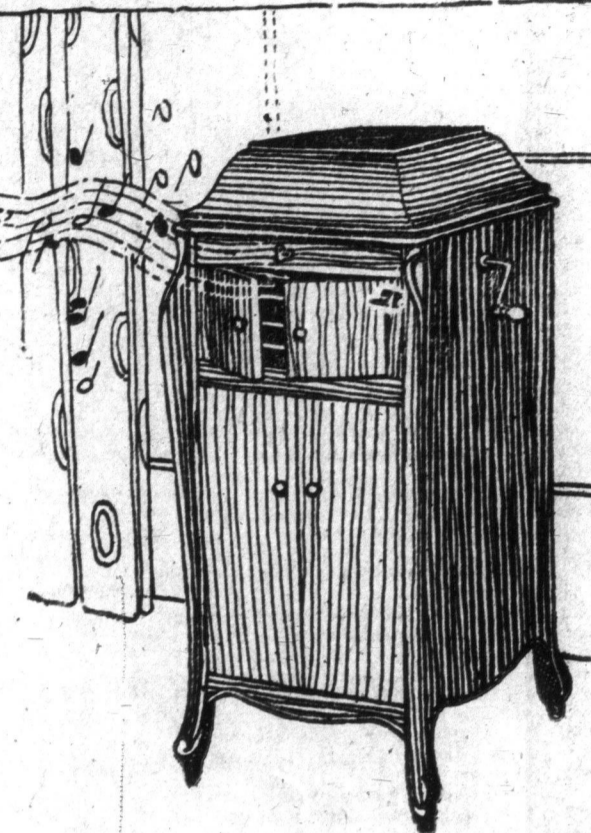
Of Interest to Every Housekeeper and of Particular Interest as Sensible GIFTS FOR THE BRIDE



"MANY HANDS make light work" is an old saying that is quite true, but in these days of scarcity of help, such aids in housekeeping as are mentioned on this page are almost a necessity in many homes—certainly a great convenience in all. The day's work can be accomplished with little effort and allow time to enjoy such a scene as pictured in the heading, the Victrola being also offered as a suggestion of a handsome gift for the bride.

The Victrola XI.

This is a great favorite in the list of Victrola machines. It is an instrument that will bring you an excellent rendition of almost any music you want to hear. It can be obtained in mahogany or oak cabinet, with record shelves. It is 44 1/8 inches high, 20 5/8 inches wide, 28 3/4 inches deep, and has 12-inch turntable, nickel-plated exhibition sound box, Victor tapering tone arm and "goose neck" sound box tube, automatic brake and speed regulator (nickel-plated), extra heavy double spring and spiral motor drive (can be wound while playing), all metal parts nickel-plated. Beautifully finished. Price, \$187.00.
—Fifth Floor.



The Portable Sewing Machine



A Complete Machine That Is No Larger Than a Typewriter, and is Not Too Heavy to Carry in One Hand From One Room to Another. Moreover, it Requires No Pedaling. It Operates by Electricity.

THINK OF IT—a machine that you can take with you in your motor car when you go to the Red Cross or any other sewing meeting—a machine that you can bring down to the living-room of an evening when you must get some bit of stitching done and do not want to shut yourself away in the sewing-room upstairs—a machine that, when not in use, can be put into its box and laid away in the wardrobe, pantry, or any obscure corner.

Its portability—that is one feature of it. The utter ease with which it is run is another. No pedaling is required—no turning of the wheel with the hand. It is run by electricity. Attach the wire to any ordinary electric socket, and all you

have to do is to regulate the speed by a light pressure of your foot on the control pedal, which lies on the floor.

Consider what a boon this is to the semi-invalid who is not permitted to use the ordinary foot-power machine.

The electric sewing machine in the sketch above is a Portable Seamstress Rotary, guaranteed by us as thoroughly reliable in every detail of construction and operation. It sews with a lock stitch—the bobbin being extra large—and is capable of disposing of the same amount and variety of work as the usual full-size machine. At the summer cottage or where electricity is not available a small handle may be attached to the wheel and an average speed obtained by turning the handle. The price is \$45.00.
—Second Floor, Furniture Building.

The Globe-Wernicke Bookcase Will Take Care of the Books

IN THE MATTER OF APPEARANCE it adapts itself to almost any scheme of furnishing, being obtainable in mahogany, fumed, Early English and golden oak finishes.

In size it accommodates itself to almost any space your room affords, being constructed in sectional style.

In service it meets the exact needs of the books you possess, the sections being featured in different heights for volumes of various dimensions. Moreover, the sections may be produced one by one as they are required to add to the original unit or to form new units.

In the matter of care it demands less attention than any other type of bookshelves, the glass doors being dustproof and affording complete protection for the books.

Sizes and prices on some of the most popular units of the Globe-Wernicke are as follows:

Four sections in assorted sizes, with top and base in Art Mission design in fumed oak—price, complete, \$27.75.

Three sections, with top and base, in same style as above, in oak in any finish—price, complete, \$23.00.

Standard design bookcase in fumed or golden oak, consisting of three sections, top and base—price, complete, \$15.25.

Standard design as last described, in mahogany, the three sections in assorted sizes—price, complete, \$21.75.

The bookcase illustrated, consisting of three sections, top and leg base, is obtainable in oak in fumed or golden finish. Price, \$15.25.
—Furniture Building.



Merits of the Electro-Vac

Durable, Efficient and Moderately Priced at \$27.50.



AND THIS LAST is a very strong argument in its favor, for it is marked at the same figure as the usual price in the United States, the place of its manufacture. Its remarkable efficiency is assured by these special features:—

A graded scale bar, making it possible to adjust the suction regulator for rugs of either very short or very long pile.

A motor that is fully guaranteed by its maker (independent of the guarantee of the Electro-Vac)—placed horizontally and so assembled that it cannot come out of position.

A tipping device by which the machine can be raised when necessary to run from one rug to another.

Two auto roller bearing wheels which do not need oiling.

Oil reservoirs which insure a constant supply of oil, prevent overheated bearings and need filling only once a year.

A self-adjusting brush located in the nozzle, and so arranged that it cannot get out of order.

An encasement of nickelled pressed steel, which is extremely durable.

The price of the machine ready for use is \$27.50.

Attachments for cleaning upholstery, stairs, etc., can be supplied. A small set, \$4.75; complete set, \$8.50.
—Fourth Floor, Yonge St.

The Thor Electric Home Washing Machine Banishes the Drudgery of Wash Day

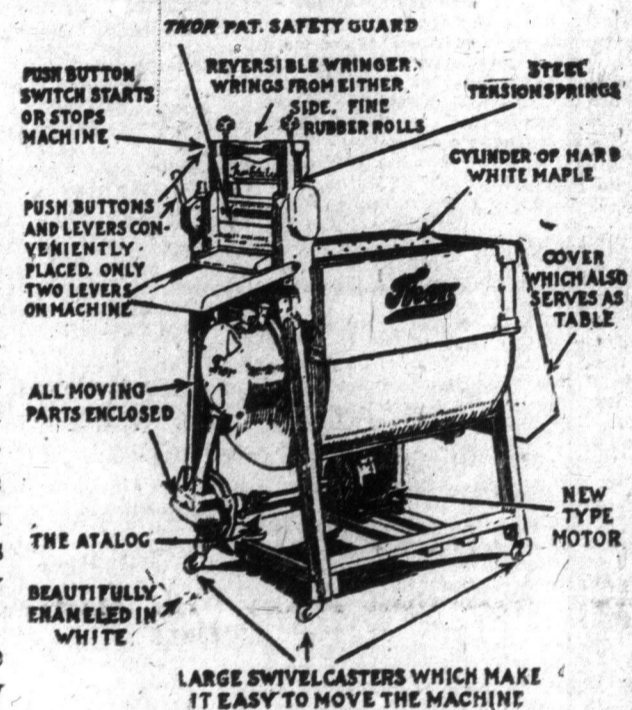
The Illustration Explains in a Practical Way Many of the Features of This Remarkable Convenience.

THE THOR ELECTRIC WASHER will do your washing quickly and silently. Attach the plug on cord to electric socket, open table top as shown in illustration, insert clothes in wooden cylinder, the top of which can be seen, fill the tub with water, close the top and push the button. The cylinder revolves a number of revolutions one way, then reverses. This motion sends billows of bubbling suds through the clothes, driving out every speck of dirt without rubbing.

The Thor will not only wash the clothes, but wring them either way by the push of the lever.

Notice the plates over the wringer rolls. They let the clothes go through the rollers, but stop your fingers. Each side of the wringer has the guard. No matter which way you run the clothes through—from suds to rinse water, or from rinse to bluing water—your fingers are protected.

The Atalog is a controlling device which makes it impossible for anyone to damage the machine through carelessness. It will disconnect the motor if an overload is put upon it, and prevent the burning out of the motor.



All moving parts, wheels, cogs, etc., on tub or wringer are enclosed.

The Thor washing machine has galvanized iron body, painted white, and can be operated on about two cents an hour for current.

It is claimed that there are about 125,000 Thor washing machines now used, many by women who did not believe a machine could wash clothes as well as hand rubbing. See this electric washing machine in operation in the basement. Price, complete, \$120.00.
—Basement.

For System and Convenience in the Kitchen

The Kitchen Cabinet Illustrated is of a Most Modern Design, and is Priced at \$34.50.

THIS KITCHEN CABINET saves time by the convenience of its equipment. If you use an ordinary table, even though it is placed conveniently, you must carry to it and from it all your utensils, tools and supplies. This takes time and many steps. The kitchen cabinet saves this time and energy, because it is a food supply pantry, and a tool and utensil cupboard around a sanitary kitchen table. The table itself is covered with nickeloid, and as it slides out 16 inches beyond front of base, you can sit down at nearly all your work.



The pantry part is arranged so that you can store many packages of groceries within convenient reach. In addition to cupboard for dishes, the flour, sugar, spices, salt, flavoring extracts, coffee, tea and other supplies needed frequently are all in handy compartments, and labelled.

All the tools you need are provided for in same way—can-opener, egg-beater, rolling-pin, etc., are where you can reach them most handily. Lids and pie pans are in a pocket in the door at your left hand. A sliding shelf in the base brings the back part of the pan cupboard to you easily. Under the top compartment is a drawer for table cutlery, string, etc. There are three drawers on the right of lower section, the bottom one containing a mouse-proof and ventilated bread and cake box. Cooking utensils, such as kettles and saucepans, are stored in the bottom of the cabinet, which has a galvanized lining, and which is easily cleaned.

There is a simple and ingenious food guide of economical menus on the upper left door—this gives relief from the daily worry of "what to have for dinner." Another door contains a want list, order sheets, hook for bills, and tray for small change, milk and bread tickets. This cabinet is made of oak, in golden finish, and should last a lifetime. Price, each, \$34.50.
—Second Floor, Furniture Building.

If you wish to purchase or obtain further information regarding any article mentioned on this page, write the Shopping Service, or Telephone Main 3501.

EARLY CLOSING

During MAY, June, July, August and SEPTEMBER, Store Closes at 1 p.m. on Saturdays. No Noon Delivery on Saturdays

SATURDAY AT 1 P. M.

THE T. EATON CO. LIMITED

WE prepay shipping charges on all orders of \$10.00 or over to your nearest station in Ontario and Eastern Provinces, on both Mail Orders and City Purchases.