

If you have a saw mill in connection with your plant and you use the slabs as fuel, they can be dried easier or quicker if piled with the round or bark side down. Moisture follows the grain of the wood and drains out at once when piled this way. A gum slab piled round side down will rot out in a short time, even under cover, as the moisture is retained in the slab, the ends drying and closing the pores of the wood. On the other hand, when firing slabs under a boiler, they

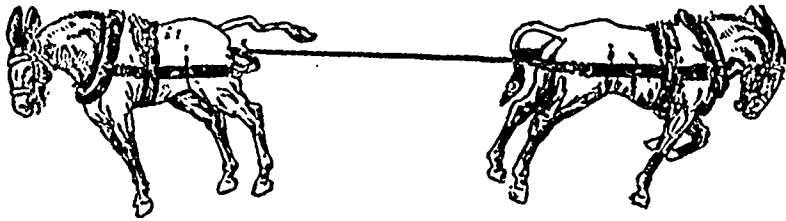
should be placed on the fire with the round side down, as they burn better in this position and offer less resistance to the flames.

Pitch-pine was introduced into France about the year 1869, and did not gain popularity so rapidly in that country as in England. Now, however, enormous quantities of this timber are used in France, and owing to increased demand, the price for this wood is rising proportionately. The resin in pitch-pine is pre-

vented from oozing out by smoking the trees immediately after felling, which hardens the resin and causes it to crystallize in the woody fibres.

P. PAYETTE & CO.

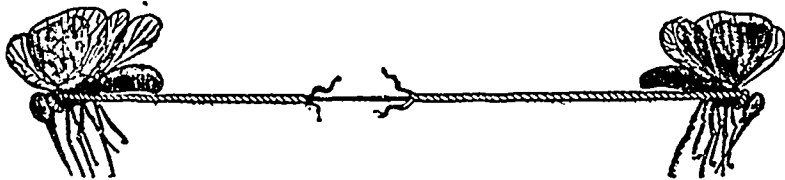
Manufacturers of Saw Mill and Engine Machinery and all kinds of Marine Machinery.
PENETANGUISHENE, ONT



These Mules Cannot Break This Yarn

BECAUSE IT WAS MADE BY THE

Consumers Cordage Co., Limited



Poor Yarn is Dear at Any Price

We Manufacture

**Double and Single Lath Yarn,
Shingle Yarn, and Cordage**
Of Every Description

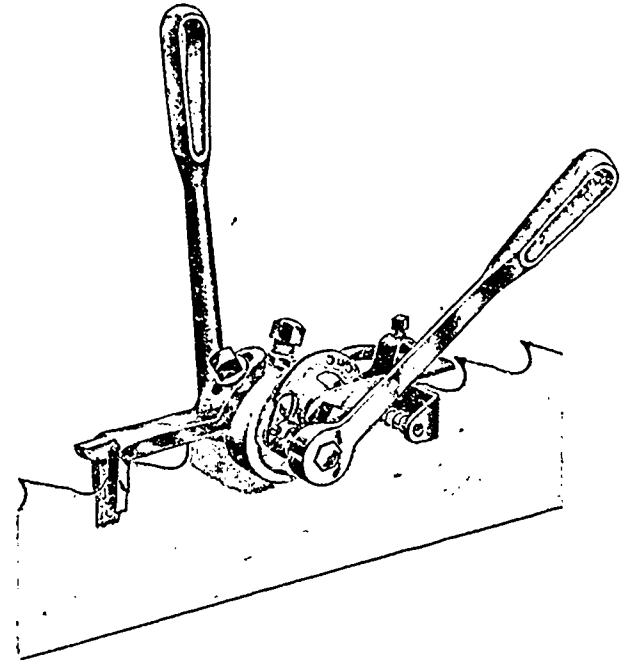
Our mills are equipped with the latest improved machinery for making extra long lengths of Transmission Rope.

CONSUMERS CORDAGE CO., LIMITED
Montreal and Halifax

Crowell Saw Swages

Our Swages are conceded to be the finest ones on the market to-day and are giving perfect satisfaction wherever used.

The CROWELL SWAGES are easily adjusted and simple to manage, they spread and swage the teeth with the LEAST WASTE of any SWAGE on the MARKET.



Cut Showing Band Saw Swage.

Our Swages work equally well on Band or Circular Saws, and do perfect work without front guard or back-stop, although these are convenient and always supplied.

We make NOTHING BUT SAW SWAGES, and use the finest material obtainable in manufacturing.

Our Swages have many points of superiority over all other makes. A "Crowell Swage" used on your saws will enable you to make more and better lumber.

Let me send you reference of some who have used them.

D. J. CROWELL, 200 The Terrace,
BUFFALO, N. Y.

JNO. S. FIELDING, C. E.
DAMS

Room 2, 15 Toronto Street - TORONTO

Please mention the CANADA LUMBERMAN when corresponding with advertisers.

R. SPENCE & CO.

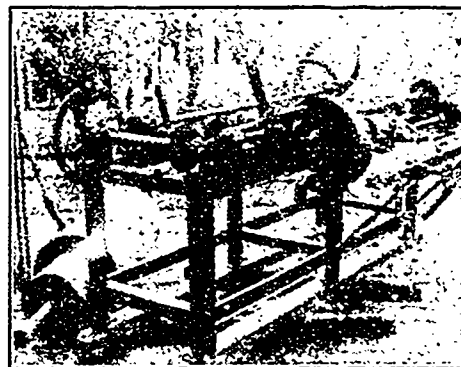
Booth File Works.
HAMILTON, ONT.
FILE AND RASP MANUFACTURERS
AND RE-CUTTERS

A trial order solicited. Write for price lists and terms.
C. P. MOORE, PROPRIETOR.

RAILS For Logging Tramways, Switches, Etc.
New and Second-Hand.
YARD LOCOMOTIVES

John J. Gartshore
83 Front St. West,
(Opposite Queen's Hotel,) Toronto.

Saw Grinders



The Kennedy Island Mill Co., Ltd., Riviere du Loup, Que., says—

"I might say to you that this Grinder is all right and has paid for itself twice over since I bought it. No Shingle Mill of any account should be without one."

B. R. Mowry & Sons, GRAVENHURST,
ONTARIO

TRIMMERS

If the Board does not reach the quadrant the Saw stays down and trims, see cut. To cut off more than two feet, bad ends, etc., pull the cord, see dotted lines. The whole Board can be cut into two foot lengths or trimmed in any manner. The Saw frame is balanced, the Arbor pulleys are 8 in. x 8 in. We build several styles of Trimmers, also all kinds of

Saw and Shingle Mill Machinery

Our "Boss" Shingle Machine is second to none in Canada. Our sales will prove it. We make Saw Jointers and Knife Jointers, also Packing Boxes. Send for Catalogue.

For Sale

2 sets of Ellis' offsets—Cheap.
One second-hand stationary Bell Crank Steam Nigger manufactured by the Wm. Hamilton Mfg. Co., Peterboro.
We shall be pleased to supply Punt Winches or Capstans to parties requiring same. Prices on application.