

## "VITITE"

### COMPRESSED HIGH PRESSURE STEAM PACKING

"Vitite" Packing is a Compressed Asbestos sheeting especially treated. It makes an ideal flange and manhole joint and a trial will be a revelation to you.

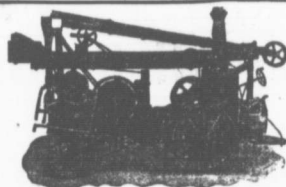
"Vitite" Packing resists highest steam pressure and superheated steam, and is unexcelled as a flange packing for Steam Hydraulic, Gas Engine, Acid, Ammonia and other joints.

"Vitite" Packing insures greatest reliability against pressure and stretching and will not become hard in the joint.

"Vitite" Packing is supplied in sheets 48 inches square, 1-32, 1-16 and 1-8 inch thick.

SAMPLES AND PRICES ON REQUEST.

**T. McAVITY & SONS, LIMITED**  
ST. JOHN, N. B.



## The KEYSTONE

**Percussion Core Drill Attachment  
is an economical appliance for  
TESTING COAL LANDS.**

It can be used in connection with any good "churn" drill, but operates best on the long-stroke KEYSTONE, thus making the cheapest and quickest method of boring to be found.

In operation a hole is sunk to the coal with the ordinary Rock Bit. The Bit and Stem are then removed and the Coring Attachment put on in their place. It takes a 4 ft. core out of the Softest as well as the Hardest part of the vein. Avoids all delay and expense of "rods" water wash, diamonds, shot, and heavy operating mechanism.

**Price of Complete Attachment  
\$200.00**

Catalog No. 2 B. is a book on the subject.  
We make Water, Oil & Test Well Drillers  
for all depths and purposes.

**Keystone Driller Co. Beaver Falls, Pa.**

## Mining & Mill Supplies.

Valves,  
Fittings,  
Packing,



Boiler  
Tubes,  
Steel  
Plates,

Steam Goods  
—of every—  
Description.

Angles,  
Tees, etc.  
SOLID DIE  
RIVETS.

## Iron Pipe for

### Mining Purposes.

—Catalogues and Prices on Application.—

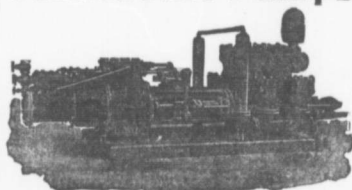
**THOMAS ROBERTSON & CO,**

—LIMITED—

**MONTREAL, QUE.**

—Established 1852—

## Jeanesville Pumps



**For MINES, WATER WORKS, SEWAGE,  
ETC., ETC.**

A Reliable, Efficient, and Substantial,  
because of most Fifty Years Experience  
Stands back of Every Machine. Fol-  
lowing types for any capacity, any head:  
DIRECT ACTING and CRANK and FLY-WHEEL.  
CENTRIFUGAL PUMPS, VOLUTE or TURBINE.  
Steam or Electrically Driven

**Jeanesville Iron Works Co.,**  
HAZLETON, PA., U. S. A