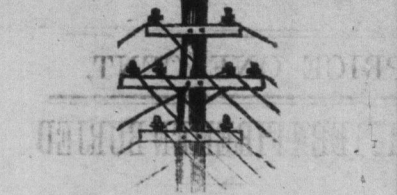


THE TORONTO WORLD

Cent Morning Newspaper.



Latest News from all Quarters of the World. Accurate, Reliable, and Free of Bias.

Subscription rates: One Year \$3.00, Six Months \$1.80, Three Months \$1.00.

Advertising rates: Commercial advertising, each insertion 10 cents.

Friday Morning, Feb. 8, 1884.

The Hudson Bay Route. Replying to a question put by Dr. Orton, Sir Hector Langevin said on Wednesday that the estimates would contain an appropriation for an exploratory expedition to Hudson's bay and straits...

The Western Canada Loan and Savings Company. The twenty-first annual meeting of this company was held on Wednesday last. Simultaneously with the attainment of its majority the company has accumulated the maximum "res" which it set out to obtain...

A New Danger. The publication of a terrible example of it has been made public. The horrible murder of a young woman may be familiar to our readers...

The Colonel on the General. Col. Denison has an article in the Week, taking up the statement made in the house of representatives the other day that "Grant was the greatest soldier who has ever been on the face of the earth since the days of Julius Caesar."

The Gambler Must Go. English justice is sometimes slow, but before it gets through the result is generally pretty effective. For a long time the London clubs have been given over to gambling...

A Co-operative Bakery. The movement for a co-operative bakery goes bravely on, and we hope to see it accomplished success ere long. It is simply outrageous that bread should be as dear in Toronto as it is in Liverpool...

do, considering the price of wheat and buyers of bread pay a still greater percentage over the fair thing...

The men of the bakers' union ought to know what good flour can be bought for, and what bread made of it can be sold for...

It is gratifying to be able to add that the repayments on the part of the company's borrowers, both in Ontario and in the company's new field of operations in Manitoba...

President Arthur is in a bad fix. A portentous cloud hangs over the capital city of the United States, which may at any moment burst and involve that unhappy country once more in the horrors of a civil war...

Miss Leslie Josephine Ayer, the heiress of the Dr. Ayer, of ague cure, pills, and patent medicine fame, has been married to a United States naval officer...

Reforms Required in School Matters. To the Editor of The World. Sir: In the World of the 8th an ex-high school master refers to the appointment of unqualified persons to read papers written at examinations for public school teachers...

And why are irregular certificates still issued to teachers? These are of several kinds. Permits, extensions and permanent third-class certificates...

Stealing Telegrams. To the Editor of The World. Sir: Without a bias to either political party, your journal is always ready to say a good word in favor of political morality...

The Corporation of London. An English correspondent writes: "It would not be using words in their accepted sense to say there is no municipal corporation in America so given to pilfering and plundering as the corporation of London."

to show their capacity by proposing medals for the action and banners for the community—not merely to show a greed for office which shrinks from no means...

WESTERN CANADA LOAN AND SAVINGS COMPANY. The twenty-first annual meeting of this company was held at their offices, No. 70 Church Street, Toronto, at 12 o'clock noon yesterday, 6th February...

The people of Canada ought to be a contented people. Their cities are not flooded out by devastating floods such as are visiting Pittsburgh, Cincinnati and Louisville at the present time...

At the rate she is travelling now Toronto will soon have a population of 125,000, exceeding Detroit, Milwaukee, Jersey City, Louisville, and almost rivaling Buffalo and Washington...

WALTER S. LEE, G. W. ALLAN, Manager. Statements of the liabilities and assets of the company, 31st December, 1883.

Assets: Cash in Bank, \$1,200,000; Real Estate, \$200,000; Loans, \$500,000; Municipal Debentures, \$100,000; Office Furniture, \$10,000; Cash in Office, \$10,000; Cash in Banks, \$100,000; Cash in the hands of the Bank of Montreal, \$100,000; Interest Maturing Bonds, \$100,000.

Liabilities: Deposits and Interest, \$1,000,000; Debentures and Bonds, \$1,000,000; Sundry Accounts, \$100,000; Loans to meet contingencies, \$100,000; Loans, \$500,000; Municipal Debentures, \$100,000; Office Furniture, \$10,000; Cash in Office, \$10,000; Cash in Banks, \$100,000; Cash in the hands of the Bank of Montreal, \$100,000; Interest Maturing Bonds, \$100,000.

Assets: Cash in Bank, \$1,200,000; Real Estate, \$200,000; Loans, \$500,000; Municipal Debentures, \$100,000; Office Furniture, \$10,000; Cash in Office, \$10,000; Cash in Banks, \$100,000; Cash in the hands of the Bank of Montreal, \$100,000; Interest Maturing Bonds, \$100,000.

Liabilities: Deposits and Interest, \$1,000,000; Debentures and Bonds, \$1,000,000; Sundry Accounts, \$100,000; Loans to meet contingencies, \$100,000; Loans, \$500,000; Municipal Debentures, \$100,000; Office Furniture, \$10,000; Cash in Office, \$10,000; Cash in Banks, \$100,000; Cash in the hands of the Bank of Montreal, \$100,000; Interest Maturing Bonds, \$100,000.

FINANCE AND TRADE. TORONTO, Thursday, Feb. 7. There is an improved local demand for but...

Eggs continue scarce and retail grocers are holding strictly fast at 35c per doz. Potatoes are selling from 30c to 32c per bushel in Chicago and the New York market is weak at \$1 to \$1.50 per bushel...

There is a good American demand for Canadian Swede turnips. New York turnips were weaker all round. Central Pacific made 3 points. A cable to Cox & Worts quotes Hudson Bay at 42 1/2 and Northwest Land at 56 3/4.

Local Markets. THE FARMERS' MARKET.—The receipts of grain on the street fair and the price firm. About 1000 bushels of wheat sold at 82c, 1000 bushels of barley at 81c, 1000 bushels of oats at 75c, 1000 bushels of rye at 75c, 1000 bushels of corn at 55c, 1000 bushels of clover at 12c, 1000 bushels of timothy at 12c, 1000 bushels of alfalfa at 12c, 1000 bushels of hay at 12c, 1000 bushels of straw at 12c, 1000 bushels of manure at 12c, 1000 bushels of fertilizer at 12c, 1000 bushels of lime at 12c, 1000 bushels of gypsum at 12c, 1000 bushels of salt at 12c, 1000 bushels of soda at 12c, 1000 bushels of potash at 12c, 1000 bushels of sulphur at 12c, 1000 bushels of iron at 12c, 1000 bushels of steel at 12c, 1000 bushels of copper at 12c, 1000 bushels of brass at 12c, 1000 bushels of zinc at 12c, 1000 bushels of lead at 12c, 1000 bushels of tin at 12c, 1000 bushels of silver at 12c, 1000 bushels of gold at 12c, 1000 bushels of platinum at 12c, 1000 bushels of mercury at 12c, 1000 bushels of arsenic at 12c, 1000 bushels of antimony at 12c, 1000 bushels of bismuth at 12c, 1000 bushels of cobalt at 12c, 1000 bushels of nickel at 12c, 1000 bushels of manganese at 12c, 1000 bushels of chromium at 12c, 1000 bushels of iron at 12c, 1000 bushels of steel at 12c, 1000 bushels of copper at 12c, 1000 bushels of brass at 12c, 1000 bushels of zinc at 12c, 1000 bushels of lead at 12c, 1000 bushels of tin at 12c, 1000 bushels of silver at 12c, 1000 bushels of gold at 12c, 1000 bushels of platinum at 12c, 1000 bushels of mercury at 12c, 1000 bushels of arsenic at 12c, 1000 bushels of antimony at 12c, 1000 bushels of bismuth at 12c, 1000 bushels of cobalt at 12c, 1000 bushels of nickel at 12c, 1000 bushels of manganese at 12c, 1000 bushels of chromium at 12c, 1000 bushels of iron at 12c, 1000 bushels of steel at 12c, 1000 bushels of copper at 12c, 1000 bushels of brass at 12c, 1000 bushels of zinc at 12c, 1000 bushels of lead at 12c, 1000 bushels of tin at 12c, 1000 bushels of silver at 12c, 1000 bushels of gold at 12c, 1000 bushels of platinum at 12c, 1000 bushels of mercury at 12c, 1000 bushels of arsenic at 12c, 1000 bushels of antimony at 12c, 1000 bushels of bismuth at 12c, 1000 bushels of cobalt at 12c, 1000 bushels of nickel at 12c, 1000 bushels of manganese at 12c, 1000 bushels of chromium at 12c, 1000 bushels of iron at 12c, 1000 bushels of steel at 12c, 1000 bushels of copper at 12c, 1000 bushels of brass at 12c, 1000 bushels of zinc at 12c, 1000 bushels of lead at 12c, 1000 bushels of tin at 12c, 1000 bushels of silver at 12c, 1000 bushels of gold at 12c, 1000 bushels of platinum at 12c, 1000 bushels of mercury at 12c, 1000 bushels of arsenic at 12c, 1000 bushels of antimony at 12c, 1000 bushels of bismuth at 12c, 1000 bushels of cobalt at 12c, 1000 bushels of nickel at 12c, 1000 bushels of manganese at 12c, 1000 bushels of chromium at 12c, 1000 bushels of iron at 12c, 1000 bushels of steel at 12c, 1000 bushels of copper at 12c, 1000 bushels of brass at 12c, 1000 bushels of zinc at 12c, 1000 bushels of lead at 12c, 1000 bushels of tin at 12c, 1000 bushels of silver at 12c, 1000 bushels of gold at 12c, 1000 bushels of platinum at 12c, 1000 bushels of mercury at 12c, 1000 bushels of arsenic at 12c, 1000 bushels of antimony at 12c, 1000 bushels of bismuth at 12c, 1000 bushels of cobalt at 12c, 1000 bushels of nickel at 12c, 1000 bushels of manganese at 12c, 1000 bushels of chromium at 12c, 1000 bushels of iron at 12c, 1000 bushels of steel at 12c, 1000 bushels of copper at 12c, 1000 bushels of brass at 12c, 1000 bushels of zinc at 12c, 1000 bushels of lead at 12c, 1000 bushels of tin at 12c, 1000 bushels of silver at 12c, 1000 bushels of gold at 12c, 1000 bushels of platinum at 12c, 1000 bushels of mercury at 12c, 1000 bushels of arsenic at 12c, 1000 bushels of antimony at 12c, 1000 bushels of bismuth at 12c, 1000 bushels of cobalt at 12c, 1000 bushels of nickel at 12c, 1000 bushels of manganese at 12c, 1000 bushels of chromium at 12c, 1000 bushels of iron at 12c, 1000 bushels of steel at 12c, 1000 bushels of copper at 12c, 1000 bushels of brass at 12c, 1000 bushels of zinc at 12c, 1000 bushels of lead at 12c, 1000 bushels of tin at 12c, 1000 bushels of silver at 12c, 1000 bushels of gold at 12c, 1000 bushels of platinum at 12c, 1000 bushels of mercury at 12c, 1000 bushels of arsenic at 12c, 1000 bushels of antimony at 12c, 1000 bushels of bismuth at 12c, 1000 bushels of cobalt at 12c, 1000 bushels of nickel at 12c, 1000 bushels of manganese at 12c, 1000 bushels of chromium at 12c, 1000 bushels of iron at 12c, 1000 bushels of steel at 12c, 1000 bushels of copper at 12c, 1000 bushels of brass at 12c, 1000 bushels of zinc at 12c, 1000 bushels of lead at 12c, 1000 bushels of tin at 12c, 1000 bushels of silver at 12c, 1000 bushels of gold at 12c, 1000 bushels of platinum at 12c, 1000 bushels of mercury at 12c, 1000 bushels of arsenic at 12c, 1000 bushels of antimony at 12c, 1000 bushels of bismuth at 12c, 1000 bushels of cobalt at 12c, 1000 bushels of nickel at 12c, 1000 bushels of manganese at 12c, 1000 bushels of chromium at 12c, 1000 bushels of iron at 12c, 1000 bushels of steel at 12c, 1000 bushels of copper at 12c, 1000 bushels of brass at 12c, 1000 bushels of zinc at 12c, 1000 bushels of lead at 12c, 1000 bushels of tin at 12c, 1000 bushels of silver at 12c, 1000 bushels of gold at 12c, 1000 bushels of platinum at 12c, 1000 bushels of mercury at 12c, 1000 bushels of arsenic at 12c, 1000 bushels of antimony at 12c, 1000 bushels of bismuth at 12c, 1000 bushels of cobalt at 12c, 1000 bushels of nickel at 12c, 1000 bushels of manganese at 12c, 1000 bushels of chromium at 12c, 1000 bushels of iron at 12c, 1000 bushels of steel at 12c, 1000 bushels of copper at 12c, 1000 bushels of brass at 12c, 1000 bushels of zinc at 12c, 1000 bushels of lead at 12c, 1000 bushels of tin at 12c, 1000 bushels of silver at 12c, 1000 bushels of gold at 12c, 1000 bushels of platinum at 12c, 1000 bushels of mercury at 12c, 1000 bushels of arsenic at 12c, 1000 bushels of antimony at 12c, 1000 bushels of bismuth at 12c, 1000 bushels of cobalt at 12c, 1000 bushels of nickel at 12c, 1000 bushels of manganese at 12c, 1000 bushels of chromium at 12c, 1000 bushels of iron at 12c, 1000 bushels of steel at 12c, 1000 bushels of copper at 12c, 1000 bushels of brass at 12c, 1000 bushels of zinc at 12c, 1000 bushels of lead at 12c, 1000 bushels of tin at 12c, 1000 bushels of silver at 12c, 1000 bushels of gold at 12c, 1000 bushels of platinum at 12c, 1000 bushels of mercury at 12c, 1000 bushels of arsenic at 12c, 1000 bushels of antimony at 12c, 1000 bushels of bismuth at 12c, 1000 bushels of cobalt at 12c, 1000 bushels of nickel at 12c, 1000 bushels of manganese at 12c, 1000 bushels of chromium at 12c, 1000 bushels of iron at 12c, 1000 bushels of steel at 12c, 1000 bushels of copper at 12c, 1000 bushels of brass at 12c, 1000 bushels of zinc at 12c, 1000 bushels of lead at 12c, 1000 bushels of tin at 12c, 1000 bushels of silver at 12c, 1000 bushels of gold at 12c, 1000 bushels of platinum at 12c, 1000 bushels of mercury at 12c, 1000 bushels of arsenic at 12c, 1000 bushels of antimony at 12c, 1000 bushels of bismuth at 12c, 1000 bushels of cobalt at 12c, 1000 bushels of nickel at 12c, 1000 bushels of manganese at 12c, 1000 bushels of chromium at 12c, 1000 bushels of iron at 12c, 1000 bushels of steel at 12c, 1000 bushels of copper at 12c, 1000 bushels of brass at 12c, 1000 bushels of zinc at 12c, 1000 bushels of lead at 12c, 1000 bushels of tin at 12c, 1000 bushels of silver at 12c, 1000 bushels of gold at 12c, 1000 bushels of platinum at 12c, 1000 bushels of mercury at 12c, 1000 bushels of arsenic at 12c, 1000 bushels of antimony at 12c, 1000 bushels of bismuth at 12c, 1000 bushels of cobalt at 12c, 1000 bushels of nickel at 12c, 1000 bushels of manganese at 12c, 1000 bushels of chromium at 12c, 1000 bushels of iron at 12c, 1000 bushels of steel at 12c, 1000 bushels of copper at 12c, 1000 bushels of brass at 12c, 1000 bushels of zinc at 12c, 1000 bushels of lead at 12c, 1000 bushels of tin at 12c, 1000 bushels of silver at 12c, 1000 bushels of gold at 12c, 1000 bushels of platinum at 12c, 1000 bushels of mercury at 12c, 1000 bushels of arsenic at 12c, 1000 bushels of antimony at 12c, 1000 bushels of bismuth at 12c, 1000 bushels of cobalt at 12c, 1000 bushels of nickel at 12c, 1000 bushels of manganese at 12c, 1000 bushels of chromium at 12c, 1000 bushels of iron at 12c, 1000 bushels of steel at 12c, 1000 bushels of copper at 12c, 1000 bushels of brass at 12c, 1000 bushels of zinc at 12c, 1000 bushels of lead at 12c, 1000 bushels of tin at 12c, 1000 bushels of silver at 12c, 1000 bushels of gold at 12c, 1000 bushels of platinum at 12c, 1000 bushels of mercury at 12c, 1000 bushels of arsenic at 12c, 1000 bushels of antimony at 12c, 1000 bushels of bismuth at 12c, 1000 bushels of cobalt at 12c, 1000 bushels of nickel at 12c, 1000 bushels of manganese at 12c, 1000 bushels of chromium at 12c, 1000 bushels of iron at 12c, 1000 bushels of steel at 12c, 1000 bushels of copper at 12c, 1000 bushels of brass at 12c, 1000 bushels of zinc at 12c, 1000 bushels of lead at 12c, 1000 bushels of tin at 12c, 1000 bushels of silver at 12c, 1000 bushels of gold at 12c, 1000 bushels of platinum at 12c, 1000 bushels of mercury at 12c, 1000 bushels of arsenic at 12c, 1000 bushels of antimony at 12c, 1000 bushels of bismuth at 12c, 1000 bushels of cobalt at 12c, 1000 bushels of nickel at 12c, 1000 bushels of manganese at 12c, 1000 bushels of chromium at 12c, 1000 bushels of iron at 12c, 1000 bushels of steel at 12c, 1000 bushels of copper at 12c, 1000 bushels of brass at 12c, 1000 bushels of zinc at 12c, 1000 bushels of lead at 12c, 1000 bushels of tin at 12c, 1000 bushels of silver at 12c, 1000 bushels of gold at 12c, 1000 bushels of platinum at 12c, 1000 bushels of mercury at 12c, 1000 bushels of arsenic at 12c, 1000 bushels of antimony at 12c, 1000 bushels of bismuth at 12c, 1000 bushels of cobalt at 12c, 1000 bushels of nickel at 12c, 1000 bushels of manganese at 12c, 1000 bushels of chromium at 12c, 1000 bushels of iron at 12c, 1000 bushels of steel at 12c, 1000 bushels of copper at 12c, 1000 bushels of brass at 12c, 1000 bushels of zinc at 12c, 1000 bushels of lead at 12c, 1000 bushels of tin at 12c, 1000 bushels of silver at 12c, 1000 bushels of gold at 12c, 1000 bushels of platinum at 12c, 1000 bushels of mercury at 12c, 1000 bushels of arsenic at 12c, 1000 bushels of antimony at 12c, 1000 bushels of bismuth at 12c, 1000 bushels of cobalt at 12c, 1000 bushels of nickel at 12c, 1000 bushels of manganese at 12c, 1000 bushels of chromium at 12c, 1000 bushels of iron at 12c, 1000 bushels of steel at 12c, 1000 bushels of copper at 12c, 1000 bushels of brass at 12c, 1000 bushels of zinc at 12c, 1000 bushels of lead at 12c, 1000 bushels of tin at 12c, 1000 bushels of silver at 12c, 1000 bushels of gold at 12c, 1000 bushels of platinum at 12c, 1000 bushels of mercury at 12c, 1000 bushels of arsenic at 12c, 1000 bushels of antimony at 12c, 1000 bushels of bismuth at 12c, 1000 bushels of cobalt at 12c, 1000 bushels of nickel at 12c, 1000 bushels of manganese at 12c, 1000 bushels of chromium at 12c, 1000 bushels of iron at 12c, 1000 bushels of steel at 12c, 1000 bushels of copper at 12c, 1000 bushels of brass at 12c, 1000 bushels of zinc at 12c, 1000 bushels of lead at 12c, 1000 bushels of tin at 12c, 1000 bushels of silver at 12c, 1000 bushels of gold at 12c, 1000 bushels of platinum at 12c, 1000 bushels of mercury at 12c, 1000 bushels of arsenic at 12c, 1000 bushels of antimony at 12c, 1000 bushels of bismuth at 12c, 1000 bushels of cobalt at 12c, 1000 bushels of nickel at 12c, 1000 bushels of manganese at 12c, 1000 bushels of chromium at 12c, 1000 bushels of iron at 12c, 1000 bushels of steel at 12c, 1000 bushels of copper at 12c, 1000 bushels of brass at 12c, 1000 bushels of zinc at 12c, 1000 bushels of lead at 12c, 1000 bushels of tin at 12c, 1000 bushels of silver at 12c, 1000 bushels of gold at 12c, 1000 bushels of platinum at 12c, 1000 bushels of mercury at 12c, 1000 bushels of arsenic at 12c, 1000 bushels of antimony at 12c, 1000 bushels of bismuth at 12c, 1000 bushels of cobalt at 12c, 1000 bushels of nickel at 12c, 1000 bushels of manganese at 12c, 1000 bushels of chromium at 12c, 1000 bushels of iron at 12c, 1000 bushels of steel at 12c, 1000 bushels of copper at 12c, 1000 bushels of brass at 12c, 1000 bushels of zinc at 12c, 1000 bushels of lead at 12c, 1000 bushels of tin at 12c, 1000 bushels of silver at 12c, 1000 bushels of gold at 12c, 1000 bushels of platinum at 12c, 1000 bushels of mercury at 12c, 1000 bushels of arsenic at 12c, 1000 bushels of antimony at 12c, 1000 bushels of bismuth at 12c, 1000 bushels of cobalt at 12c, 1000 bushels of nickel at 12c, 1000 bushels of manganese at 12c, 1000 bushels of chromium at 12c, 1000 bushels of iron at 12c, 1000 bushels of steel at 12c, 1000 bushels of copper at 12c, 1000 bushels of brass at 12c, 1000 bushels of zinc at 12c, 1000 bushels of lead at 12c, 1000 bushels of tin at 12c, 1000 bushels of silver at 12c, 1000 bushels of gold at 12c, 1000 bushels of platinum at 12c, 1000 bushels of mercury at 12c, 1000 bushels of arsenic at 12c, 1000 bushels of antimony at 12c, 1000 bushels of bismuth at 12c, 1000 bushels of cobalt at 12c, 1000 bushels of nickel at 12c, 1000 bushels of manganese at 12c, 1000 bushels of chromium at 12c, 1000 bushels of iron at 12c, 1000 bushels of steel at 12c, 1000 bushels of copper at 12c, 1000 bushels of brass at 12c, 1000 bushels of zinc at 12c, 1000 bushels of lead at 12c, 1000 bushels of tin at 12c, 1000 bushels of silver at 12c, 1000 bushels of gold at 12c, 1000 bushels of platinum at 12c, 1000 bushels of mercury at 12c, 1000 bushels of arsenic at 12c, 1000 bushels of antimony at 12c, 1000 bushels of bismuth at 12c, 1000 bushels of cobalt at 12c, 1000 bushels of nickel at 12c, 1000 bushels of manganese at 12c, 1000 bushels of chromium at 12c, 1000 bushels of iron at 12c, 1000 bushels of steel at 12c, 1000 bushels of copper at 12c, 1000 bushels of brass at 12c, 1000 bushels of zinc at 12c, 1000 bushels of lead at 12c, 1000 bushels of tin at 12c, 1000 bushels of silver at 12c, 1000 bushels of gold at 12c, 1000 bushels of platinum at 12c, 1000 bushels of mercury at 12c, 1000 bushels of arsenic at 12c, 1000 bushels of antimony at 12c, 1000 bushels of bismuth at 12c, 1000 bushels of cobalt at 12c, 1000 bushels of nickel at 12c, 1000 bushels of manganese at 12c, 1000 bushels of chromium at 12c, 1000 bushels of iron at 12c, 1000 bushels of steel at 12c, 1000 bushels of copper at 12c, 1000 bushels of brass at 12c, 1000 bushels of zinc at 12c, 1000 bushels of lead at 12c, 1000 bushels of tin at 12c, 1000 bushels of silver at 12c, 1000 bushels of gold at 12c, 1000 bushels of platinum at 12c, 1000 bushels of mercury at 12c, 1000 bushels of arsenic at 12c, 1000 bushels of antimony at 12c, 1000 bushels of bismuth at 12c, 1000 bushels of cobalt at 12c, 1000 bushels of nickel at 12c, 1000 bushels of manganese at 12c, 1000 bushels of chromium at 12c, 1000 bushels of iron at 12c, 1000 bushels of steel at 12c, 1000 bushels of copper at 12c, 1000 bushels of brass at 12c, 1000 bushels of zinc at 12c, 1000 bushels of lead at 12c, 1000 bushels of tin at 12c, 1000 bushels of silver at 12c, 1000 bushels of gold at 12c, 1000 bushels of platinum at 12c, 1000 bushels of mercury at 12c, 1000 bushels of arsenic at 12c, 1000 bushels of antimony at 12c, 1000 bushels of bismuth at 12c, 1000 bushels of cobalt at 12c, 1000 bushels of nickel at 12c, 1000 bushels of manganese at 12c, 1000 bushels of chromium at 12c, 1000 bushels of iron at 12c, 1000 bushels of steel at 12c, 1000 bushels of copper at 12c, 1000 bushels of brass at 12c, 1000 bushels of zinc at 12c, 1000 bushels of lead at 12c, 1000 bushels of tin at 12c, 1000 bushels of silver at 12c, 1000 bushels of gold at 12c, 1000 bushels of platinum at 12c, 1000 bushels of mercury at 12c, 1000 bushels of arsenic at 12c, 1000 bushels of antimony at 12c, 1000 bushels of bismuth at 12c, 1000 bushels of cobalt at 12c, 1000 bushels of nickel at 12c, 1000 bushels of manganese at 12c, 1000 bushels of chromium at 12c, 1000 bushels of iron at 12c, 1000 bushels of steel at 12c, 1000 bushels of copper at 12c, 1000 bushels of brass at 12c, 1000 bushels of zinc at 12c, 1000 bushels of lead at 12c, 1000 bushels of tin at 12c, 1000 bushels of silver at 12c, 1000 bushels of gold at 12c, 1000 bushels of platinum at 12c, 1000 bushels of mercury at 12c, 1000 bushels of arsenic at 12c, 1000 bushels of antimony at 12c, 1000 bushels of bismuth at 12c, 1000 bushels of cobalt at 12c, 1000 bushels of nickel at 12c, 1000 bushels of manganese at 12c, 1000 bushels of chromium at 12c, 1000 bushels of iron at 12c, 1000 bushels of steel at 12c, 1000 bushels of copper at 12c, 1000 bushels of brass at 12c, 1000 bushels of zinc at 12c, 1000 bushels of lead at 12c, 1000 bushels of tin at 12c, 1000 bushels of silver at 12c, 1000 bushels of gold at 12c, 1000 bushels of platinum at 12c, 1000 bushels of mercury at 12c, 1000 bushels of arsenic at 12c, 1000 bushels of antimony at 12c, 1000 bushels of bismuth at 12c, 1000 bushels of cobalt at 12c, 1000 bushels of nickel at 12c, 1000 bushels of manganese at 12c, 1000 bushels of chromium at 12c, 1000 bushels of iron at 12c, 1000 bushels of steel at 12c, 1000 bushels of copper at 12c, 1000 bushels of brass at 12c, 1000 bushels of zinc at 12c, 1000 bushels of lead at 12c, 1000 bushels of tin at 12c, 1000 bushels of silver at 12c, 1000 bushels of gold at 12c, 1000 bushels of platinum at 12c, 1000 bushels of mercury at 12c, 1000 bushels of arsenic at 12c, 1000 bushels of antimony at 12c, 1000 bushels of bismuth at 12c, 1000 bushels of cobalt at 12c, 1000 bushels of nickel at 12c, 1000 bushels of manganese at 12c, 1000 bushels of chromium at 12c, 1000 bushels of iron at 12c, 1000 bushels of steel at 12c, 1000 bushels of copper at 12c, 1000 bushels of brass at 12c, 1000 bushels of zinc at 12c, 1000 bushels of lead at 12c, 1000 bushels of tin at 12c, 1000 bushels of silver at 12c, 1000 bushels of gold at 12c, 1000 bushels of platinum at 12c, 1000 bushels of mercury at 12c, 1000 bushels of arsenic at 12c, 1000 bushels of antimony at 12c, 1000 bushels of bismuth at 12c, 1000 bushels of cobalt at 12c, 1000 bushels of nickel at 12c, 1000 bushels of manganese at 12c, 1000 bushels of chromium at 12c, 1000 bushels of iron at 12c, 1000 bushels of steel at 12c, 1000 bushels of copper at 12c, 1000 bushels of brass at 12c, 1000 bushels of zinc at 12c, 1000 bushels of lead at 12c, 1000 bushels of tin at 12c, 1000 bushels of silver at 12c, 1000 bushels of gold at 12c, 1000 bushels of platinum at 12c, 1000 bushels of mercury at 12c, 1000 bushels of arsenic at 12c, 1000 bushels of antimony at 12c, 1000 bushels of bismuth at 12c, 1000 bushels of cobalt at 12c, 1000 bushels of nickel at 12c, 1000 bushels of manganese at 12c, 1000 bushels of chromium at 12c, 1000 bushels of iron at 12c, 1000 bushels of steel at 12c, 1000 bushels of copper at 12c, 1000 bushels of brass at 12c, 1000 bushels of zinc at 12c, 1000 bushels of lead at 12c, 1000 bushels of tin at 12c, 1000 bushels of silver at 12c, 1000 bushels of gold at 12c, 1000 bushels of platinum at 12c, 1000 bushels of mercury at 12c, 1000 bushels of arsenic at 12c, 1000 bushels of antimony at 12c, 1000 bushels of bismuth at 12c, 1000 bushels of cobalt at 12c, 1000 bushels of nickel at 12c, 1000 bushels of manganese at 12c, 1000 bushels of chromium at 12c, 1000