

Typing or MTS. Karen 438-9470 evenings, 432-2843 days.

Will type for students. Call Wilma 454-5242.

Word Processing Reasonable Rates. Iris: 439-6753 (evenings).

Experienced secretaries will type Term Papers, etc., rates reasonable. Call Diana 429-1034 or Marlene 426-2572.

Prebook word processing for same-day service. Photocopies, transparencies. Open every day, weekday evenings. Mark 9, Hub Mall, 432-7936.

Efficient typist available. North East Edmonton. 475-4309.

Typing, Data-Processing, fast, accurate, pickup & deliver. Phone Chris 988-5793 Sundays, evenings. 438-5550 9 - 3:30 MWF.

Typing, reasonable rates. Day and evening - Cindy 479-3949.

Genetics tutor for 297/375 need help with assignments, labs? Call Charlie 433-7611 evenings.

Super word Pro (Oliver Area) - term papers, theses etc. Rates negotiable. Phone 482-6198.

Sue's Typing & Word Processing. \$1.25 ds page. Term papers, resumes, essays etc. See Sue between 12-1, CAB 436 or phone 462-0466 after 5 pm.

Give your papers, theses, display materials the professional look with typesetting and graphics. Rent our Macintosh and Laserwriter Plus or let us do the work for you. Cost is comparable to wordprocessing. Sprint Lasergraphics, #32 - 10509 - 81 Ave. Phone 433-2234.

Word Processing (any typing requirement) - Donna Clark 458-5555.

Senior Typist. Will type essays, theses, etc. 80 wpm. 436-2299.

Word Processing: term papers, theses, reports, graphs. 439-7863.

The Distress/Suicide Line (AID Service of Edmonton) will be presenting 45 minute seminars to increase awareness of volunteer and community services on Wednesday March 4 at 11:00 a.m., 12:00 p.m., and 1:00 p.m. in Room 270A S.U.B.

Piano and Theory Lessons at your home. Undergraduate Music degree. Phone 433-4821.

Word Processing in APA Format by J.C. Bishop, BA. Free pick-up and delivery 436-6829.

Typing/Word Processing Rush Jobs: Reasonable Rates. #101, 10130 - 101 Street. Ph. 429-4799.

Accurate typing. \$1.25/page. Same day turnaround. Bess-Marie 434-9982.

Word Processing, Eleventh Hour Business Services, #203, 10132 - 105 Street 424-8815.

"Famine Relief Fund" Word Processing \$1.50/page. Barb: 462-8930.

Editing & Tutoring by M.A. (English). Term papers, theses, essays, reports. Typing available. 434-8975.

Personals

Pregnant and Distressed? Free, confidential help/pregnancy tests. Birthright 11 - 3 pm. M-S SUB 030K. 432-2115.

The Clansmen Rugby Club welcomes all new members. Call Dave 476-4658.

Play Double-Up, two-man circular strategy game. For free instructions write: Double-Up Club of Montreal, Box 5453, Station B, Montreal, Quebec, H3B 4P1.

Druids Rugby Club. Practices every Monday. No experience required. For information phone 467-2100 or 4200726.

J: I have no travel plans. B.

R. James B.: I have a hypothesis. Care to test? ROR or ROA? Signed: Bashful.

The Convention Centre and K. 97 presents The 6th Annual Hawaiian Hoedown!! Friday, March 6th, featuring *Ms taken Identity *the Upangy Bottoms and *20 feet. Win a trip to Hawaii! Win a weekend Houseboating! Win dinner for Two! Hottub on the dance floor! Volleyball, Limbo Contest and more bonus door prizes! Tickets at all BASS Outlets.

Desperately seeking original med's male from the land of the virgin Queen. You know where to sign. Care to explore uncharted waters? If so, our rendezvous is set, the game is launched, and it's your lead. Anxiously awaiting; Lambchop.

Dear Forever Waiting: Been looking long and hard and have finally located

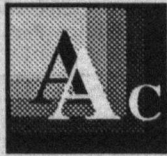
your nice smile. The rest of you is ever more delectable! The champagne and icebucket are waiting, and I do a great backstroke in my jacuzzi. Signed, The Wanton Smile.

Pen Pals Wanted. Beautiful 16 years Female Student. Ambition; Doctor. Write: Annabelle Jamile, Bidcor Mayapis Street., Bayugan, Ogusan Sur, Philippines 8102.

Lost

Lost: Micro-cassette player in Tory, Feb. 11. Needed urgently. Ph. 434-9734 (Stan).

Lost in 2nd floor chemistry girls wash-room - gold daughter's pride ring; 1 pink, 2 green stones. If found please call 454-9334.



ACCESS LASER PRINT

A Division of Access Print & Typesetting Ltd.
1826 Royal Trust Tower, Edmonton Centre
T5J 2Z2 (403) 424-5485

Macintosh LaserWriter Plus Output Service
\$1.00 per page/NO SET UP CHARGE!!
Same Day Service

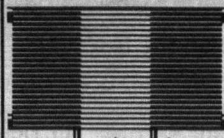
Macintosh Computer Time Rental
\$15.00 per hour

10% Discount
Upon Presentation of Student I.D.

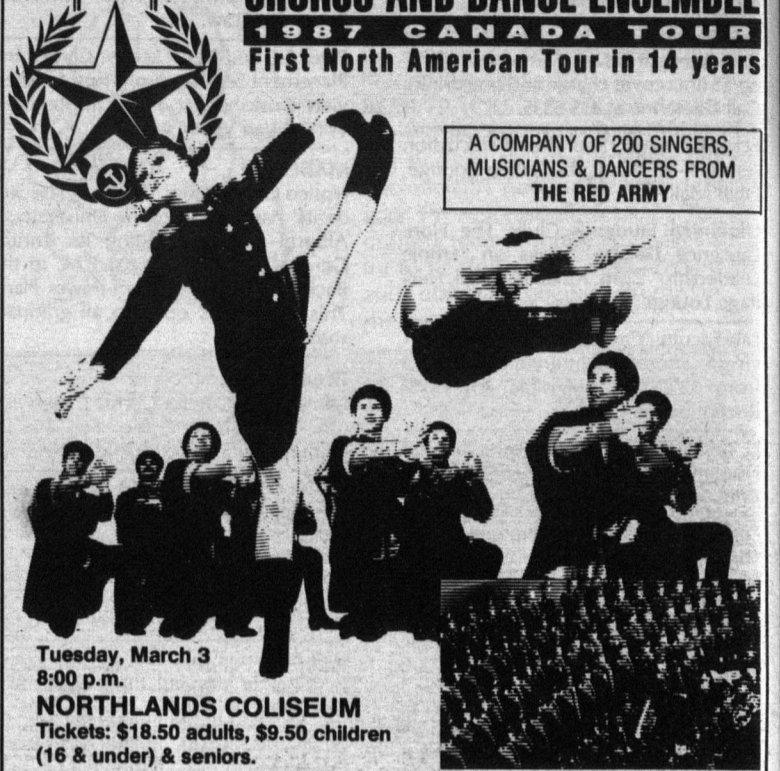
For further information call:
424-5485



AND JOHN CRIPTON & MARIO LABBÉ PRESENT



THE RED ARMY
CHORUS AND DANCE ENSEMBLE
1987 CANADA TOUR
First North American Tour in 14 years



A COMPANY OF 200 SINGERS,
MUSICIANS & DANCERS FROM
THE RED ARMY

Tuesday, March 3
8:00 p.m.
NORTHLANDS COLISEUM
Tickets: \$18.50 adults, \$9.50 children
(16 & under) & seniors.

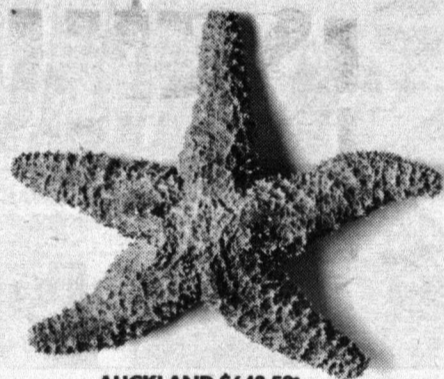
Available at all BASS outlets or call
451-8000 to charge.

ONE PERFORMANCE ONLY

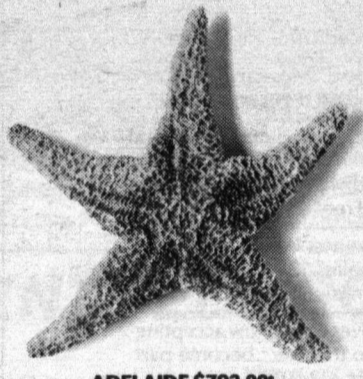
FOUR TIMES A WEEK
WE TOUR THE HOMES
OF THE STARS.



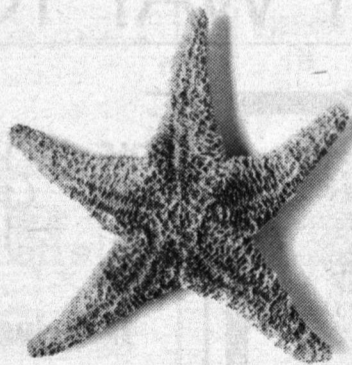
CHRISTCHURCH \$677.50*



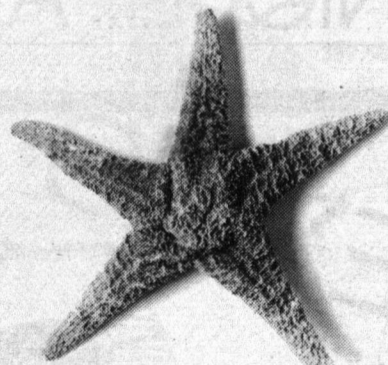
AUCKLAND \$643.50*



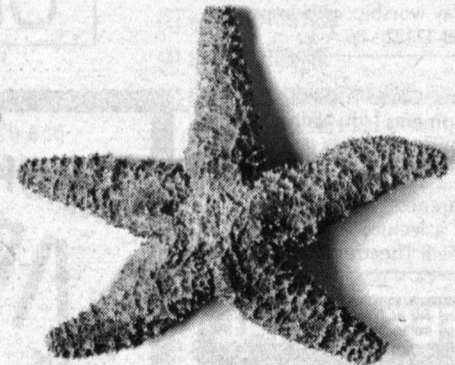
ADELAIDE \$793.00*



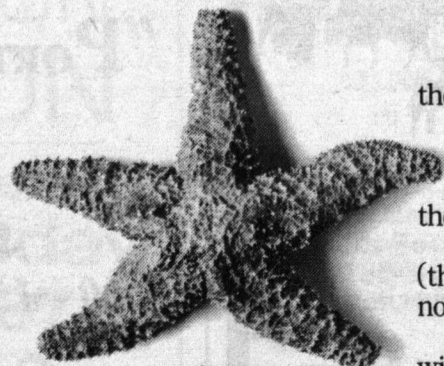
WELLINGTON \$670.50*



PERTH \$847.50*



SYDNEY/MELBOURNE/BRISBANE \$711.50*



FIJI \$538.00*

Welcome to Continental's South Pacific. Welcome to the home of the stars, skyscraping palms and sunswept beaches. Welcome to shining cities, breathtaking country and some of the warmest people you'll meet anywhere.

If you think that sounds kind of easy to handle, you're going to like the sounds of this even better.

Continental Airlines flies to paradise with up to 5 flights weekly (that's more than any other airline). And only Continental offers you its now legendary Pub in the Sky on every flight. So what are you waiting for?

Give Continental Airlines a call and tell 'em you want to hang out with the stars. 800-525-0280/800-231-0856.

CONTINENTAL AIRLINES

Proof that man was meant to fly.

141 Cities • U.S. • Mexico • Canada • South Pacific • Micronesia • Hawaii • The Far East • England

Certain advance booking requirements and restrictions apply. Fares apply for departures from April through November. Prices subject to change without notice.
*One way costs based on round trip purchase.