

Embroidery.—Some New Ideas.

Embroidered pillows are now to be had suitable for every corner, and many, indeed, are needed to furnish the home. These may be as simple or elaborate in design and finish as one chooses, but they must be suitable to the rooms they are to furnish. We have selected two of the fashionable oblong cushions which are novel and most original in design. The first is a design of Wild Carrot embroidered in greenish whites on a dull blue tinted background. The flowers are worked with coarse French Knots, using Rope Silk No. 1201 white, No. 1239½, 1239x Pale Green, and Greyish Green for the stems Royal Floss Nos. 1471, 71½, 71X outlined with Black No. 1203. This cushion is finished on the ends only with

deep twine colored fringe, which matches the color upon which the cushion is tinted.

An oblong centre has been designed to match this cushion and is exceedingly handsome. This is to be worked in the same manner, and has a border stamped for buttonholing, which can be edged with fringe or lace as preferred.

Another oblong cushion is a very attractive design in an Old English style, and has a motto suitable for a den or living room. This cushion has the lettering worked in solid, padded satin stitch, as suggested by the tinting. Blue No. 1549, Green No. 1271, and black No. 1203 Royal Floss are used for the lettering. The remainder of the design is outlined

with black, and the band effect is couched with Black and Japanese Gold Thread.

The ordinary square cushion mounts can be used to fill oblong cushions. A 22 inch size packs in very nicely, or if necessary, a little of the filling can be taken out in the event of the embroidered cushion being very narrow. These oblong cushions add very much to the furnishings of a room, as they fill odd spaces attractively.

We illustrate some of the fashionable lacing pin-cushions which are so practical, and for this reason are to be found in general use. These can be supplied stamped on white or tinted on cream linen. The first three illustrated are of the latter variety, and embroidered solidly in Royal Floss in colors shown by

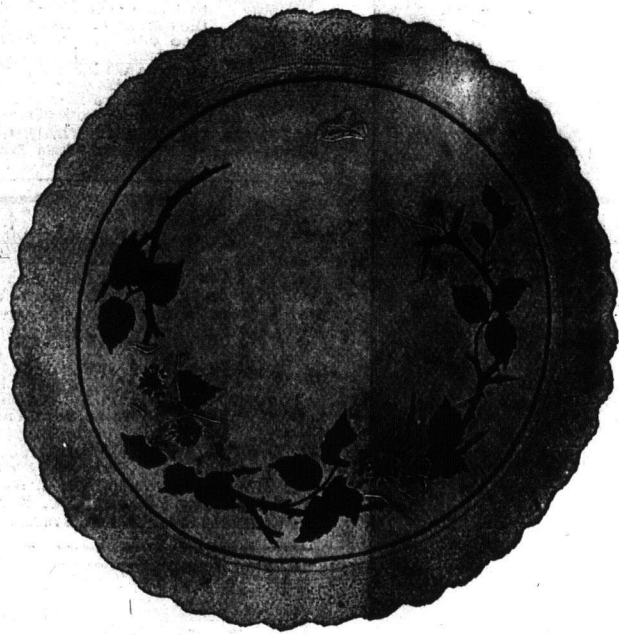
the tinting. Ribbon laced through fastens these embroidered linens into place. Oblongs, round and heart shaped forms are all attractive.

The cushion No. 1671 is stamped on white linen worked with a pretty eyelet design, and made up over a pale pink silk covered cushion, and is embroidered with Lustered Cotton. Silk to embroider any of these designs may be supplied at 5 cents per skein, and Lustered Cotton at 3 cents per skein or 30 cents per dozen.

Readers entrusting their orders to us will have them carefully and promptly filled, and further information regarding the working of any of the designs illustrated in these columns will be furnished on request.

This Centerpiece Given

—WRITE FOR IT TO-DAY—



We will send you POST PAID this 22 x 22 inch CENTER PIECE, Tinted on Tan Crash. Your choice of the following designs:

Roses, Poinsettia, Yellow Daisy, Maple Leaf or Wild Roses

with a diagram lesson showing exactly how to embroider it—if you will send us 35 cents for sufficient lace, also four skeins BELDING'S FAST COLOR ROYAL FLOSS to trim and commence embroidery on the center piece. The Lace is ECRU FILET matching center piece in color.

This Offer is Made

to convince every woman that BELDING'S SILKS are the best made. We will also send a copy of our "SUGGESTIONS FOR SHADING" giving color numbers used in embroidering all flowers.

Send at once, enclosing 35 cents, stamps or coin, and state design wanted. Address—

Belding, Paul & Co., Ltd. Dept. L., Montreal, P.Q.



The Wonderful ALADDIN Lamp

Wonderful because it produces a luxurious, soft, white light, excelled only by sunlight. Burns ordinary kerosene or coal oil, the cheapest of all illuminating fuels.

Burns Less Oil than Any Other Lamp of Equal Candle Power

Aladdin Lamps are most durable in construction—easiest to take care of—simplest in operation. The light is brighter and easier on the eyes than gas or electricity.

Oculists declare the Aladdin Gives The Best Artificial Light Known. Users declare it is not only the best light, but the best Lamp known. There is No Equal. The Aladdin is superior by test and best by comparison. It appeals to those who want superlative excellence for its own sake—appeals to those who consider economy a first essential. Odorless, noiseless, simple, safe and clean—The Ideal Lamp for the multitude.

Don't be bamboozled by an imitation. There is only one Aladdin. Insist on having it. The name is on every burner.

Investigation is the keynote of progression. Let us show you Aladdin

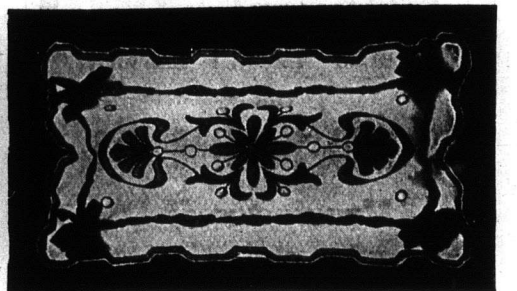
THE MANTLE LAMP CO. OF AMERICA

141 Bannatyne Ave., Winnipeg

Agents Wanted Dept. H.



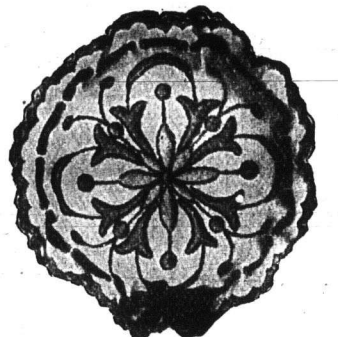
1671 Eyelet design 30 cents.



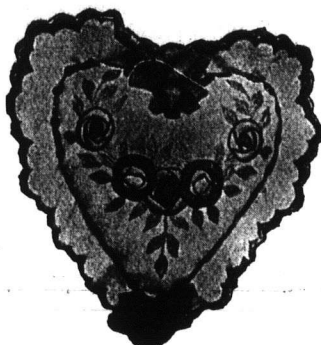
1365 Oblong Pincushion .. 40 cents.



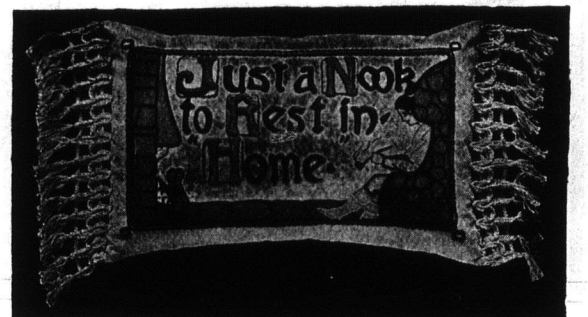
1199 Wild Carrot 60 cents.



1364½ Round ... 30 cents



1364 Heart Shape 30 cents.



1102 "Home" 50 cents.

Since She Went Home.

Since she went home—
The evening shadows linger longer here,
The winter days fill so much of the year,
And even summer winds are chill and drear,

Since she went home.

Since she went home—
The robin's note has touched a minor strain,
The old, glad songs breathe but a sad refrain,
And laughter sobs with hidden bitter pain,

Since she went home.

Since she went home—
How still the empty room her presence blessed!
Untouched the pillow that her dear head pressed!
My lonely heart hath nowhere for its rest,

Since she went home.

Since she went home—
The long, long days have crept away like years
The sunlight has been dimmed with doubts and fears,
And the dark nights have rained in lonely tears.

Since she went home.

—Robert J. Burdette.

THE LADIES' MODEL Fancy Work Manual.



This is an entirely new book, just published, and embodies all the latest ideas in needlework, crochet, knitting and embroidery. It contains designs and directions for making nearly fifty different patterns of knitted laces, many charming crochet patterns, also instructions for making many useful articles of wearing apparel and numerous articles for home decoration, among which are: ties, chair-covers, doilies, purses, table mats, shopping bags, lamp shades, shawls, afghans, toilet sets, counterpane, sofa-cushions, chair-covers, pin-cushions, dressing slippers, babies' socks, etc., etc. Full and complete instructions accompany each design, together with an explanation of the terms used in knitting and crocheting, etc. It also contains full and complete instructions in the art of embroidery, with numerous beautiful designs. The whole is illustrated by 95 handsome engravings, and the whole subject of ladies' fancy work is made so clear in this book that with it as a guide one may become an adept in the art. It is a book of 64 large double-column pages, neatly bound in attractive paper covers.

This book will be sent by mail postpaid upon receipt of only FIFTEEN CENTS

REMARKABLE OFFER—We also issue a companion book "New Designs in Knitting and Lace-making," the price of which is also 15 cents. We will send you both the above books for 25 cents.

WHOLESALE BOOK CO.
DEPT. A Winnipeg, Canada

LADIES Send for our free fashion sheet and sample cloths of our famous Mail Order \$5.50 all wool panama dresses for ladies also our \$3.50 all wool tailored suits. Best value in Canada. Standard Garment Co., London, Ont.