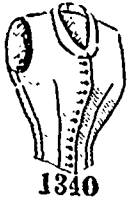


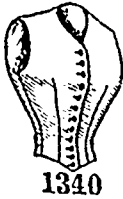
chiffon edging, the wrist frill matching. The bodice of a party gown of crystalline may be made with a sleeve of this kind.

The ruffle cap and wrist frill may be of Mechlin lace.

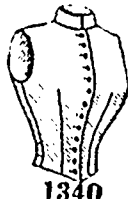
We have pattern No. 1331 in five sizes for ladies from ten to fourteen inches, arm



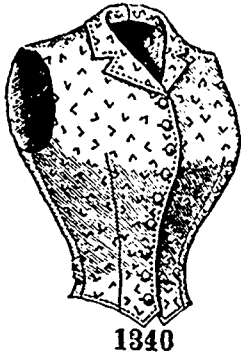
1340



1340

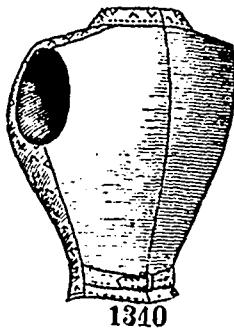


1340



1340

Front View.



1340

Back View.

LADIES' VEST (TO BE MADE WITH STANDING, NOTCHED OR SHAWL COLLAR, OR WITHOUT A COLLAR.)

(For Description see Page 638.)

measuring the arm about an inch below the bottom of the arm's-eye. For a lady whose arm measures eleven inches as described, a pair of sleeves calls for two yards and five-eighths of goods twenty-two inches wide, with two yards and an eighth of edging five inches and a fourth wide for the ruffle caps. Price of pattern, 5d. or 10 cents.

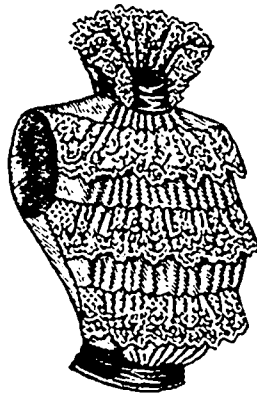
LADIES' DRESS SLEEVE
ARRANGED IN
TUCK-FOLDS AT
THE TOP.

(For Illustrations
see Page 663.)

No. 1343.—A soft variety of woollen goods was used for this novel sleeve, which is shaped with an inside seam and made perfectly close-fitting on the forearm by a seam at the outside of the arm terminated in dart style at the elbow. Above the elbow the sleeve has fulness that is gathered at the top and uniquely disposed in five downward-turning tuck-folds that spread prettily. A coat-shaped lining preserves the correct outlines, and the wrist may be plain or completed with a circular ruffle that falls over the hand.

Silk, all soft woollens and thin textures, such as organdy, mousseline de soie and lawn, will make up with pleasing effect in this sleeve and lace may fall from beneath the ruffle to give a more elaborate finish.

We have pattern No. 1343 in six sizes for ladies from ten to fifteen inches, arm measure, measuring the arm about an inch below the bottom of the arm's-eye. For a lady whose arm measures eleven inches as described, a pair of sleeves requires two yards and three-fourths of material twenty-two inches wide. Price of pattern, 5d. or 10 cents.



1342

Front View



1342

Back View.

LADIES' VEST, WITH FULL FRONT.

(For Description see Page 638.)

LADIES' DRESS SLEEVE,
WITH MUSHROOM
PUFF, THAT MAY BE DRAPED
IN BUTTERFLY EFFECT. (TO
BE MADE IN FULL LENGTH OR
IN A SHORT PUFF.)

(For Illustrations see Page 663.)

No. 1353.—The sleeve here shown made of silk, with a wrist frill of lace edging for decoration, is in coat shape and is rendered fanciful by a short puff that is gathered at its upper and lower edges. The puff may be draped in butterfly effect by a lengthwise row of gathers through its center. The sleeve may be plain or pointed at the wrist, or it may be cut off below the puff for evening wear.

All materials in vogue are appropriate for the mode, and on silks or woollens a velvet will be effective. A wrist frill is almost always added.

We have pattern No. 1353 in seven sizes for ladies from ten to sixteen inches arm measure, measuring the arm about an inch below the bottom of the arm's-eye. To make a pair of full length sleeves for a lady whose arm measures eleven inches, described needs two yards and three-fourths of goods twenty-two inches wide. A pair of short sleeves requires two yards twenty-two inches wide. Price of pattern, 5d. or 10 cents.



1341

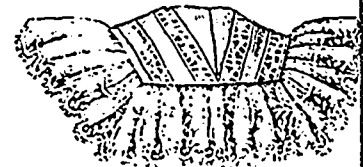
LADIES' FULL VEST—FRONT.

(For Description see Page 638.)

LADIES' FANCY DRESS SLEEVE IN MOUSQUETAIRE STYLE
(TO BE MADE IN FULL-LENGTH OR THREE-QUARTER LENGTH.)

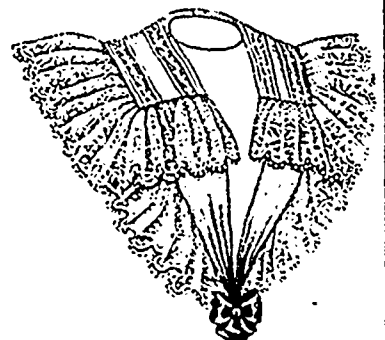
(For Illustrations see Page 663.)

No. 1344.—This sleeve, which is exceedingly pretty for she fabrics, is here pictured made of muslin and trimmed with lace edging. It is disposed in mousquetaire effect on coat-shaped lining: it has a tuck standing out in frill fashion the entire length of the sleeve at the inside of the arm.



1351

Back View.



1351

Front View.

LADIES' FICHU OR WAIST DECORATION
(KNOWN AS THE UNDINE FICHU.)

(For Description see Page 639.)

the arm and is gathered along each long edge, one long edge being finished to form a frill that extends to the top of the sleeve and is edged with lace. The sleeve may be in full-length or three-quarter length and a shaped frill of the mull edged with lace is a pretty finish for the lower edge. The fulness at the top stands out stylishly in a soft puff.

Grenadine, silk, lawn, organdy, dimity and most of the seasonable dress goods may be made up in this style with pretty effect.